
possibilities: a bigger tent

Executive Director's Report
2018 Delegates' Meeting
Middleton, Wisconsin

about me

Career nonprofit professional

Enjoying learning about you & from you

Excited about the future of US Chess



appreciation



 Saint Louis CHESS CLUB



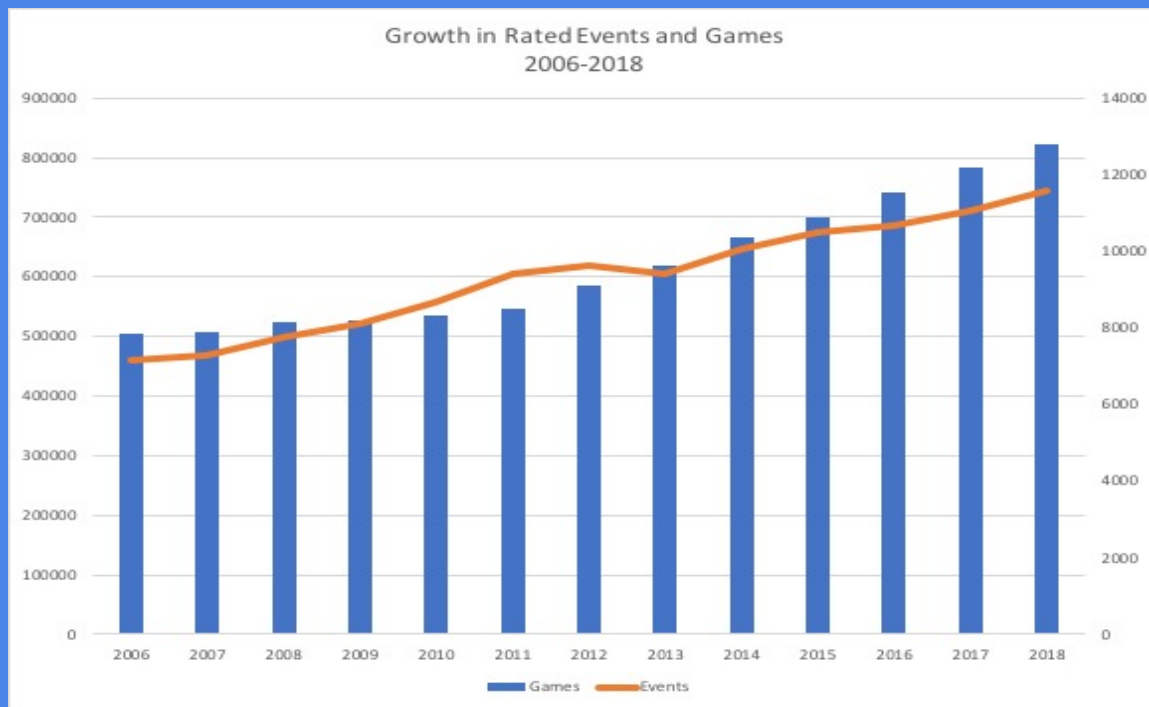
year in review - scholastics

| Event | % Growth of Scholastic Participants (2010–2018) | Female Participation as % of Whole (2010-2018) |
|----------------------|---|--|
| National Elementary | +8.5% | +42.3% |
| National Junior High | +23.7% | +88.6% |
| National High School | +13.4% | +62.4% |
| National K-12* | +34.7% | +67.5% |

*K-12 event data is for 2010-2017



year in review – events (general)



year in review: operations & programs

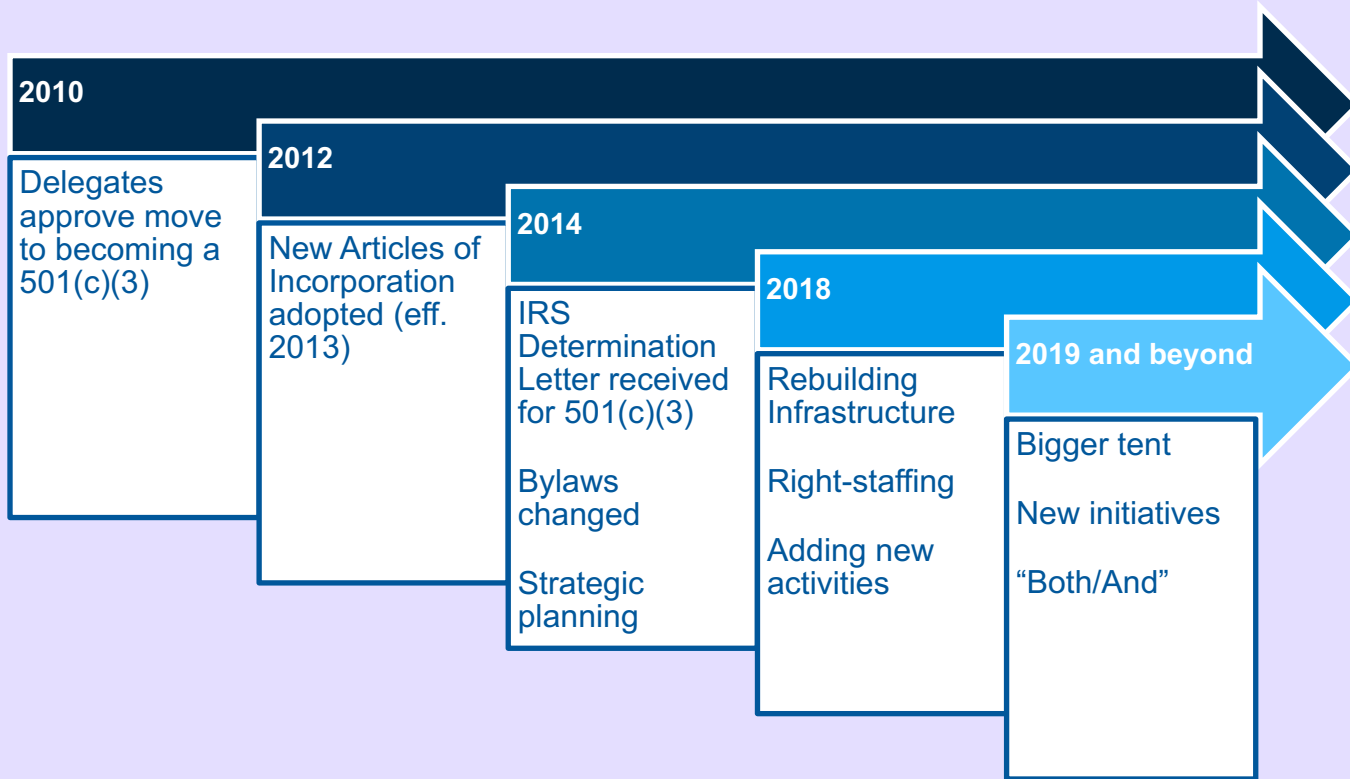


Continue efforts started by Jean Hoffman

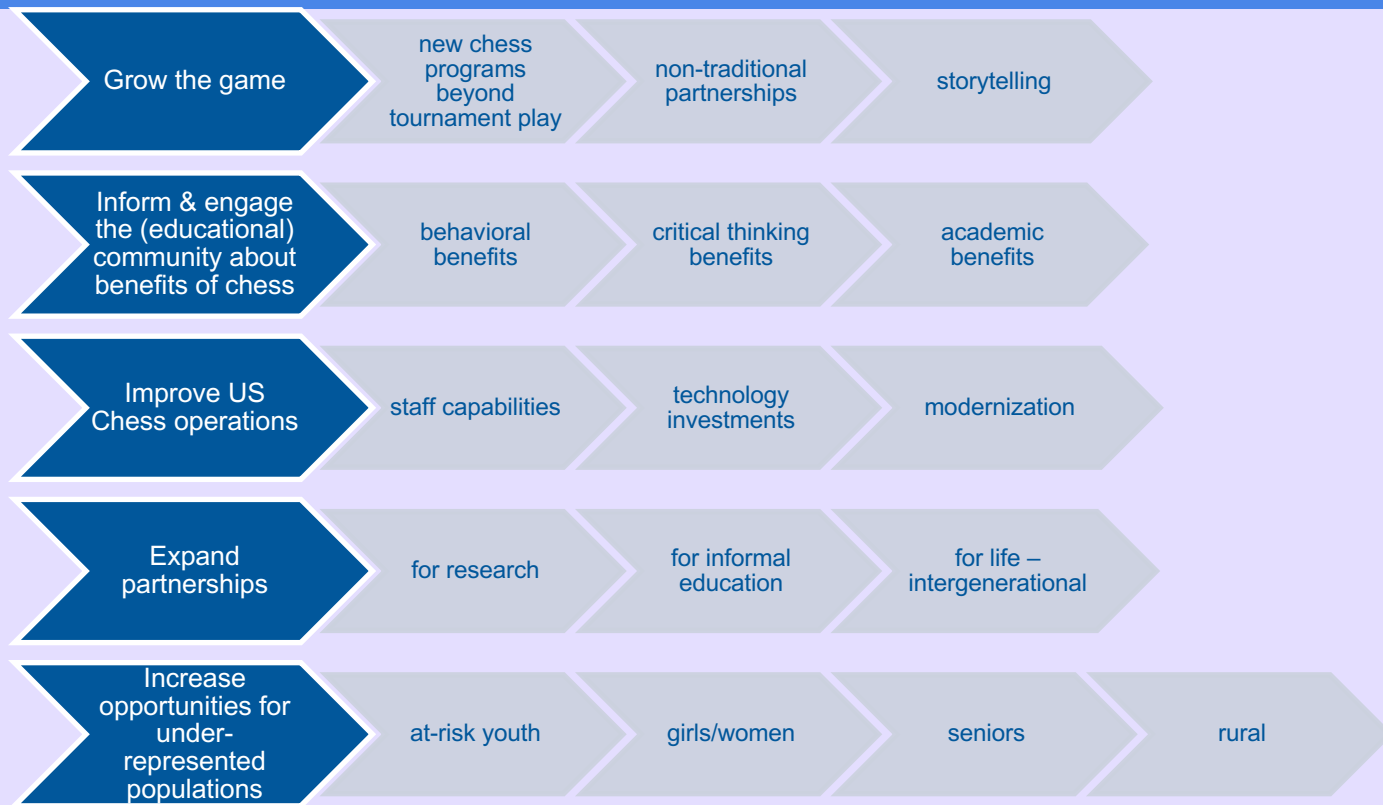
Investing in infrastructure / rebuilding a foundation

Stepping out —————> mission focused

possibilities: 501(c)(3) in progress



possibilities: translating goals into action



possibilities: obstacles

Change takes time (culture, structure, tradition)

Operations haven't fully evolved

Communication

Learning as we go



possibilities: progress

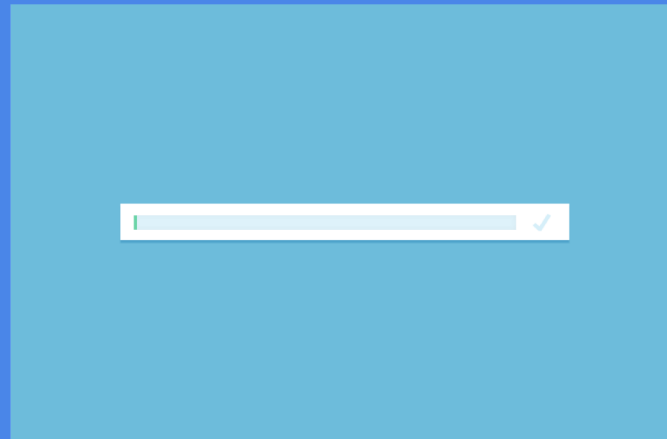
Women's Committee exemplar

Accessibility & Special
Circumstances Committee making
room in the "tent"

New successful senior
championship event

New partnerships

Chess in schools growing



possibilities: what's next

Linking new initiatives with funding

Engaging committees in initiatives

New information system

New staff

The unexpected

thank you

Questions?

Contact info:

931.787.2072 (mobile)

carol.meyer@uschess.org