



Hidden Gems

The Women's Olympiad saw tremendous tactics and sharp endings.

BY **JOHN HARTMANN**

T

HE WOMEN'S OLYMPIAD produced dozens of interesting, thrilling, and beautiful games that got relatively little attention. Here's a selection of the cream of the crop — and this only scratches the surface!

TWO KNIGHTS DEFENSE (C58)

Anahi Alexandra Munoz Cortez (1868)
IM Gulnar Mammadova (2336)
45th Women's Olympiad (1), Budapest, 09.11.2024

1. e4 e5 2. Nf3 Nc6 3. Bc4 Nf6 4. Ng5 d5 5. exd5 Na5 6. Bb5+ c6 7. dxc6 bxc6 8. Qf3

As recommended in the *Chess Life Kids* 1. e4 repertoire! Black chooses to give up an Exchange for good compensation. Will the material or the initiative win the day?

8. ... cxb5!? 9. Qxa8 Be7 10. 0-0 h6 11. Ne4 Qd7 12. Nxf6+ gxf6 13. Qe4

Getting the queen back into the game is logical, but White is burning a lot of tempi!

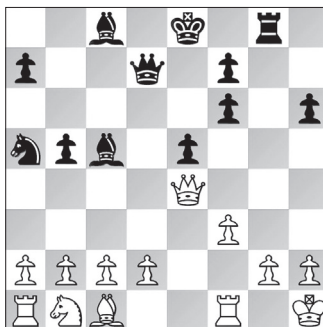
13. ... Rg8

The threat is ... Bc8-b7 followed by crashing through on g2, but White's solution only makes things worse.

14. f3?

Allowing Black to take over. 14. Qe2 leaves things entirely unclear.

14. ... Bc5+ 15. Kh1



15. ... Rxc2! 16. Qh4

16. Kxg2 loses to 16. ... Qh3+ 17. Kh1 Qxf1 mate.

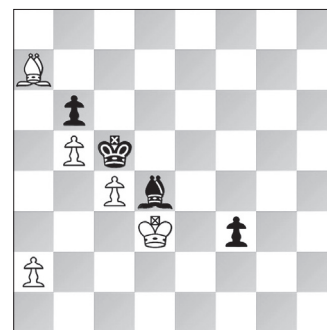
16. ... Rg4 17. Qxh6

Avoiding 17. fxc4? Qd5+. But with Black landing hammer blow after hammer blow, the result is never in doubt.

17. ... Qf5 18. d4 Bb7 19. Nd2 Bxd4 20. h3 Rg6 21. Qh4 Qxc2 22. Rb1 Bxf3+! 23. Rxf3 Qd1+ 24. Rf1 Rg1+! 25. Kh2 Qe2+ 26. Rf2 Bxf2 27. Qe4 Be3+, White resigned.

COMPARE, CONTRAST

Aleksandra Milovic (2121)
GM Bella Khotenashvili (2432)
45th Women's Olympiad (2), Budapest, 09.12.2024



WHITE TO MOVE

How can White hold this position?

50. a4?

It's clear that White can't stop the f2-pawn and also prevent the black king from eating all the pawns. Careful calculation reveals that only 50. Bb8!, preparing to bring the bishop back to attend to the f2-pawn, saves the game. Play continues 50. ... f2 51. Ke2 Kb4 52. Bg3! Kxc4 (52. ... Ka3 gives White a number of paths to safety, including 53. Bxf2 [53. Bd6+ Kxa2 54. c5! also holds; the variations are worth exploring!] 53. ... Bxf2 54. Kxf2 Kb4) 53. Bxf2 Bxf2 54. Kxf2 and Black cannot win, i.e., 54. ... Kxb5 55. Ke3 Ka4 56. Ke4 and Black can't both defend the b-pawn and win the a-pawn.

50. ... f2 51. Ke2 Kb4

51. ... Kxc4? lets White off the hook after 52. Bxb6! Bxb6 53. a5!.

52. Bb8 Bc5 53. Bg3 Kxa4 54. Bxf2 Bxf2 55. Kxf2

Now we see the difference — because White has kept the c-pawn instead of the a-pawn, the black king returns to the center to fend off the white king and shepherd her b-pawn to promotion.

55. ... Kb4 56. Ke3 Kxc4 57. Kd2 Kxb5 58. Kc3 Ka4, White resigned.

GIUOCO PIANO (C54)

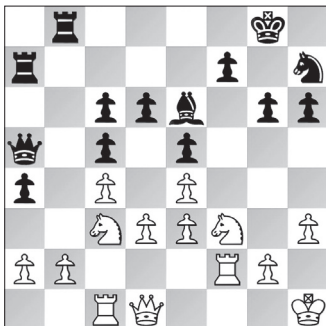
GM Alexandra Kosteniuk (2483)

GM Harika Dronavalli (2502)

45th Women's Olympiad (3), Budapest, 09.13.2024

The former Women's World Champion gets the best of her opponent in this early round matchup.

1. e4 e5 2. Nf3 Nc6 3. Bc4 Bc5 4. c3 Nf6 5. d3 d6 6. Nbd2 0-0 7. h3 a5 8. 0-0 h6 9. Re1 Be6 10. Bb5 Qb8 11. Nf1 Qa7 12. Re2 a4 13. Rc2!? Qa5 14. Bxc6 bxc6 15. Bd2 Qa6 16. c4 Qc8 17. Be3 Bxe3 18. fxe3 c5 19. Ng3 Nh7 20. Kh2 Qd8 21. Rf2 g6 22. Ne2 c6 23. Nc3 Qa5 24. Rc1 Ra7 25. Kh1 Rb8



26. d4 exd4 27. exd4 Bxc4 28. dxc5 Qxc5 29. Rd2 Ng5 30. Nd4 Qb6 31. Nxa4 Qa6? 32. b3 c5 33. Rxc4! cxd4 34. Rxd4 Qb7 35. Nc3 Rc8 36. a4 Raa8 37. Nd5 Rc5 38. Nf6+ Kg7 39. Ng4 h5 40. Rxc5! dxc5 41. Rd7 Qc6 42. Qa1+ Kh7 43. Nf6+ Kh6 44. h4 Nxe4 45. Rxf7 Nxf6 46. Qc1+, Black resigned.

CATALAN OPENING, OPEN VARIATION (E08)

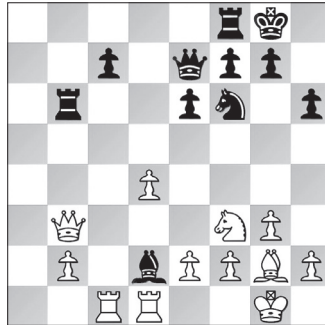
WIM Maria Jose Campos (2252)

IM Ulviyya Fataliyeva (2378)

45th Women's Olympiad (3), Budapest, 09.13.2024

The power of the Catalan bishop shines through here. The material imbalance is interesting.

1. Nf3 d5 2. c4 e6 3. g3 Nf6 4. Bg2 Be7 5. 0-0 0-0 6. d4 dxc4 7. Qc2 a6 8. a4 Bd7 9. Rd1 Bc6 10. Bg5 Nbd7 11. Nbd2 h6 12. Bxf6 Nxf6 13. Qxc4 Rc8 14. Qc2 Bb4 15. Nb3 Be4 16. Qc4 Qe7 17. Rac1 b5!? 18. axb5 axb5 19. Qxb5 Rb8 20. Qa6 Rb6 21. Qc4 Bd5 22. Qd3 Bxb3 23. Qxb3 Bd2



24. Qxb6 cxb6 25. Rxd2

It's not clear whether necessity was the mother of invention in this case, but prepared or no, White has an excellent position after giving up the queen for rook, bishop, and pawn.

25. ... b5 26. Ne5 Qb4 27. Rcc2 Qa4 28. Bf3 b4 29. Kg2 Nd5 30. Rc5 Qa1 31. Nd3 b3 32. e4 Nf6 33. Rc3 Rb8 34. d5 exd5 35. exd5 g5 36. h3 h5 37. d6 g4 38. hxg4 hxg4 39. Bc6 Kg7 40. d7 Rh8?! 41. Nc1! Qa5 42. Nxb3 Qh5 43. Kf1 Rd8 44. Nc5 Qf5 45. Rdd3 Qh7 46. b4 Qh3+ 47. Kg1 Nxd7 48. Rxd7 Re8 49. Rd1 Re2 50. Rc4 Qh5 51. Nd3 Qf5 52. Nf4 Rb2 53. Rc5 Qc8 54. Nh5+ Kh8 55. Re1 Qa6 56. Re8+ Kh7 57. Be4+ f5

58. Bxf5+ Kh6 59. Rh8+, Black resigned.

LONDON SYSTEM (D02)

IM Nurgul Salimova (2412)

WIM Umida Omonova (2032)

45th Women's Olympiad (4), Budapest, 09.14.2024

White sacrifices one pawn, then another, in an attempt to knock off her lesser-rated opponent. Black is up to the challenge, and the result is a well-played draw. Some sources give the final move as 60. ... Ke5, which would lose, but this is likely the result of the king being placed in the center of the DGT board to signify the draw.

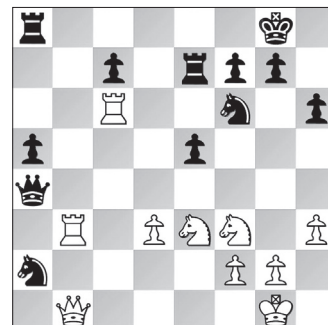
1. d4 d5 2. Nf3 Nf6 3. Bf4 c5 4. e3 Nc6 5. Nbd2 e6 6. c3 cxd4 7. exd4 Nh5 8. Be3 Bd6 9. Ne5 Nf6 10. Nd3 0-0 11. Be2 Re8 12. Qc2 Qc7 13. f4 Ne7 14. Ne5 b6 15. Bf3 Bb7 16. Bf2 Nd7 17. 0-0-0 f6 18. Nd3 Bxf4 19. Nxf4 Qxf4 20. Rde1 e5 21. Be3 Qf5 22. Qd1 Qe6 23. dxe5 fxe5 24. Bg4 Qc6 25. Nf3 Ng6 26. h4 Nf6 27. Bf5 Bc8 28. Bc2 Bg4 29. Bg5 d4 30. h5 Nxh5 31. Be4 Qc5 32. Qb3+ Be6 33. Qc2 Ng3 34. Bxg6 hxg6 35. Rxe5 Qd6 36. Rhe1 d3 37. Qd2 Qd7 38. Nd4 Bc4 39. b3 Ba6 40. Bf4 Nh5 41. Bg5 Rxe5 42. Rxe5 Qg4 43. Nf3 Rf8 44. Be7 Re8 45. Qg5 Qf4+ 46. Qxf4 Nxf4 47. Bg5 Ne6 48. Nd4 Kf7 49. Nxe6 Rxe6 50. Rxe6 Kxe6 51. g3 Kf5 52. Bf4 Bb7 53. Kd2 Ke4 54. c4 a6 55. a4 b5 56. cxb5 axb5 57. axb5 Kd5 58. Be3 Bc8 59. Kxd3 Bd7 60. b6, draw.





GM Bella
Khotenashvili

16. Ba4!? Qxb2 17. Rb1 Qxc3 18. Rxb7 Re7
19. Qb1 Nb4 20. Rc1 Qa3 21. Bb3 Nxa2 22.
Rc6! Bxb3 23. Rxb3 Qa4

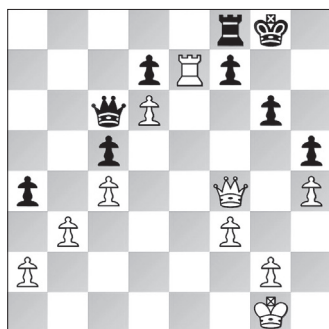


SICILIAN DEFENSE, TAIMANOV VARIATION (B45)

IM Sabrina Vega Gutierrez (2374)
IM Davaademberel Nomin-Erdene (2319)
45th Women's Olympiad (4), Budapest,
09.14.2024

What a king walk!

1. e4 c5 2. Nf3 Nc6 3. d4 cxd4 4. Nxd4 Nf6
5. Nc3 e6 6. Nxc6 bxc6 7. e5 Nd5 8. Ne4
Bb7 9. Be2 c5 10. 0-0 Qc7 11. Nd6+ Bxd6
12. exd6 Qc6 13. f3 e5 14. c4 Nf4 15. Bxf4
exf4 16. Bd3 0-0 17. Bc2 Rae8 18. Qd3 g6
19. Rfe1 Rxe1+ 20. Rxe1 Qb6 21. Qd2 Bc6
22. Be4 Rc8 23. Bxc6 Qxc6 24. Re7 Rf8 25.
h4 h5 26. b3 a5 27. Qxf4 a4



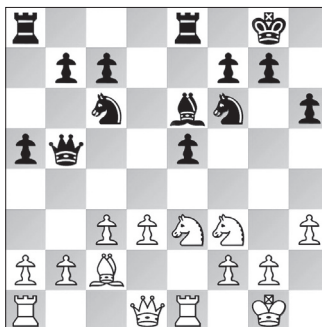
28. Kh2 axb3 29. axb3 Qb7 30. Qe3 Qc6
31. Qe5 Rb8 32. Kg3 Ra8 33. Qf6 Rf8 34.
Kf4 Kh7 35. Kg5 Qa8 36. Rxf7+ Rxf7 37.
Qxf7+ Kh8 38. Kh6, Black resigned.

GIUOCO PIANO (C54)

IM Anna M. Sargsyan (2364)
WGM Miaoyi Lu (2438)
45th Women's Olympiad (5), Budapest,
09.15.2024

Armenia's board four bronze medalist gets the better of the Chinese prodigy in an absolute slugfest. White sacrifices two pawns and then an Exchange in a furious attack.

1. e4 e5 2. Nf3 Nc6 3. Bc4 Nf6 4. d3 Bc5 5.
c3 d6 6. 0-0 0-0 7. Re1 a5 8. h3 Ba7 9. Bb3
h6 10. Nbd2 Be6 11. Bc2 Re8 12. Nf1 d5!
13. exd5 Qxd5 14. Be3 Bxe3 15. Nxe3 Qb5



24. Rxf6!?

Not strictly necessary, as 24. Nf5 Re6 25. Rb8+ (25. Nxf6+!? gxh6 26. Rxe6 fxe6 27. Nxe5 gives interesting play for the piece) 25. ... Rxb8 26. Qxb8+ Re8 27. Qxc7 Nd5 is also possible. But the Exchange sacrifice puts immense pressure on Black's position.

24. ... gxf6 25. Nf5 Ree8 26. d4! exd4? 27. N3xd4 Rad8 28. Nxf6+ Kf8

28. ... Kg7 is met by 29. Ndf5+! Kh7 (29. ... Kf8 30. Rg3; 29. ... Kh8 30. Nxf7+) 30. Rg3 Rd7 31. Nd6+! Re4 32. Qb8! and mate cannot be stopped.

29. Qh7 Re1+ 30. Kh2 Qc4 31. Nhf5 Ke8 32. Rd3!

The rook is untouchable, as it is indirectly defended by the queen.

32. ... Kd7 33. Ne6+ Kxe6

If 33. ... Qxd3 34. Nc5+ Kc6 35. Nxd3 Rxd3 36. Ne7+ Rxe7 37. Qxd3 and White wins.



GM Alexandra
Kosteniuk

34. Rxd8 Qf4+ 35. Ng3 Re5 36. Qc2 Nb4
37. Qxc7 Re4 38. Qd7+, Black resigned.

QUEEN'S PAWN GAME (A50)

WIM Zsoka Gaal (2385)

IM Deysi Cori T. (2366)

45th Women's Olympiad (6), Budapest,
09.16.2024

1. d4 e6 2. c4 b6 3. a3 Bb7 4. Nc3 Nf6 5.
d5 exd5 6. cxd5 Bd6 7. Nf3 0-0 8. Bg5 h6
9. h4! c5

Greed is indeed a sin after 9. ... hxg5 10. hxg5
Nh7 11. Qd3 with serious advantage to White.

10. Qc2 Be7 11. 0-0-0 d6 12. e3 a6 13. g4!
Nxc4 14. Bd3!? Bc8



15. Bxe7?

Trading pieces only aids Black's task. In-
stead, White could keep the pressure with
15. Bf5! Bxf5 (15. ... hxg5 16. Bh7+! Kh8 17.
hxg5; 15. ... Nxf2 16. Bxc8 Nxd1 17. Kxd1
and now the threat of Bg5xh6 looms) 16. Qxf5
Nxf2 17. Bxh6!.

Also effective is 15. Rdg1! f5 (trying to
keep the g-file blocked) 16. Ne2!, looking to
bring the e2- knight to f4 and e6 or g6. Now
if Black tries to win material with (a) 16. ...
Nxf2, White gets a terrific attack with 17.
Bxh6 Bf6 18. Nf4 Nxf1 19. Ng5. The same is
true after (b) 16. ... hxg5 17. hxg5 Bxg5 18.
Rxc4!? (18. Nxc5 Qxc5 19. Nf4 leaves White a
bit ahead) 18. ... fxg4 19. Bh7+ Kh8 20. Nxc5
Qxc5 21. Qe4!, when Black is forced to play
21. ... g6 and struggle to hold on. After 22.
Bxc6 Kg8 23. Rh5 Bf5 24. Bh7+ Kh8 25. Qh1!
Black has to give back material to survive.

15. ... Qxe7 16. Ng5?

Another piece offered on g5! OK; it's not
sound, but the aesthetics!

16. ... Ne5?

16. ... hxg5? loses to 17. Bh7+ Kh8 18. hxg5,
but if Black keeps developing with 16. ...
Nd7! it's hard to see how the attack can
succeed. If 17. Bh7+ Kh8 18. Rdg1 Ndf6 and



IM Divya Deshmukh

Black is not only surviving but thriving!

17. Bxa6! hxg5 18. hxg5 Ng6 19. Bd3?!

White should take the full point after 19.
Bxc8! Rxc8 20. Rh3!.

19. ... Qe5?

Again Black needs to get pieces out with
something like 19. ... Nd7.

20. Ne4! c4 21. f4!

Clearing the second rank with tempo.

21. ... Nxf4 22. exf4 Qxf4+ 23. Qd2 Qxd2+

24. Rxd2 f5 25. g6 fxe4 26. Rdh2, Black
resigned.

FRENCH DEFENSE, ADVANCE VARIATION (C02)

IM Divya Deshmukh (2483)

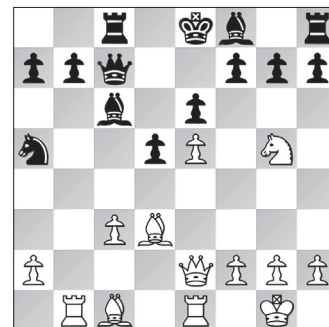
GM Elina Danielian (2393)

45th Women's Olympiad (6), Budapest,
09.16.2024

White uses a trendy line against the French
to take the initiative from the get-go. Black
is forced to vacate her king to the center
and then the queenside in the face of sig-
nificant pressure, and White's domination
of the board allows her to push her h-pawn
Winawer-style to win material and eventu-
ally the game.

1. e4 e6 2. d4 d5 3. e5 c5 4. c3 Nc6 5. Nf3

Bd7 6. Bd3 Qb6 7. 0-0 cxd4 8. Re1 Rc8 9.
Nbd2 Nge7 10. Nb3 dxc3 11. bxc3 Na5 12.
Rb1 Nxb3 13. Rxb3 Qc7 14. Qe2 Nc6 15.
Ng5 Na5 16. Rb1 Bc6



17. Nxc4! Be7 18. Qg4 g6 19. Ng5! Bxc5
20. Bxc5 Kd7 21. c4! dxc4 22. Bxc6!? Rcf8
23. Be4 Kc8 24. Bf6 Rhg8 25. Qf3 Kb8 26.
h4! Rc8 27. h5 Bxe4 28. Rxe4 c3 29. h6 c2
30. Rc1 Qd7 31. h7 Rh8 32. Bxh8 Rxh8 33.
Qg4 Qd2 34. Qg8+ Kc7 35. Ree1 Qd8 36.
Rxc2+ Nc6 37. Qxf7+ Qd7 38. Qxd7+ Kxd7
39. Rd1+ Ke7 40. Rb1, Black resigned.

RUY LOPEZ, ZAITSEV VARIATION (C92)

IM Stavroula Tsolakidou (2444)

WIM Afruza Khamdamova (2313)

45th Women's Olympiad (7), Budapest,
09.18.2024

With an opening that looks straight out of
the mid-1970s, White — who plays for the
Saint Louis University chess team — eventu-
ally takes the full point with another in-
teresting material imbalance.

1. e4 e5 2. Nf3 Nc6 3. Bb5 a6 4. Ba4 Nf6
5. 0-0 Be7 6. Re1 b5 7. Bb3 d6 8. c3 0-0 9.
h3 Bb7 10. d4 Re8 11. a3 h6 12. Ba2 Bf8
13. d5 Ne7 14. b3 c6 15. c4 Ng6 16. Nc3



30. ... Rd8 31. Ke3 Rc8 32. Qd1! Bc6
32. ... Rxc5 is met with 33. Qd6.

33. Qg4 Rg8 34. Qh5 Rg5 35. Qxf7+ Kh8
36. Qe6 Rf8 37. Qe7 Re8 38. f7, Black resigned.

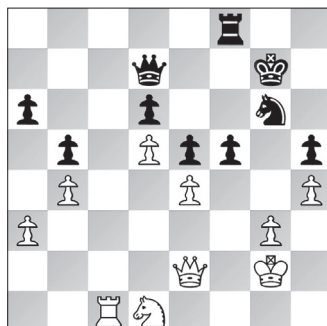
SICILIAN DEFENSE, NAJDORF VARIATION (B90)

WGM Alicja Sliwicka (2373)
WGM Alua Nurman (2324)
45th Women's Olympiad (9), Budapest, 09.20.2024

White gives up a pawn for no good reason, but Black soon hands the initiative back to her opponent. The battle rages back and forth until Black's knight returns to the fray, handing control and eventually the full point to Team Kazakhstan.

1. e4 c5 2. Nf3 d6 3. d4 cxd4 4. Nxd4 Nf6
5. Nc3 a6 6. f3 e5 7. Nb3 Be6 8. Be3 h5 9.
Qd2 Nbd7 10. Nd5 Bxd5 11. exd5 Rc8 12.
0-0-0 Nb6 13. Qa5 Qc7 14. c3 Nbd7 15.
Qb4 Be7 16. h4 b5 17. Be2 Qb7 18. Na5
Qa8 19. Qb3 Nc5 20. Bxc5 Rxc5 21. Nc6
Nxd5 22. Nxe7 Kxe7 23. Bd3 Nf6 24. Rhe1
Rd8 25. Rd2 Kf8 26. Kb1 Qc6 27. Qd1 g6
28. g4 Qc7 29. Bc2 a5 30. Rd3 Kg7 31. g5
Ng8 32. f4 exf4 33. Rf3 d5 34. Rf1 Rc4
35. Bd3 Re4 36. Qc1 Re7 37. Rxf4 Qc5 38.
Bc2 Rdd7 39. Qd2 Re5 40. Qd3 Re6 41. a3
Rde7 42. Ka2 Re4 43. Bb3 Rxf4 44. Rxf4
Rd7 45. Qh3 Qc7 46. Rd4 Ne7 47. Qf1 Nf5
48. Rd2 Qc5 49. Ka1 Rd6 50. Qh1 b4 51.
cxb4 axb4 52. a4 Nd4 53. Rd3 Nxb3+ 54.
Rxb3 Ra6 55. Qe1 Rxa4+ 56. Kb1 Qd4 57.
Rf3 Ra7 58. Qe2 Rb7 59. Rd3 Qxh4 60.
Qe5+ Kh7 61. Qxd5 Re7 62. Ka2 Qe4 63.
Qb5 Qe6+ 64. Kb1 Qf5 65. Qxf5 gxf5 66.
Rd6 Re6 67. Rd4 Rb6 68. Rd8 Kg7 69. Kc2
Re6 70. Rb8 Re4 71. Rb6 f4 72. Rh6 f3 73.
Rf6 Re3 74. Kd2 Re2+ 75. Kd1 Rxb2 76.
Rxf3 Rg2 77. Rf5 b3 78. Kc1 b2+ 79. Kb1
h4 80. Rf3 Kg6 81. Rf6+ Kxg5 82. Rxf7 h3
83. Ka2 Kg4 84. Rg7+ Kf5 85. Rf7+ Ke6 86.
Rf1 h2, White resigned.

cxd5 17. cxd5 Qa5 18. b4 Qc7 19. Bd2 Bc8
20. Rc1 Qb7 21. Bb1 Bd7 22. Bd3 Nf4 23.
Bf1 g5 24. h4 g4 25. Nh2 h5 26. g3 Ng6 27.
Be2 Rac8 28. f3 Qb6+ 29. Kg2 Qd4 30. Rf1
Bg7 31. Rc2 Rf8 32. Qc1 gxf3+ 33. Nxf3
Qb6 34. Nh2 Qc7 35. Bd3 Qb7 36. Bh6 Ng4
37. Bxg7 Kxg7 38. Nxc4 Bxc4 39. Qe3 Rc7
40. Rfc1 f6 41. Be2 Qc8 42. Qd2 Qd7 43.
Nd1 Rxc2 44. Qxc2 Bxe2 45. Qxe2 f5



46. Ne3? fxe4? 47. Qxh5! Qf7 48. Qg5 Kh7
49. Rf1? Nf4+! 50. gxf4 Rg8 51. Ng4 Rxc5
52. fxc5 Qc7

The rook and knight are equal to the queen here, especially with the potent g- and h-pawns.

53. h5 Qc2+ 54. Rf2 Qd1 55. g6+ Kg8 56. Kg3 e3?

Black has to try 56. ... Qe1 to trouble White's piece coordination; it gives Black just enough to keep the balance.

57. Rf7!

With mate threatened with Ng4-f6+/h6+, the game is soon over.

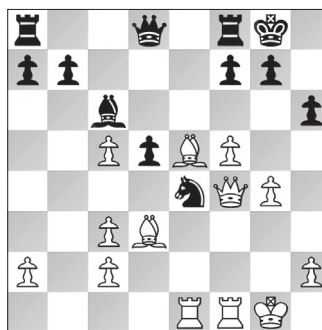
57. ... Qe1+ 58. Kg2 Qe2+ 59. Kh3 Qxc4+ 60. Kxc4, Black resigned.

FOUR KNIGHTS VARIATION (C48)

WGM Candela Be Francisco Guecamburu (2294)
WFM Anjum Noshin (2085)
45th Women's Olympiad (9), Budapest, 09.20.2024

The Argentinian number one had one of prettiest wins of the Olympiad with this ninth-round victory.

1. e4 e5 2. Nf3 Nc6 3. Nc3 Nf6 4. Bb5 Bc5
5. 0-0 0-0 6. Nxe5 Nxe5 7. d4 Bd6 8. f4
Neg4 9. e5 Bb4 10. f5 d6 11. exf6 Nxf6 12.
Bg5 Bxc3 13. bxc3 d5 14. Bd3 Qd6 15. Qf3
c6 16. Rae1 h6 17. Bf4 Qd8 18. g4 c5 19.
dxc5 Bd7 20. Be5 Bc6 21. Qf4 Ne4?



22. Bxg7! Kxg7 23. Rxe4! dxe4 24. f6+! Kh7 25. Qf5+ Kg8 26. Qh5! Qd7 27. Rf5

Even stronger was 27. Rf4!, defending the g-pawn. Black cannot stop mate.

27. ... Qxf5 28. gxf5 Kh7 29. Bc4 Be8 30. Kf2
With Black effectively in zugzwang, White takes time to bring the king to the center, preventing any rook intrusions.

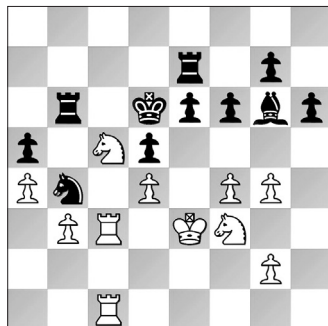
LONDON SYSTEM (D02)

IM Le Thao Nguyen Pham (2380)
WIM Zsoka Gaal (2385)
45th Women's Olympiad (10), Budapest, 09.21.2024

Black gets the better of things, but White drags the game into a tactical morass to muddy the waters. After a series of punches and counterpunches, Gaal takes the

full point for Hungary and clinches an IM norm.

1. d4 Nf6 2. Nf3 e6 3. Bf4 d5 4. e3 c5 5. c3 Bd6 6. Bb5+ Nc6 7. Bg3 Bxg3 8. hxg3 Qb6 9. a4 a6 10. dxc5 Qxc5 11. Qd4 Qxd4 12. Bxc6+ bxc6 13. exd4 a5 14. Ne5 Bd7 15. Nd2 Ke7 16. f3 Rhb8 17. b3 Ra7 18. Kf2 Be8 19. Rac1 h6 20. c4 Kd6 21. cxd5 cxd5 22. Rc3 Ng8 23. Nd3 Ne7 24. g4 Nc6 25. Ke3 f6 26. f4 Re7 27. Nf3 Bg6 28. Rhc1 Rb6 29. Nc5 Nb4



30. Ne5!?

Almost forced, else White is just much worse.

30. ... fxe5?

Letting White back into the game. Instead, the calm 30. ... Be8! keeps a serious advantage, and if White persists in offering the knight with something like 31. Rd1 (avoiding ... Nb4-a2) now 31. ... fxe5! 32. dxe5+ Kc7 33. Nxe6+ Kb7 34. Nd4 (34. Nd8+? Kb8 leaves White with no attack) 34. ... Bd7! gives Black good chances to win.

31. dxe5+ Kc7 32. Nxe6+ Kb7 33. Nd8+ Ka6 Avoiding 33. ... Kb8? 34. Rc8+ Ka7 35. R1c7+ Rxc7 36. Rxc7+ Kb8 37. Rxc7 with a tremendous position.

34. Rc8?

Too slow. White had to keep the pressure on with 34. Rc7 d4+ 35. Kd2 Rxc7 36. Rxc7 Be4 (in light of f4-f5) 37. Rxc7 Nd3 38. Rd7 and the position is unclear, especially with the time control looming!

34. ... d4+! 35. Kd2

Worse is 35. Kxd4? Rd7+ 36. Ke3 Nd5+ when Black starts grabbing pawns.

35. ... Be4 36. R1c4 Bb7

White's attack is all bluster, so it's safe to grab the pawn with 36. ... Bxg2!.

37. Nxb7 Kxb7 38. R8c5 Nc6! 39. Rb5?! g5! Undermining White's pawns. Black goes on

to win without difficulty, although I suspect she had to calculate the final moves a bit!

40. g3 gxf4 41. gxf4 Rf7 42. g5 hxg5 43. fxg5 Rxb5 44. axb5 Nxe5 45. Ra4 Rf2+ 46. Ke1 Nd3+ 47. Kd1 Nb2+ 48. Ke1 Nxa4 49. Kxf2 Nc5 50. g6 Ne6 51. Kf3 Kb6 52. Ke4 Kxb5 53. Ke5 d3!, White resigned.

PETROFF DEFENSE (C42)

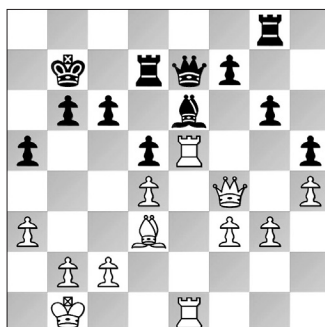
IM Divya Deshmukh (2483)

WGM Ni Shiqun (2348)

45th Women's Olympiad (10), Budapest, 09.21.2024

A key victory for India and for Deshmukh on the way to her gold medal on board three. Her technique is impressive throughout this game.

1. e4 e5 2. Nf3 Nf6 3. Nxe5 d6 4. Nf3 Nxe4 5. Nc3 Nxc3 6. dxc3 Be7 7. Bf4 Nc6 8. Qd2 Be6 9. 0-0-0 Qd7 10. h4 h6 11. Kb1 Bf6 12. Nd4 Nxd4 13. cxd4 c6 14. Be2 h5 15. Bf3 d5 16. Rde1 0-0-0 17. Re3 Be7 18. Qa5 b6 19. Rb3!? Qb7 20. Qa4 Bd6 21. Bxd6 Rxd6 22. Be2 a5 23. Qa3 Kc7 24. Re3 g6 25. Re1 Qc8 26. Re5 Rg8 27. Qg3 Qd8 28. Bd3 Kb7 29. Qf4 Rd7 30. g3 Bg4 31. f3 Be6 32. a3 Qe7



33. Rh1! Qd8 34. g4! hxg4 35. fxg4 g5 36. hxg5 Rh8 37. Rh6 Rd6 38. Rxh8 Qxh8 39. Rxe6!, Black resigned.

BREAK ON THROUGH

WGM Alua Nurman (2324)

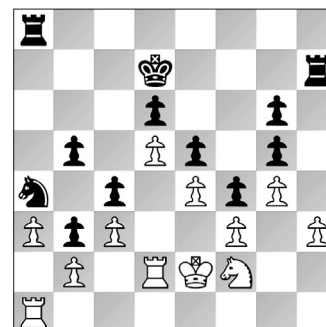
GM Bella Khotenashvili (2432)

45th Women's Olympiad (10), Budapest, 09.21.2024

(see diagram top of next column)

Khotenashvili has an excellent position in an important game for the standings, but how to break through remains to be solved.

48. ... Kc7



BLACK TO MOVE

A better idea is 48. ... b4 49. cxb4 c3 50. bxc3 b2 51. Rxb2 Nxb2 when the extra rook should defeat the pawns.

49. Rh1 Kb6

Both 49. ... Nxc3+ 50. bxc3 Rxa3 and 49. ... Nxb2 50. Rxb2 Rxa3 are promising.

50. Nd1 Kc5

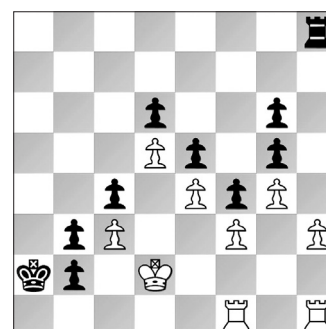
Stretching the White defenses with 50. ... Rah8 51. Nf2 Nxc3+! 52. bxc3 Ra7 53. Ra1 Rha8 also does the trick.

51. Rh2 Rha7 52. Rh1 Nxb2?

Mistimed. Now White manages to conjure a defense.

53. Nxb2 Rxa3 54. Rdd1 Ra2 55. Rb1 Rh8

56. Kd2 Ra7 57. Rh2 Ra2 58. Rhh1 b4 59. Rh2 Kb5 60. Rhh1 Ra7 61. Rh2 Rah7 62. Rbh1 Rh6 63. Nd1 Ra8 64. Nb2 Rh7 65. Rb1 Rha7 66. Rhh1 Ra2 67. Rhc1 Rh8 68. Rh1 Rh7 69. Rh2 Rxb2+ 70. Rxb2 Ka4 71. Rb1 Ka3 72. Rhh1 b2 73. Kc2 b3+ 74. Kd2 Ka2 75. Rbf1 Rh8 76. Rfg1 Rh7 77. Rf1 Rh8, draw.



The final position looks like something you might see in an endgame study! ♠

For up-to-date chess news and information, check out **Chess Life Online** at usChess.org/clo on a regular basis.