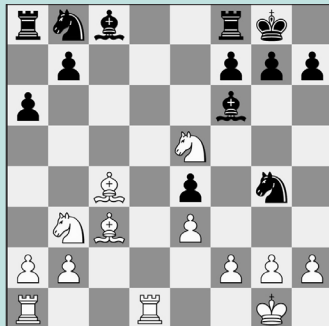


FIDE WORLD RAPID & BLITZ, PT. 2

WEDNESDAY WORKOUT ■ JANUARY 14, 2026

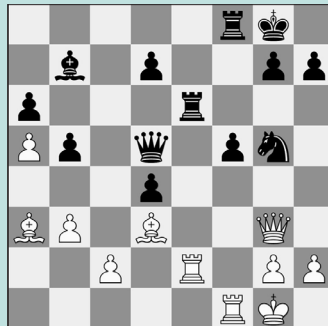
BY WGM SABINA FOISOR

PUZZLE 1.



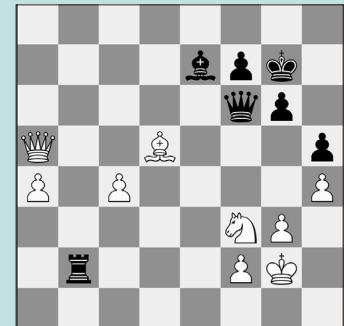
WHITE TO MOVE

PUZZLE 2.



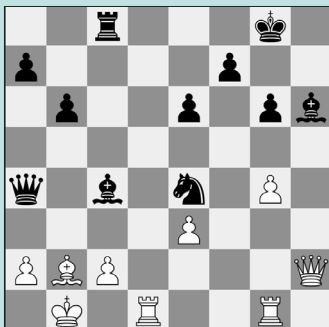
BLACK TO MOVE

PUZZLE 3.



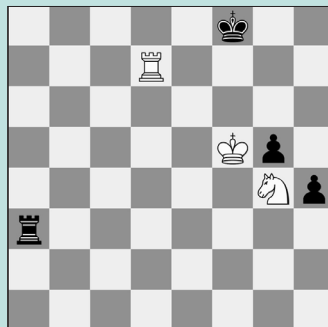
BLACK TO MOVE

PUZZLE 4.



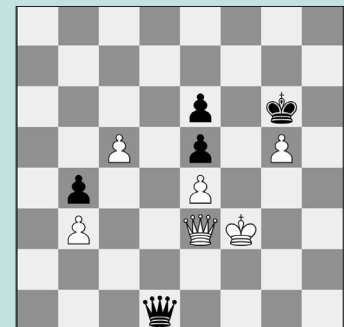
BLACK TO MOVE

PUZZLE 5.



BLACK TO MOVE

PUZZLE 6.



WHITE TO MOVE

SOLUTIONS

PUZZLE 1. 16. Nxf7! Note: 16. Nxf7 also works, but the move played in the game leads to a much more dominant position! **16. ... Rxf7** White cleans up. The game continued: 16. ... Bxc3 17. bxc3 Nc6 18. Ne5+ Kh8 19. Nxc6 with a crushing position. **17. Bxf6 gxf6 18. Rd8+ Kg7 19. Bxf7 Kxf7 20. Rxc8** Remaining up an Exchange and a pawn. (Krush – Zsoka, Doha, 2025) **PUZZLE 2. 24. ... Rxe2!** Beware attacks beginning with an equal trade! **25. Bxe2 f4 26. h4** White attempted a final idea, leaving the queen *en prise* exploiting a potential back-rank mate, but Black found a strong counter. Note: 26. Qg4 doesn't hold because of 26. ... h5 when the queen is out of squares.

26. ... Rf5! 27. Bf3 Or 27. Qh2 would have likely been met with 27. ... Qe5 followed by ... Qe5-e3 and ... Ng5-e4. **27. ... Qe6** The most active square. **28. Qf2 Nxf3+ 29. gxf3 Re5** Black is positionally crushing. (Ahmad – Robson, Doha, 2025) **PUZZLE 3. 50. ... Bd8!** Again outplaying his opponent from an equal position, Hans makes great use of “color theory.” **51. Qe1** If 51. Qa8 Qb6! is even more deadly. **51. ... Bb6 52. Qe4 Rxf2+** With ... Bb6-c7 and pressure on the newly weak g3-square to follow. (Shimanov – Niemann, Doha, 2025) **PUZZLE 4. 26. Rd8+! Rxd8 27. Qxh6 f6 28. Rh1!** Continuing the decisive attack. **28. ... Kf7 29. Qh7+ Ke8 30. Qg7** Winning. (Chanda – Aronian, Doha, 2025) **PUZZLE 5. 68. ... Rf3+!** The only draw. Instead with

68. ... h3?? 69. Nf6! Now Kf5-g6 followed by Rd7-f7 is unstoppable. **69. Ke6** If 69. Kg6 Ke8 70. Rh7 h3 and Black should hold. **69. ... Rf1 70. Nf6 Re1+ 71. Kf5 Re7 72. Rd8+ Kf7** and White can't make progress. (Niemann – Mmedyarov, Doha, 2025, analysis) **PUZZLE 6. 68. Kg3 Qc2 69. Qf2!** The b- and e-pawns are less important than the g-pawn! **69. ... Qxb3+** If 69. ... Qxe4 then 70. Qf6+ is similar to the game: 70. ... Kh7 71. g6+ Kh6 72. g7+ Kh7 73. Qh4+ winning. **70. Kh4!** Now, nothing is stopping Qf2-f6+! **70. ... Qd1 71. Qf6+ Kh7 72. Qf7+ Kh8 73. Qf8+** Or 73. g6 works too: 73. ... Qd8+ 74. Kh5 Qd1+ 75. Kg5 Qd8+ 76. Qf6+ Winning. **73. ... Kh7 74. Qh6+** Winning the e-pawn with tempo. (Dominguez – Mamedov, Doha, 2025)