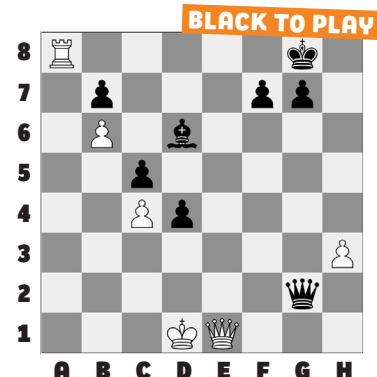


### WORLD RAPID & BLITZ, PT. 1

This week's puzzles begin our series on the **2025 FIDE World Rapid & Blitz**. Enjoy a selection of puzzles curated by WGM Sabina Foisor.

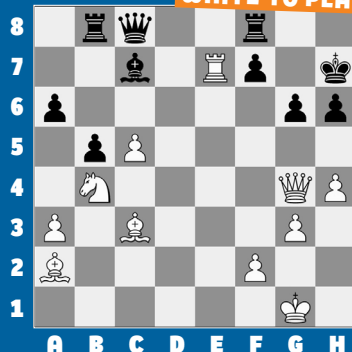
Today's **example** shows the importance of accurate defense. Here, **46. ... Bf8!** had to be played. Instead, after 46. ... Kh7?? 47. Qh4+ Kg6 48. Qg4+ White forced a queen trade into a won endgame thanks to the extra Exchange. Here, play could continue: **47. Qe2 Qg1+ 48. Kd2 Qg5+ 49. Kc2 Qg6+** when Black either has a perpetual or can advance the d-pawn with counterplay. Either way, the "passive" bishop proves itself to

be less fatal than the "active" king ended up in Robson – Isanzhulov.



# 1.

**WHITE TO PLAY**



# 2.

**WHITE TO PLAY**



# 3.

**BLACK TO PLAY**



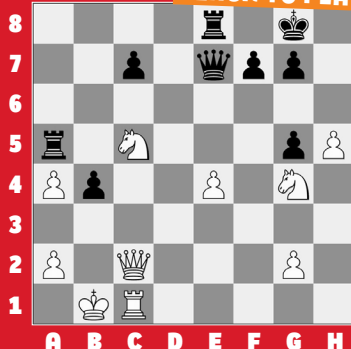
# 4.

**WHITE TO PLAY**



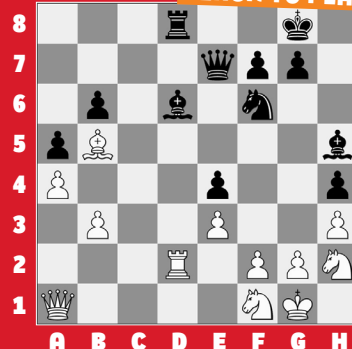
# 5.

**BLACK TO PLAY**



# 6.

**BLACK TO PLAY**



### SOLUTIONS

**1) 39. Qd4** Simple, direct, and final. The weakness on g7 can't be defended as 39. ... Rg8 allows 40. Rxf7+, so **Black resigned**. (Krush Nurgaliyeva, Doha, 2025) **2) 24. Rd7+** The double attack sets up the knight fork with Nc4xe5+ next. (Yip – Tarasenko, Doha, 2025) **3) 16. ... Nxg2+!** Removing the defender of the f3-knight, winning a key pawn as a result. **17. Nxg2 Qxf3** and Black went on to win. (Kadric

– Caruana, Doha, 2025) **4) 33. Qa5+** Starting a mating attack with a bishop sacrifice. Or 33. Bb6+ Kxb6 34. Rb3+ Kc7 35. Qa5+ wins with a similar motif. **33. ... Kxb7** Note: 33. ... Kd7 34. Qa4+ Kd8 35. Bb6+ was no safer for Black. **34. Rb3+** and **Black resigned** due to **34. ... Kc8 35. Qa6+ Kd7 36. Qc6+ Kd8 37. Rxb8** mate. (Dominguez – Cunha, Doha, 2025) **5) 33. ... Rxc5!** Removing the guard, winning two pieces and a pawn for the rook. **34. Qxc5 Qxe4+**

**35. Ka1 Qxg4** A weak king and several unprotected pieces naturally invited tactical ideas, and Levon did not fail to convert from here. (Materia – Aronian, Doha, 2025) **6) 31. ... Bxh2+** Beautiful geometry, and a rather unusual pattern! It turns out that White has too many loose pieces, so **White resigned**. **32. Kxh2** Or 32. Nxh2 Rxd2 wins even faster. **32. ... Rxd2 33. Nxd2 Qd6+** Black wins the knight and the game. (Sanal – Robson, Doha, 2025)