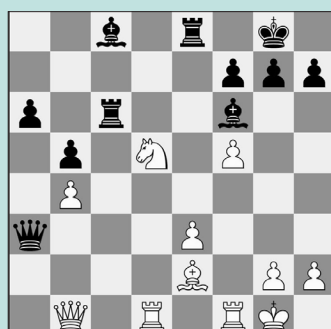


FIDE WORLD CADET CHAMPS, PT. 1

WEDNESDAY WORKOUT ■ OCTOBER 07, 2025

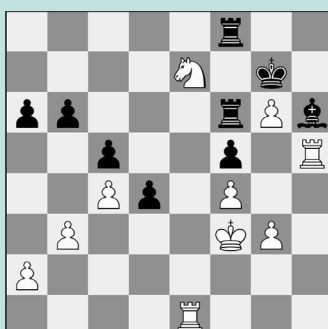
BY JJ LANG

PUZZLE 1.



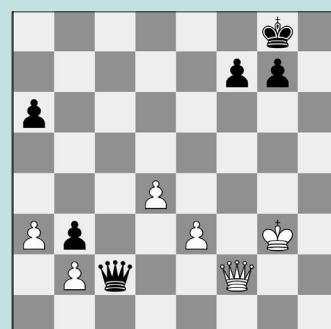
WHITE TO MOVE

PUZZLE 2.



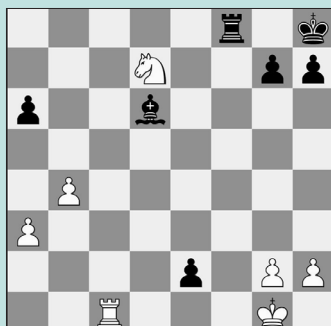
WHITE TO MOVE

PUZZLE 3.



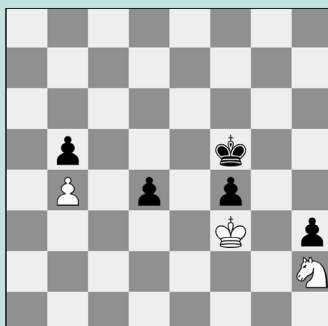
BLACK TO MOVE

PUZZLE 4.



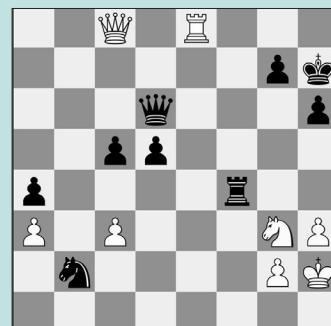
BLACK TO MOVE

PUZZLE 5.



WHITE TO MOVE

PUZZLE 6.



BLACK TO MOVE

SOLUTIONS

PUZZLE 1. 23. Rd3 The queen is trapped! 23. ... Qb2 Or 23. ... Qa4 loses similarly to the game: 24. Bd1 Qa1 25. Qxa1 Bxa1 26. Ne7+ Rxe7 24. Qxb2 Bxb2 25. Ne7+ Forking the rook and back-rank threat. (Shangin – Yerzhanuly, Almaty, 2025) **PUZZLE 2.** 36. Rxh6! Not the only winning move, but the most immediate. 36. ... Re6 If 36. ... Kxh6 then 37. Rh1+ Kg7 38. Rh7 is mate. 37. Rh7+ Kf6 38. Nd5+ Kxg6 39. Reh1 and Black resigned. (Ling – Zhaunbay, Almaty, 2025) **PUZZLE 3.** 41. ... Qxf2+ Instead, 41. ... Kf8?? 42. Qf4 Qxb2 43. Qd6+ let White escape with a draw. 42. Kxf2 f5! 43. Kf3 Kf7 44. Kf4 Kf6 The pawn endgame is winning for Black's outside passer. (Zhang – Mulay, Almaty, 2025,

analysis) **PUZZLE 4.** 30. ... Bf4 Black was too slow with 30. ... Re8 and 31. Kf2 a5 32. bxa5 Bxa3 33. Re1 Bb4 34. Rxe2 Rxe2+ 35. Kxe2 Bxa5 led to a draw. 31. Re1 Be3+ Probably, Black overlooked this *intermezzo*! 32. Kh1 Rf1+ 33. Rxf1 exf1=Q mate. (Lu – Yilanli, Almaty, 2025, analysis) **PUZZLE 5.** 58. Ng4 The right circuit! White lost with 58. Nf1?? d3! 59. Nd2 Ke5 when Black's king breaks through: 60. Nb3 h2 61. Kg2 Ke4 62. Kxh2 Ke3 63. Kg2 d2 64. Nxd2 Kxd2 65. Kf3 Kc3 66. Kxf4 Kxb4 Black is winning. 58. ... d3 What else? 59. Nf2 With both pawns *en prise*, Black's king has no time to maneuver. But whichever one pushes, White's king will chase it down. 59. ... h2 60. Kg2 d2 61. Kxh2 Ke5 62. Kg2 Kd4 63. Kf3 Kc3 64. Kxf4

Kc2 65. Ke3 d1=Q 66. Nxd1 when Black must find 66. ... Kb3 in order to draw. (Sieczkowska – Zhou, Almaty, 2025, analysis) **PUZZLE 6.** 41. ... Nc4! Remarkably, this saves the game for Black. This is an incredible bit of prophylaxis. White's attack looks deadly, but only works as a double attack on Black's king and hanging knight. Note: no other square the knight moves to would be defended, so all would lose similarly to how she lost in the game. After 41. ... Rf6?? 42. Rh8+ Kg6 White won with 43. Qg4+ Kf7 44. Qe2 forking the knight and mating square on e8. 42. Rh8+ Kg6 Without a hanging knight, White has no attack! Play could continue: 43. Qe8+ Rf7 44. Qe2 Qe5 with an equal position. (Dimassi – Zhou, Almaty, 2025, analysis)