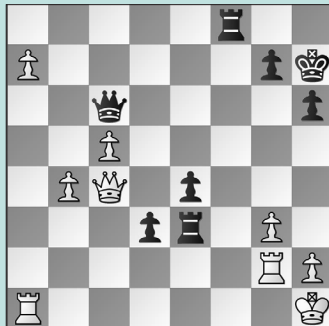


# 12TH WASHINGTON INTERNATIONAL

## WEDNESDAY WORKOUT ■ AUGUST 27, 2025

BY JJ LANG

PUZZLE 1.



BLACK TO MOVE

PUZZLE 2.



BLACK TO MOVE

PUZZLE 3.



BLACK TO MOVE

PUZZLE 4.



BLACK TO MOVE

PUZZLE 5.



BLACK TO MOVE

PUZZLE 6.



BLACK TO MOVE

### SOLUTIONS

**PUZZLE 1.** 49. ... Qf6 50. Rag1 Alternatives: 50. Qc1 Re2 wins, with ... d3-d2 to follow; 50. a8=Q Rxa8 51. Rxa8 Re1+ 52. Rg1 Qf3 mate. 50. ... Qf3 The game ended after 51. Qd5 Re2 52. a8=Q Rxa8 53. Qxa8 Rxc2 54. Rxc2 d2 when White resigned. (Cherukuri – Peddi, Rockville, 2025) **PUZZLE 2.** 14. ... Na4 15. Nd5 Alternatives: 15. Nxa4 Nxe4 wins, with ... Be6xb3 next; The motif with 15. Nxb5 axb5 16. Bxb5+ fails to 16. ... Bd7, defending the a4-knight. 15. ... Bxd5 The right capture. 16. exd5 Ne4 17. Qe2 Nxb2! 18. Kxb2 White played 18. Re1 and after 18. ... Qc3 Black was winning. 18. ... Nc3! Black regains material and keeps the initiative. (Bick – Mishra, Rockville, 2025)

**PUZZLE 3.** 19. ... Rxe3! Black fires off the thematic Exchange sac. 20. Nxe3 Qe7 Preparing ... Ra8-e8 as well. 21. Rg3 Re8 22. Qd2 a6! Applying the brake. Black had to prevent Nc3-b5. (Steingrimsón – Peddi, Rockville, 2025) **PUZZLE 4.** 47. ... Rxa7! The direct capture would simplify to a draw. While Black won later after 47. ... Rf8? 48. b4?, moves like 48. Rf2 would have given White better chances. 48. Rxa7 Re1+ 49. Rg1 d3! The key *intermezzo*, as the e4-pawn was previously pinned. 50. Qg2 Re-pinning the e4-pawn looks to hold White's position together. But... 50. ... Rxcg1+ 51. Kxcg1 Not 51. Qxcg1?? e3+ 52. Qg2 Qxcg2+ 53. Kxcg2 d2 54. Rd7 e2 when Black wins! 51. ... Qxc5+ 52. Kh1 Worse is 52. Qf2?! e3 53. Qf7 e2+ 54. Kg2 Qe5

when Black has the upper hand. 52. ... Qxa7 53. Qxe4+ Kh8 54. Qxd3 Qa1+ The game peters out. (Cherukuri – Peddi, Rockville, 2025, analysis) **PUZZLE 5.** 43. ... Nb5! Knights are tricky! After 43. ... Nd5?? 44. Rb8+ Kd7 45. Nc5+ Kd6 46. b7 Kxc5 47. Rc8+, White won. 44. Rb8+ Ke7 Or 44. ... Kd7 45. Rb7+ Ke8 46. Nc5 Nd6 also holds. 45. Rc8 If 45. Nc5 Nd6 46. b7 Rb5, then 47. Rc8 Rxb7! (and not 47. ... Nxb7?? 48. Rc7+) holds. 45. ... Nd6 46. Rc7+ Kd8 47. Rc6 Nc8 Black should be able to hold. (Putnam – Ghaem Maghami, Rockville, 2025, analysis) **PUZZLE 6.** 28. ... Qa4! 29. b3 Qa1+ 30. Kd2 Qc3+ 31. Ke2 g5! 32. Qd2 Or 32. Qxg5+ Ng6 wins. 32. ... Ng4 33. Qxg5+ Bg6 Winning. (Bick – McConnell, Rockville, 2025)