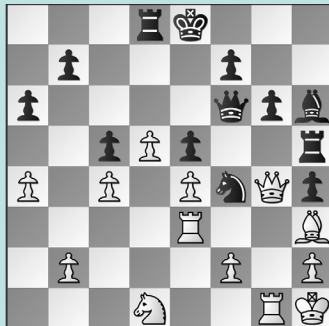


# FIDE WOMEN'S WORLD CUP, PT. 2

## WEDNESDAY WORKOUT ■ AUGUST 06, 2025

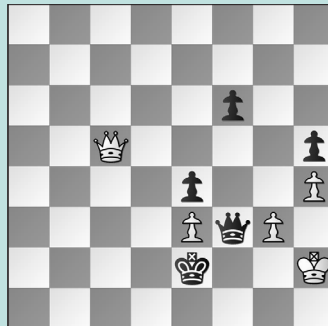
BY WGM SABINA FOISOR

PUZZLE 1.



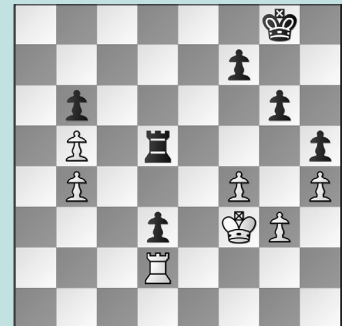
BLACK TO MOVE

PUZZLE 2.



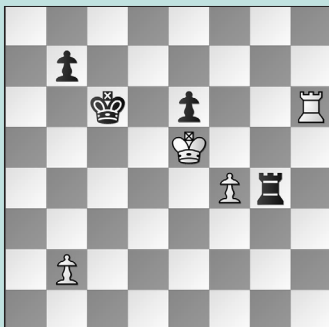
BLACK TO MOVE

PUZZLE 3.



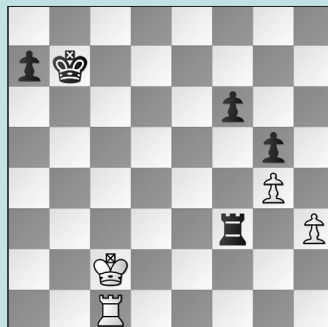
BLACK TO MOVE

PUZZLE 4.



BLACK TO MOVE

PUZZLE 5.



WHITE TO MOVE

PUZZLE 6.



BLACK TO MOVE

### SOLUTIONS

**PUZZLE 1.** 28. ... Rg5 Winning an Exchange: 29. Qf3 Rxc1+ 30. Kxg1 Nxh3+ 31. Qxh3 Bxe3 and White resigned. (Vaishali – Kamalidenova, Batumi, 2025) **PUZZLE 2.** 60. ... f5! While 60. ... Qf2+ also wins, after 61. Kh3 Qf3! is the only winning move. 61. Qc2+ Kf1 62. Qc1+ Kf2 63. Qg1+ 63. ... Ke2 Black forces a queen trade, so White resigned. (Francisco Guecamburu – Lei, Batumi, 2025) **PUZZLE 3.** 61. ... Kg7! Instead, 61. ... Rd4?? 62. Ke3 Rxb4 would have allowed White to draw with 63. f5!, although after 63. Rxd3?? Black won. 62. Ke3 Rxb5 63. Rb2 Rd5 64. Rd2 Or 64. Kd2 Kf6 is no different. 64. ... Kf6 The point of activating the king! Black wins with ... Kf6-f5-g4

after trades on d3. (Zhu – Divya, Batumi, 2025, analysis) **PUZZLE 4.** 52. ... Kc5 Instead, 52. ... Kd7?? 53. Rh7+ Kc6 54. Re7! Rg2 55. Rxe6+ Kc7 56. b4 Rb2 57. Re7+ Kc6 58. f5 Rxb4 59. f6 Rb1 60. f7 and, with Re7-e6+-f6 threatened, Black lost. 53. Rxe6 b5 54. f5 Rg2 55. f6 Rxb2 56. f7 Re2+! Not 56. ... Rf2?? 57. Rf6 winning. 57. Kf5 Rf2+ 58. Kg6 Rxf7 59. Kxf7 b4 White can't win the b-pawn. (Goryachkina – Kamalidenova, Batumi, 2025, analysis) **PUZZLE 5.** 59. Rh1! Not as passive as it looks. Instead, 59. Re1?? lost, when Black's best move was 59. ... Rxb3, although Black chose the inaccurate 59. ... Kc6 and still won. 59. ... a5 (Or 59. ... Rg3 60. Rf1 holds, as does 59. ... Kc6 60. h4 Rg3 61. h5, when Black must find

61. ... Re3! to even hold a draw.) 60. h4 gxh4 61. Rxh4 Kb6 62. Rh5 With a draw. (Charochkina – Dzagnidze, Batumi, 2025, analysis) **PUZZLE 6.** 39. ... Rxb3! The only "defense" was to kick the bishop off the diagonal. Instead, 39. ... h5?? 40. f4 would win, e.g. after 40. ... d4 41. Ne4 with a huge attack. But White played 40. Nf5?? gxf5 41. Bxe7 Qg7 42. Qxf5 when the game later drew. 40. Nf5 Or 40. Bc5 Rb8!, when there is no Nd6-c8 as the bishop in the rook's way, and 41. Ba3 Rb3 just repeats. 40. ... gxf5 41. Bxe7 Qe8 42. Rc7! The knight is stuck guarding the g5-square. 42. ... Rb6! Covering the g-file. 43. Ra7 Qb8 It won't be easy, but Black has enough counterplay to keep drawing chances. (Omonova – Lei, Batumi, 2025, analysis)