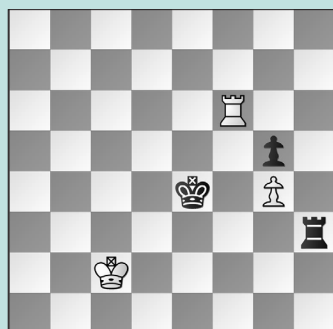


FIDE WOMEN'S WORLD CUP, PT. 1

WEDNESDAY WORKOUT ■ JULY 30, 2025

BY WGM SABINA FOISOR

PUZZLE 1.



BLACK TO MOVE

PUZZLE 2.



WHITE TO MOVE

PUZZLE 3.



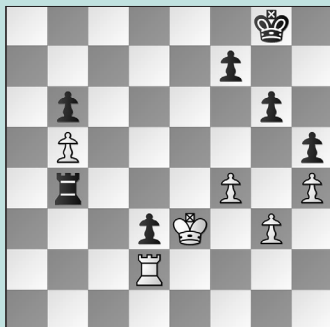
BLACK TO MOVE

PUZZLE 4.



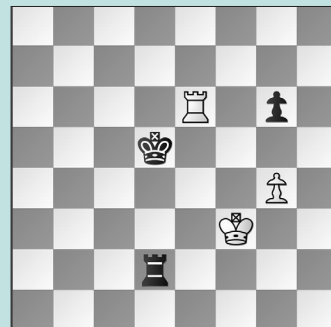
BLACK TO MOVE

PUZZLE 5.



WHITE TO MOVE

PUZZLE 6.



WHITE TO MOVE

SOLUTIONS

PUZZLE 1. 63. ... Rf3 64. Rxf3? Kxf3 65. Kd3 Kxg4 66. Ke2 Kg3 wins. **64. ... Kf4 65. Kd2 Kxg4** A theoretical win, as Black's king position is so dominant that ... g5-g4 is coming no matter what. (Charochkina – Dzagnidze, Batumi, 2025) **PUZZLE 2.** 32. Qe7! Breaking the pin while threatening the e6-pawn. 32. ... Qa3 when 33. Ndx6 Nxe6 34. Qxe6! still wins, but at least 34. Nxe6?? would be off the table as White's queen is hanging. 33. Nh5 Rg8 34. Nf6+ and Black resigned soon. (Kamalidenova – Vaishali, Batumi, 2025) **PUZZLE 3.** 55. ... Nxh3! Trading off to an endgame could have saved the match. Instead, 55. ... Rb1?? let go of first the

win and then the draw after 56. Rc1 Rxc1?? instead of 56. ... Rb2, keeping rooks on to slow the queenside pawns down, when now 57. Qxc1, after the trade of rooks, White's a and b-pawns are marching on to victory. **56. Qxg5** Not 56. Bxh3?? Rb1+ 57. Rc1 Rxc1+ with a winning X-ray. **56. ... Nxg5 57. Rc3 Rb1** Black should be winning. (Vaishali – Kamalidenova, Batumi, 2025, analysis) **PUZZLE 4.** 22. ... Qxe2! Instead, Black blundered with 22. ... Rc8?? but White blundered back with 23. Nf4?? instead of playing 23. Qxb7, and after 23. ... Bxf2+ 24. Kxf2 Rxc1 Black won. 23. Rxc5 Qe1+ 24. Kg2 Rd8! White is in zugzwang! (Canino – Shukhman, Batumi, 2025, analysis) **PUZZLE 5.** 63. f5! The immediate 63. Rxd3?? allowed 63. ... Rxb5

64. Rd6 Rb3+ when White's king had to pacify itself to defend the g3-pawn. 63. ... gxf5 Or 63. ... Rxb5 64. fxg6 fxg6 65. Rxd3 is again balanced, as 65. ... Re5+ 66. Kf4 Rf5+ 67. Ke4 keeps White active. 64. Rxd3 Rxb5 65. Kf4 Kg7 66. Kg5 White should be able to hold. (Zhu – Divya, Batumi, 2025, analysis) **PUZZLE 6.** 46. Rxc6! Black's king is cut off behind the g-pawn. Instead, 46. Re8?? Rb2?? allowed 47. Kf4 when White soon won. But after 46. ... Kc6! 47. Kf4 Kd7 48. Re4 Rd5 49. Re5 Rd6 50. Kg5 Rd4, White's rook can't reach the e6-square, so Black holds. 46. ... Ke5 47. Kg3! Rd1 48. Kh4 The underpass! 48. ... Rh1+ 49. Kg5 Rh8 50. Rh6 Rg8+ 51. Kh5 Kf4 52. Rf6+ Ke5 53. g5 and White wins. (Osmak – Wang, Batumi, 2025, analysis)