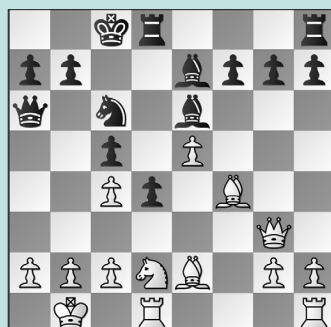


# FIDE WORLD CADETS CUP, PT. 3

## WEDNESDAY WORKOUT ■ JULY 23, 2025

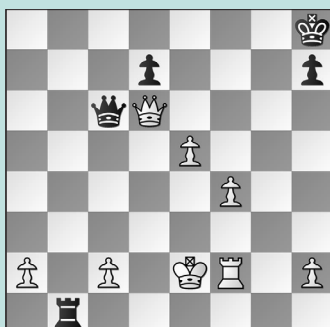
BY JJ LANG

PUZZLE 1.



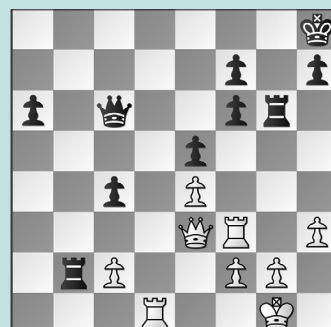
BLACK TO MOVE

PUZZLE 2.



BLACK TO MOVE

PUZZLE 3.



WHITE TO MOVE

PUZZLE 4.



WHITE TO MOVE

PUZZLE 5.



BLACK TO MOVE

PUZZLE 6.



BLACK TO MOVE

### SOLUTIONS

**PUZZLE 1.** 14. ... g5 The bishop is trapped! 15. Bg4?! The attempt to complicate things goes nowhere, but 15. Bxg5 Rdg8 16. h4 h6 still wins material. 15. ... gxf4 16. Bxe6+ fxe6 17. Qh3 Na5 Black defends the pawn and remains piece-up. (Nanava – Vellanki, Batumi, 2025) **PUZZLE 2.** 32. ... Qe4+ Winning by force! Instead, 32. ... Qxc2+?? 33. Kf3 Qc3+ 34. Kg2 Qc8 35. Kh3 saw White avoid checks and win shortly. 33. Kd2 Qe1+ 34. Kd3 Rd1+ Winning the queen. (Wang – Shamanth, Batumi, 2025, analysis) **PUZZLE 3.** 29. Rd8+ Kg7 30. Qa3! An easy follow-up to overlook! 30. ... Rb1+ 31. Kh2 Kh6 This doesn't stop mate, but nothing else did, either. 32. Qf8+ Kg5 33. Rf5+

when Black resigned. (Sawhney – Ghonghadze, Batumi, 2025) **PUZZLE 4.** 34. ... a5! A necessary defensive resource, anticipating b3-b4. After 34. ... Kf7?? 35. b4! Rb8 36. bxc5 Black's position was already lost. 35. a3 Rb8 Black breaks the pin with tempo against the now-weakened b3-pawn! This secures enough counterplay to maintain equality. (Li – Diasamidze, Batumi, 2025, analysis) **PUZZLE 5.** 24. ... d5! Responding to a kingside attack by blasting open the center, creating easier contact between Black's wayward pieces and the kingside. After 24. ... Bxe4?? 25. Nxe4 Rad8 26. Qd5 Rd7??, Black went from still-equal to losing due to 27. Rxb2 Qxb2 28. Nf6+, going on to win. 25. cxd5 hxg5! Now, we can see why the

... d6-d5 move gives Black enough defensive resources to take the material and run. 26. Rxf5 gxf5 27. Nxf5 Qd6! With ... Qd6-g6 coming, Black is simply up a rook. (Tsulaia – Sawhney, Batumi, 2025, analysis) **PUZZLE 6.** 24. ... Bg6 The only defense. Instead, 24. ... g6?? ran into 25. Bd3! defending the c2-pawn and preparing Qf2-h4., when 25. ... Qe7 allowed 26. Qh4 and after 26. ... f6 27. Ne6 Bxe6? 28. Bxg6, White went on to win. 25. Bd3 f5 Creating counterplay and keeping the bishop on the board. Note: 25. ... Qe7 26. Qh4 f5 is another defense. 26. Ne6 Qa7! 27. Qxa7 Rxa7 28. Nxf8 Kxf8 29. Rhf1 Rf7 30. Bxb5 f4 31. Bxa4 e4 Black is down an Exchange and two pawns, but has full compensation. (Bulgak – Guo, Batumi, 2025, analysis)