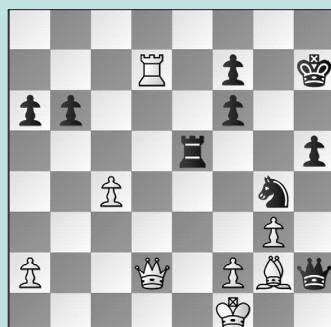


FIDE WORLD CADETS CUP, PT. 2

WEDNESDAY WORKOUT ■ JULY 16, 2025

BY JJ LANG

PUZZLE 1.



BLACK TO MOVE

PUZZLE 2.



WHITE TO MOVE

PUZZLE 3.



BLACK TO MOVE

PUZZLE 4.



BLACK TO MOVE

PUZZLE 5.



BLACK TO MOVE

PUZZLE 6.



BLACK TO MOVE

SOLUTIONS

PUZZLE 1. 37. ... Ne3+! Black wins by force: 38. fxe3 Rf5+! 39. Ke1 Qg1+ 40. Ke2 Rf2+ Winning the queen. (Sugraliyev – Ayyappan, Batumi, 2025) **PUZZLE 2.** 12. e4! Nxe4 13. c4 Or 13. Bc4 works as well. 13. ... Qf5 14. Nh4 The right square. Or 14. Bd3 also works, with a different move order behind the same idea. Instead, 14. Ne5?? was an error, rebuked by 14. ... Bxe5! 15. Rxf5 Bxd4+ 16. Kh2 exf5 when Black escaped with enough material for the queen! 14. ... Qg5 15. Nxe4 Note the d6-bishop hangs. 15. ... Qe3+ 16. Nf2 And White is piece-up! (Muthukumar – Samanta, Batumi, 2025, analysis) **PUZZLE 3.** 35. ... Rxd6!! A miracle escape for Black, who remains a bit worse but

very much in the game. Instead, 35. ... Bxd6 lost swiftly: 36. Rxd6 Rc7 37. Qh3 h5 38. Qe6+ and White went on to win. 36. Qxb7 Nc5 37. Rxd6 Note: 37. Qf3? Nxd3 is better for Black. 37. ... Nxb7 38. Rxd8+ Nxd8 And White has two pawns and a rook for two minor pieces, giving Black some practical chances. (Ling – Gusev, Batumi, 2025, analysis) **PUZZLE 4.** 33. ... Rxf3! Black was too slow with 33. ... R8f7?? 34. fxe4 Qg5?! 35. Kh2! when Black had no attack. 34. Qe2 Or 34. gxf3 Rxf3 35. Qd2 Rg3+! wins. 34. ... Rf2 Threats on the g2-square force White to give up the queen. 35. Qxf2 Rxf2 36. Kxf2 Bc8 The passed e-pawn gives Black an advantage. (Yan – Shurgulaia, Batumi, 2025, analysis) **PUZZLE 5.** 41. ... Nxf3+ After 41. ... bxc5??

42. Nxc5 Kd5 43. Nd3, White held the draw with ease. 42. Kd3 Kd5! Threatening ... Nf3-e5+ to remove the defender of the e4-knight. 43. Nf6+ Or 43. cxb6 Ne5+ 44. Kc3 Kxe4 45. b7 Nd7 46. a5 Nb8 sees the knight tame the pawns. 43. ... Kxc5 Winning. (Petriashvili – Yan, Batumi, 2025, analysis) **PUZZLE 6.** 52. ... Kc7! Black would have conceded an equalizer with 52. ... Ke7?? 53. Rd3 Qa2 54. Rd1 h3 55. hgx3 fxg3 56. Rxe3 Qxb2 57. Bc2+, preparing to deliver a perpetual. 53. Rd3 The game continued with 53. Re1, and after 53. ... h3! 54. hgx3 fxg3 55. Rdd1 Bf2 and Black won. 53. ... Qa2 54. Rd1 h3! 55. hgx3! fxg3 56. Rxe3 Qxb2 White lacks the Be4-c2+ resource to stave off mate, and can just resign now. (Li – Gartenlaub, Batumi, 2025)