

FIDE WORLD CADETS CUP, PT. 1

WEDNESDAY WORKOUT ■ JULY 09, 2025

BY JJ LANG

PUZZLE 1.



BLACK TO MOVE

PUZZLE 2.



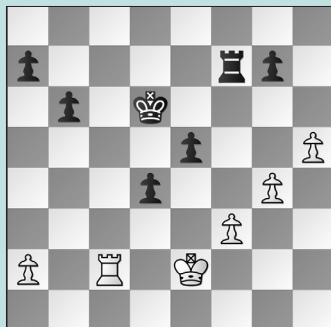
BLACK TO MOVE

PUZZLE 3.



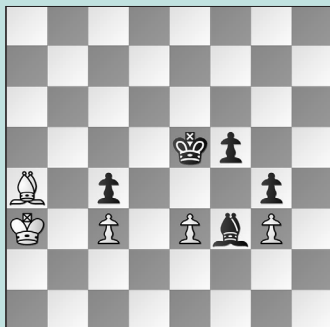
WHITE TO MOVE

PUZZLE 4.



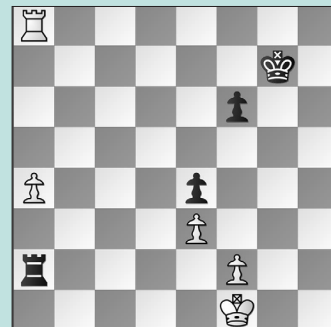
BLACK TO MOVE

PUZZLE 5.



WHITE TO MOVE

PUZZLE 6.



BLACK TO MOVE

SOLUTIONS

PUZZLE 1. 32. ... Bh3+ 33. Kh1 Qf5! Preparing ... Qf5-f3+ without allowing Ne4-f6+. 34. Re3 While 34. f4 looks scary, 34. ... Nf3 35. Nf6+ Kh8! leaves White without double checks, so Black wins. 34. ... Bg4! 35. f4 Bxd1 36. Qxd1 Not 36. fxe5?? Qf1 mate. 36. ... Nd3 Winning. (Somarju – Guo, Batumi, 2025) **PUZZLE 2.** 33. ... Bxg2+! Black went for the patient 33. ... Rf8? with some advantage. 34. Kxg2 Qg4+ 35. Kh1 Or 35. Kf1 Rf8 mate. 35. ... Qf3+ 36. Kg1 Re5! Mate is inevitable, as 37. h4 allows either 37. ... Qf2+ or 37. ... Qg3+. (Ioseliani – Paragiri, Batumi, 2025, analysis) **PUZZLE 3.** 27. Qc3! The right square. White chose 27. Qc1?? when both players missed 27. ... Bg7!,

since 28. Qxc6 does not win material, while 28. Nd2 Bh6! keeps material even as 29. f4 Qb6+ breaking the pin with tempo; While 27. Nxf6+! Kh8 looks strong, only 28. Qb1! wins, and it is not trivial to prove it. 27. ... Bg7 28. Nd2! Winning. (Sugraliyev – Gartenlaub, Batumi, 2025, analysis) **PUZZLE 4.** 38. ... d3+ Shedding a protected passer! Instead, 38. ... Kd5?? allowed 39. Rc8 Re7 40. Rd8+ Kc4 41. Rc8+ Kb4 when 42. g5! would create enough counterplay. 39. Kxd3 Rxf3+ 40. Ke2 Rf4 Winning the g-pawn removes counterplay. (Grace Wang – Yi Xuan Wang, Batumi, 2025, analysis) **PUZZLE 5.** 89. Kb4! After 89. Bc2?? Be4! Black would have won: 90. Ba4 Kd5 91. Kb2 Bd3! and White is unable to keep Black's king out. Instead,

89. ... Be2?? 90. Kb2 Bd3 91. Bxd3 cxd3 92. Kc1 Kd5 93. Kd1! was a draw. 89. ... Be2 90. Bc6! Cutting off Black's king. 90. ... Bd3 91. Bb7 Be4 92. Bc8! Bd5 93. Kc5 Black's bishop can't move, so White holds. (Dyachkov – Jacob Wang, Batumi, 2025, analysis) **PUZZLE 6.** 42. ... Kg6! The passive 42. ... Kf7?? allowed 43. a5 Ra4 44. a6 Kg7 45. a7 f5 when White soon won the center pawns. 43. a5 Kf5 44. Kg2 Rc2 Not 44. ... Kg4?? 45. a6 Kf5 46. a7 Ra1 47. f3! luring Black's king off the f-file. 45. Kg3 Rc1 Remaining off the a-file. 46. a6 Rc3! Anticipating f2-f3! 47. Kh2 Rd3 48. a7 Rd7 Preparing to meet Kh2-g3 with ... Rd7-g7+, so f2-f3 and e3-e4+ will concede the shielded f4-square to Black's king. (Qiu – Grace Wang, Batumi, 2025, analysis)