

# 2025 US CADET CHAMPIONSHIP

## WEDNESDAY WORKOUT ■ JULY 02, 2025

BY JJ LANG

PUZZLE 1.



WHITE TO MOVE

PUZZLE 2.



BLACK TO MOVE

PUZZLE 3.



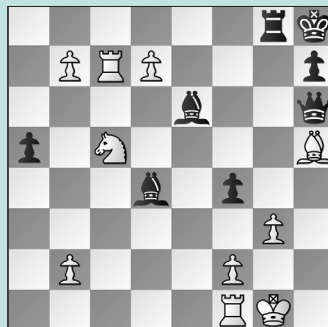
BLACK TO MOVE

PUZZLE 4.



BLACK TO MOVE

PUZZLE 5.



WHITE TO MOVE

PUZZLE 6.



WHITE TO MOVE

### SOLUTIONS

**PUZZLE 1.** 65. **Bxf7! Rb1** If 65. ... Nxf6+ it would be easy to stop here because the rook hangs, but 66. Kxf4 escapes check, defends the rook, leaves the f6-knight *en prise*, and threatens Re5-e6+ to trade rooks and promote the outside passer. 66. **Re4 Nxf6+** Anything else loses material. 67. **gxf6** White wins. (Lin – Deng, Schaumburg, 2025) **PUZZLE 2.** 6. ... **f5** The fork clearly gets broken with tempo. But that doesn't matter! Black chose 6. ... **g6** and won the hard way. 7. **Qxg7 Qd4!** Defending the rook via an X-ray. 8. **Qxd4 cxd4** Spectacularly, the knight is trapped. (Rao – Deng, Schaumburg, 2025, analysis) **PUZZLE 3.** 33. ... **Bxg4+** 34. **Kxg4** Or 34. Kh4 Qd8+ 35. Kxg4 Rxe4+!

wins similarly, with ... Qd8-g5 mate next. 34. ... **Qd7+** Or 34. ... Rxe4+ transposes, and 34. ... Qc8+ is equivalent. 35. **Kh4 Rxe4+!** The key move. 36. **dxe4 Bf6+** 37. **Kh5 Qh3+** 38. **Kg6 Rg7** mate. Or 38. ... Ne7 mate. (Deng – Adewumi, Schaumburg, 2025) **PUZZLE 4.** 31. ... **Bxe1!** The rook looked poisoned, but it wasn't! After 31. ... **Nc2** 32. **Re5 Nd6** 33. **Qg4**, White went on to win. 32. **Rxe1 Nc2** 33. **Rc1** Probably, Black stopped calculating here, thinking White was better. 33. ... **Nd6!** The f7-square is defended with tempo, and Black is level after capturing the a1-bishop next. (Adewumi – Colville, Schaumburg, 2025) **PUZZLE 5.** 41. **Rc8** Preventing ... Rg8xg3+. 41. ... **Qg5** Now, 41. ... fxxg3 is too slow: 42. Rxxg8+ Bxxg8 43. d8=Q

gxf2+ 44. Rxf2! and White retains a material plus. 42. **Rxxg8+** Or 42. Ne4 defending the g3-pawn with tempo on the queen. 42. ... **Bxxg8** 43. **Ne4!** The only winning move. After 43. b8=Q?? **Qxxg3+** 44. **Kh1 Qh3+** 45. **Kg1 Qg3+** 46. **Kh1**, Black had the draw by repetition. 43. ... **Qd8** 44. **Rc1** Winning. (Lin – Adewumi, Schaumburg, 2025, analysis) **PUZZLE 6.** 39. **Bf7!** The game continued with 39. **d7? Rxc5** 40. **Nxc5 Bd4??** reaching the previous puzzle. 39. ... **Rxc5** If 39. ... Rxf7 then 40. Rxf7 Bxf7 41. d7 wins. 40. **Bxxg8** The b-pawn is unstoppable. 40. ... **Bxxg8** 41. **Rxc5!** Removing threats of ... Re5-g5. Careful: 41. b8=Q? fxxg3! 42. Nxxg3 Rg5 manages to draw. 41. ... **fxg3** 42. **Nxxg3 Qxxd6** 43. **Rc8** Winning. (Lin – Adewumi, Schaumburg, 2025, analysis)