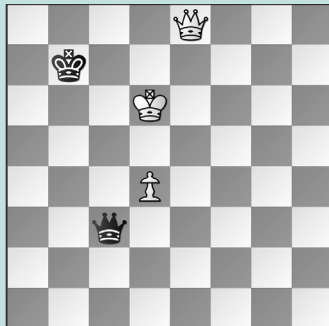


# CHICAGO OPEN HIGHLIGHTS

## WEDNESDAY WORKOUT ■ JUNE 04, 2025

BY JJ LANG

PUZZLE 1.



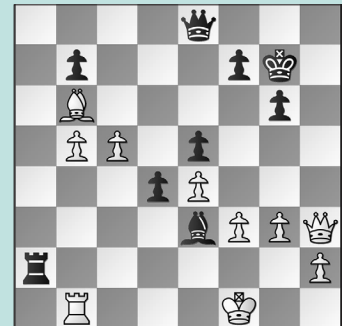
WHITE TO MOVE

PUZZLE 2.



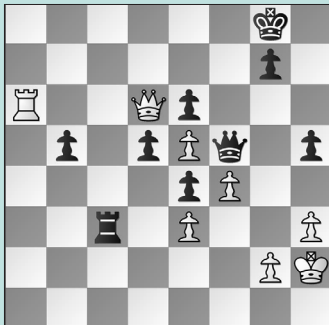
WHITE TO MOVE

PUZZLE 3.



BLACK TO MOVE

PUZZLE 4.



WHITE TO MOVE

PUZZLE 5.



WHITE TO MOVE

PUZZLE 6.



BLACK TO MOVE

### SOLUTIONS

**PUZZLE 1.** 73. Qb5+ White forces a trade into a won pawn endgame, so **Black resigned**. 73. ... Ka7 If 73. ... Kc8 74. Qc6+ or 74. Qc5+ win. Likewise, 73. ... Ka8 74. Qc6+ Qxc6+ 75. Kxc6 Kb8 76. Kd7 wins. 74. Qc5+ Qxc5+ 75. dxc5 Or 75. Kxc5 works. 75. ... Kb8 76. Kd7 Winning. (Narayanan – Ochirbat, Chicago, 2025) **PUZZLE 2.** 26. Rxc6+ A modified Boden's mate! 26. ... bxc6 Or 26. ... Bxc6 27. Qc7 mate. 27. Ba6+ Kb8 28. Qd6+ Ka8 29. Nc7+ Kb8 30. Nb5+ and **Black resigned** in light of: 30. ... Ka8 31. Bb7+ Kxb7 32. Qc7+ Ka6 33. Qxa7 mate. (Titus – Petesch, Chicago, 2025) **PUZZLE 3.** 44. ... Ra1! Not the only winning move, but the most direct. 45. Rxa1 Qxb5+ 46. Ke1 Qb4+ 47. Kf1

Qb2 and **White resigned**. (Narayanan – Corrales, Chicago, 2025) **PUZZLE 4.** 32. Ra8+ White begins the king hunt! 32. ... Kh7 Or 32. ... Kf7 33. Rf8+ wins the queen. 33. Rf8! A powerful move. Black's queen is almost trapped, but its only safe square takes away the king's only escape route! 33. ... Qxf8 Black did not even bother with 33. ... Qg6 34. Qd8 when the only safe queen move is 34. ... Qh6 and 35. Rh8+ still wins the queen! 34. Qxf8 Rxe3 35. f5 and **Black resigned**. (Kiewra – Sheehan, Chicago, 2025) **PUZZLE 5.** 37. c5+! Kc7 If 37. ... Rxc5, Black can save the rook after 38. Nf7+ Kc6 39. Rxe6+ Kb5 (or 39. ... Kd7 40. Rd6+ Ke7 41. Kxc5 wins) 40. Rxf6 but still ends up knight-down. 38. Nc4! White wins the e6-pawn. 38. ... Ra2

Or 38. ... Ra6 39. Nb6 still grabs the pawn. 39. Rxe6 With tempo on the knight, White has time to defend the g-pawn next and went on to win. (Titus – Shaikh, Chicago, 2025) **PUZZLE 6.** 42. ... f6! Black lost after 42. ... f5?? 43. Rh8+ Kf7 44. R4h7+ Kg6 45. Rh6+ when White's attack is unstoppable: 45. ... Kg5 (Or 45. ... Kf7 46. Rf6+ wins.) 46. Bf6+ and White went on to win. 43. Rh8+ A better try is 43. Rxf6 Ng7 44. Rfh6 Rc7 when White is better but Black has counterplay. Note: 43. Bxf6?! Rh7! gives Black drawing chances in the minor piece endgame. 43. ... Kf7 44. R4h7+ Ng7! The key difference with the pawn on f6! Not 44. ... Kg6?? 45. Rh6+ when wins. But now Black's king is safe! (Schmamel – Corrales, Chicago, 2025, analysis)