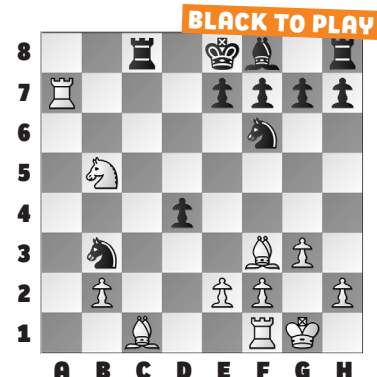


SUPERNATIONALS VIII, PART 3

This week's exercises continue our series on **SuperNationals VIII**, highlighting several of our Champions and Co-Champions.

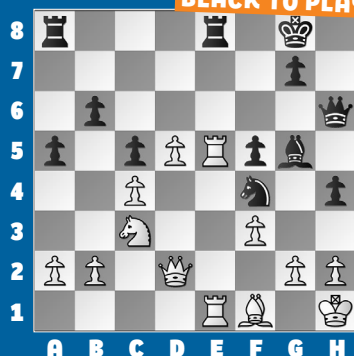
In our **example**, the K-5 Co-Champion had his last-round opponent's king on the ropes. She erred with **17. ... Nxc1??** rather than developing. Black had to play 17. ... e5! with the intention of developing quickly. Play could continue: 18. Bg5 Bc5 19. Ra6 0-0 with a level game. But now, **18. Nxd4!!** cuts off Black's knight and prepares Bf3-c6+. After **18. ... e5 19. Bc6+ Kd8 20. Rd1!**, White is winning in Mulay - Li. Play ended: **20. ... Bd6 21. Ne6+**

fxe6 22. Rxd6+ Nd7 23. Raxd7+ Ke8 24. Rc7+ when **Black resigned**.



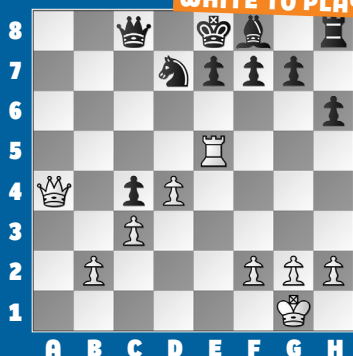
1.

BLACK TO PLAY



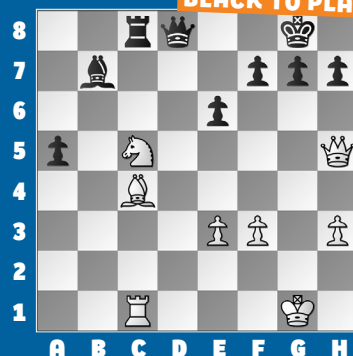
2.

WHITE TO PLAY



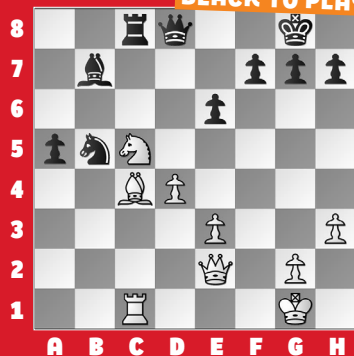
3.

BLACK TO PLAY



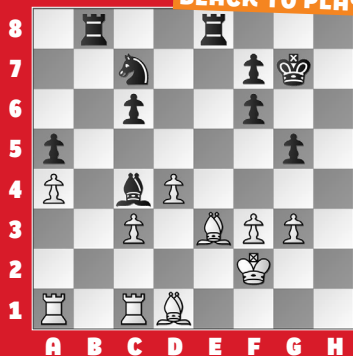
4.

BLACK TO PLAY



5.

BLACK TO PLAY



6.

BLACK TO PLAY



SOLUTIONS

1) 30. ... Rxe5 Black sees the discovered attack, but trades off a loose piece first. The immediate **30. ... Ng6?? 31. Rxe8+** wins for White! **31. Rxe5 Ng6** Black wins an Exchange. (Cheung - Liu, Orlando, 2025) **2) 28. Ra5** Down five points of material, White is still playing for the win! **28. ... e5** Not **28. ... Kd8?? 29. Ra8 Nb8 30. Qa5+ Qc7** (or **30. ... Kd7 31. Qb5+** nabs the knight) **31. Rxb8+** winning. **29.**

Ra8 Qxa8 30. Qxa8+ Ke7 31. dxe5 White is slightly better. (Vuyyuru - Williams, Orlando, 2025, analysis) **3) 29. ... Qd2!** White has too many weaknesses. **30. Nd3 Qxe3+ 31. Kg2 Rxc4! 32. Rxc4 Qxd3** Black has too many pawns for the Exchange. (Yang - Yue, Orlando, 2025) **4) 27. ... Nxd4! 28. Qh5** Or **28. exd4 Qxd4+ 29. Qf2 Qxc5** wins. Black next played **28. ... Nf3+!?** but cleaner was **28. ... Bxg2!** when White can resign. After **29. gxf3** we reach the previous

puzzle. (Yang - Yue, Orlando, 2025) **5) 34. ... Nd5** A simple attack that is not-so-simple to defend. **35. Bd2 Rb2 36. Rc2 Rxc2 37. Bxc2 Re2+** Black exploits the overloaded light-squared bishop, winning a piece. (Li - Schaefer, Orlando, 2025) **6) 24. ... Bxd4!** Always beware tactics that begin with equal trades. **25. Bxd4 Bd5!** Brilliant discovery. **26. Rc2** Anything else hangs the e2-bishop. **26. ... Bb3** Winning material. (Lan - LeBakken, Orlando, 2025)