

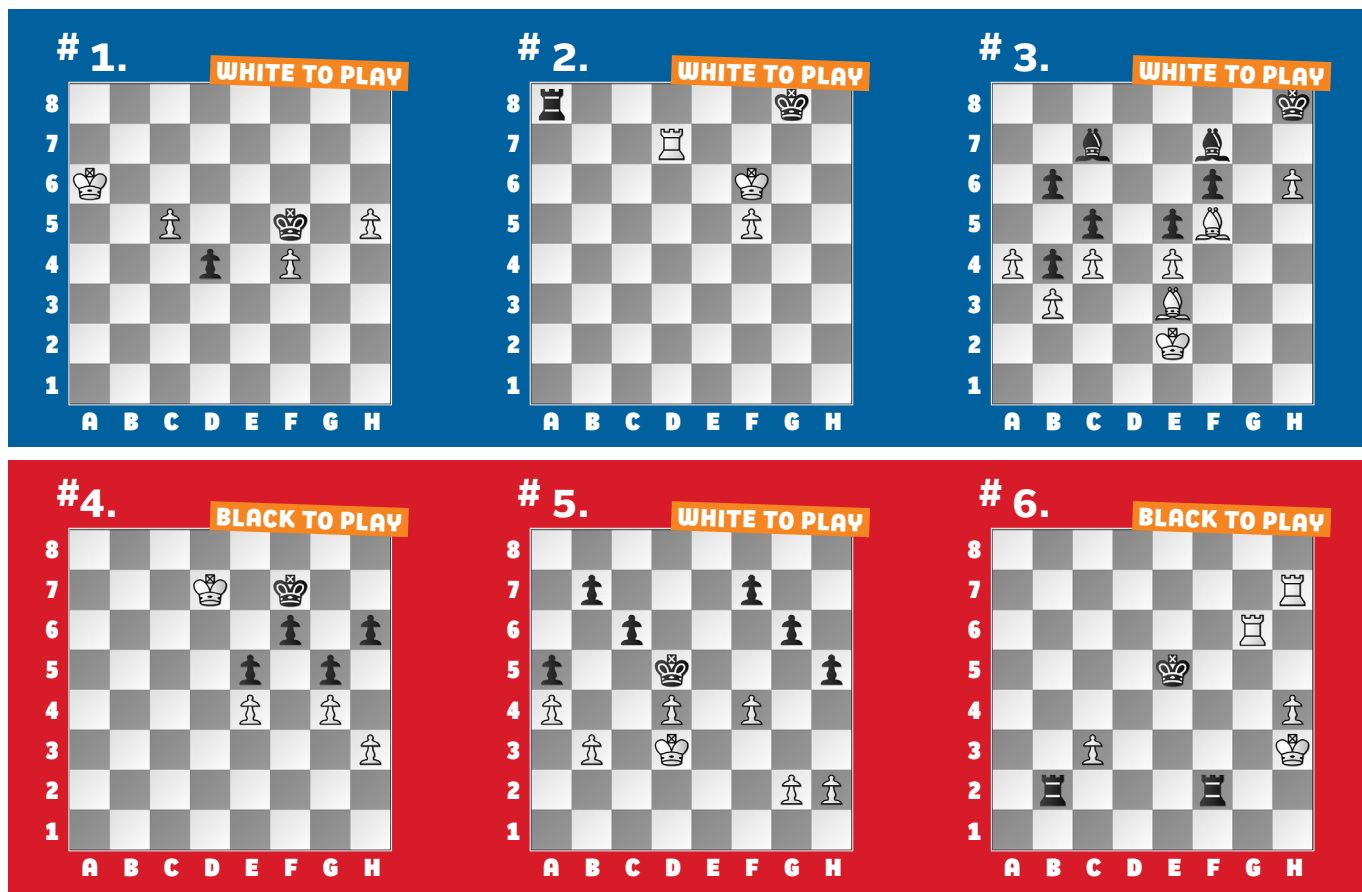
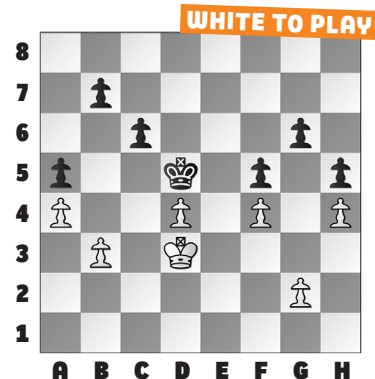
## SUPERNATIONALS VIII, PART 2

This week's puzzles come from the Elementary Championship sections of **SuperNationals VIII**. They all feature key endgame concepts that

are instructive to readers of all ages.

In our **example**, White begun with the correct **34. g3!** following the principle of trying to run the opponent out of waiting moves. Black should have followed suit, as after **34. ... b5??** Black introduces new dynamics into the position, and so must be careful. Even the simple **34. ... b6** is testing, as White must find **35. Ke3! b5 36. Kd3!** in order to hold the draw. But now, White wins in style with **35. b4!! axb4 36. a5** in

Su – Xiang. Note that **35. ... bxa4** is no better for Black.



## SOLUTIONS

**1) 66. c6** White's king is outside the square of Black's d-pawn, yet White wins! **66. ... Ke6 67. c7 d3** The point was **67. ... Kd7 68. Kb7** wins! **68. c8=Q+** with mate shortly. (Cui – Pavuluri, Orlando, 2025) **2) 61. Kg6!** White keeps Black's rook on the back rank. **61. ... Kf8** Or **61. ... Ra6+** **62. f6** is similar. **62. f6!** and White wins after: **62. ... Kg8 63. Rg7+ Kh8 64. Rh7+ Kg8 65. f7+ Kf8 66. Rh8+** with mate to follow. (Guo – Wu,

Orlando, 2025) **3) 46. a5!** A pawn lever! **46. ... bxa5 47. Bxc5 a4!?** Or **47. ... Bd8 48. Bd6 Kg8 49. c5!** wins. **48. Be7! Bh5+ 49. Kd2** and **Black resigned.** (Cherukuri – Khanbutaev, Orlando, 2025) **4) White** has just taken the opposition, which means they're winning, right? **48. ... f5!! 49. gxf5 h5 50. Kd6 Kf6** While **50. ... g4** also wins, this is simpler. **51. Kd5 g4 52. hxg4 hxg4 53. Kc4 g3** and **White resigned.** (Choudhury – Xu, Orlando, 2025) **5) 33. g3!** If the

question is, "What is White's best move?" this is hard. But this move retains the most waiting moves. **33. ... f6 34. h3** White has enough tempi. Sample line: **34. ... g5 35. fxf5 fxf5 36. g4 hxg4 37. hxg4 b6 38. Ke3** White can safely shuffle. (Su – Xiang, Orlando, 2025, analysis) **6) 37. ... Rh2+** The game ended with a draw here, given: **38. Kg4 Rbg2+ 39. Kh5 Rxh4+ 40. Kxh4 Rxg6** and the c-pawn falls shortly. (Joseph – Alluri, Orlando, 2025, analysis)