

SUPERNATIONALS VIII, PART 1

WEDNESDAY WORKOUT ■ MAY 14, 2025

BY JJ LANG

PUZZLE 1.



WHITE TO MOVE

PUZZLE 2.



WHITE TO MOVE

PUZZLE 3.



BLACK TO MOVE

PUZZLE 4.



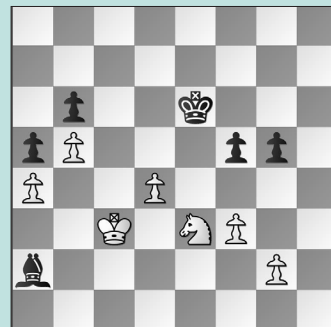
BLACK TO MOVE

PUZZLE 5.



BLACK TO MOVE

PUZZLE 6.



BLACK TO MOVE

SOLUTIONS

PUZZLE 1. 18. Bxf6! No queens? No problem! White's kingside attack is still fatal! 18. ... Qxe2+ 19. Kxe2 gxf6 20. Rhg1+ Kh8 21. Rg4! and Black resigned, with Ra1-g1 and Rg4-h4 mate coming. (Fang – Yan, Orlando, 2025) **PUZZLE 2.** 25. Rxf5! A typical attack. 25. ... gxf5 26. Nxd5!! Of course, "typical" doesn't mean "straight-forward." This had to be played first. After 26. Rg2+? Kh7 27. Qh3 Kh6! 28. Qe3+ Kh7, White should have repeated, and after 29. Qf3? Qh4 was worse. 26. ... Qxd5 27. Qg5+ Kh7 28. Qxh5+ Kg7 29. Qg5+ White is winning. (Vinod – Bynum, Orlando, 2025, analysis) **PUZZLE 3.** 19. ... f4 An easy move to underestimate. 20. exf4 Bxf4 21. Re3 What else? If 21.

d6 Re6 wins, or 21. Bc1 Re5 wins too. 21. ... Bxe3 22. Nxe3 Rxf2! Another "only move" from Tani! 23. Kxf2 Rf8+ 24. Ke1 Qxe3+ 25. Qe2 Qg3+ 26. Kd1 Rf2 and Black won shortly. (Mangudi – Adewumi, Orlando, 2025, analysis) **PUZZLE 4.** 11. ... e4! This allows Na3-b5 but is that so bad? After 11. ... a6?! 12. dxe5 Nxe5, White had a slight advantage due to pressure on the IQP. 12. Nb5 Bxg3! 13. Nxc7 Bxc7 Black nets three pieces for the queen. 14. Bc2 exf3 15. Qxf3 Bg4 16. Qd3 Black can consolidate easily and is better. (Chasin – Koganov, Orlando, 2025, analysis) **PUZZLE 5.** 28. ... Nxc3 Black must disrupt the rooks at once. 29. b4 Qxb4 30. Bh7+! This had to be anticipated. 30. ... Kxh7 31. Rxd8 Nxd1!! A key *intermezzo*. Black

played 31. ... Rxd8? which feels automatic, but 32. Rxd8 Nxa4 33. Rd7 and White's attack was too great. 32. Rxa8 Qd2!! White cannot hope for more than a draw. 33. Qe4+ f5 34. Qxe6 Or 34. Qf3 Qe1+ 35. Kh2 Nxf2 holds. 34. ... Qxf2+ and White should be happy to draw. (Goodrich – Tran, Orlando, 2025, analysis) **PUZZLE 6.** 46. ... f4! The last try! After 46. ... Bd5?? 47. Nxd5 Kxd5 48. g3 Kd6 49. Kc4 Ke6 50. d5+ Ke5 51. f4+ gxf4 52. gxf4+, Black resigned. 47. Nc4 Other tries like 47. Ng4 Kf5 48. Ne5 Ke6 make no progress. 47. ... Bxc4 48. Kxc4 Kd6 Black keeps opposition by staying off the d5-square until White's king reaches the b3- or d3-square. 49. Kc3 Ke6! 50. Kc2 Kd6 51. Kb3 Kd5 Black holds. (Ngo – Shvarts, Orlando, 2025, analysis)