

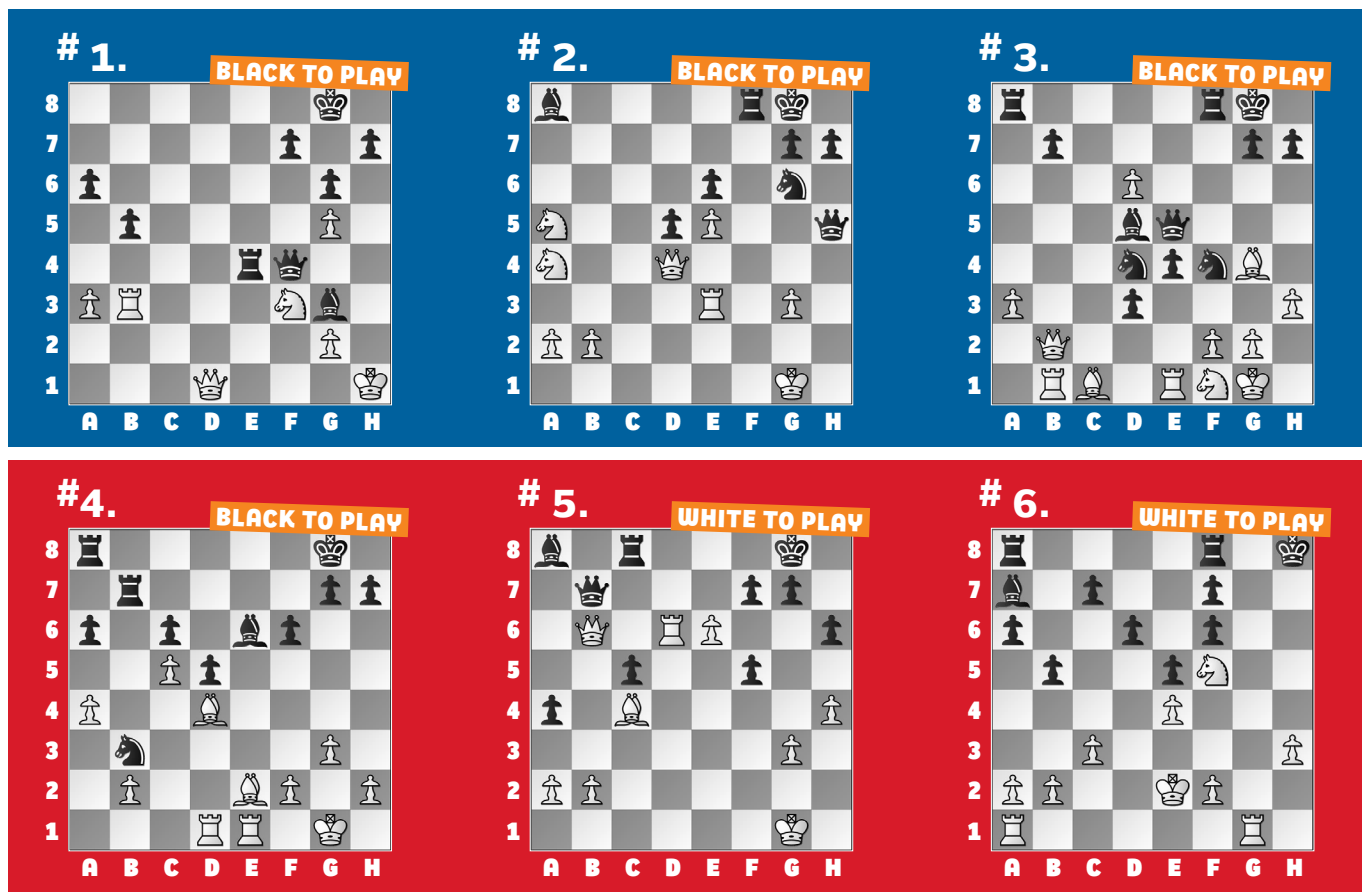
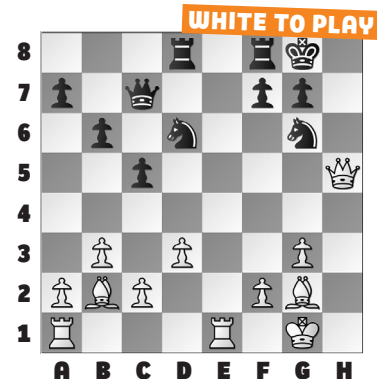
SUPERNATIONALS VIII, PART 1

Today's puzzles come from the just-concluded **SuperNationals VIII** in Orlando. A flash report with winners is available, and a full

report with more highlights from Sunday will be available Thursday. In the time being, check out WGM Sabina Foisor's annotations in the reports from Friday's and Saturday's games.

One of her highlights was this nice finish from the K-3 Champion, Lukas LeBakken, in round 2. Here, White found **26. Bd5!** and after **26. ... Ne7 27. Rxe7! Qxe7 28. Kg2** White threatens Ra1-h1 mate with mate to follow as there is no ... f7-f6. After

28. ... Nf5 29. Rh1 Nh6, as a **bonus**, what should White play next?



SOLUTIONS

1) 36. ... Re1+ Black wins the queen if White recaptured, so **White resigned** in light of **37. Nxe1 Qf1** mate. (Ethan Liu – Eric Liu, Orlando, 2025) **2) 36. ... Qh3!** and **White resigned**, as **37. Re1 Qxg3+ 38. Kh1 Rf2** wins. (Zhu – Slate, Orlando, 2025) **3) 30. ... Nxg2! 31. Be3** Or **31. Kxg2 e3+ wins. 31. ... Nf3+ 32. Bxf3 Nxe1** and **White resigned**. (Shetty – Hardaway, Orlando, 2025) **4) 28. ... Bf5!** A very

subtle trap. **29. Be3** If **29. Bd3?? Nxd4 30. Bxf5 Nxf5** wins. **29. ... Bc2 30. Bf3 Bxd1** and Black is better, although White managed to hold a draw later. (Guo – Haripradeep, Orlando, 2025) **5) 31. exf7+ Kh7 32. Qxb7** Making equal trades to win tactically is always an easy thing to miss. But now **32. ... Bxb7 33. Re6 Bc6** or **33. ... Rf8 34. Re8** as the f7-pawn is still defended. **34. Rxc6!** and **Black resigned**. (LeBakken – Egelhof, Orlando, 2025) **6) 21.**

Rg4! Black just successfully traded queens after having to weaken her kingside structure. But, now Black resigned upon realizing that **Ra1-g1** and **Rg4-h4** mate is unstoppable! (Fang – Yan, Orlando, 2025) **Bonus)** White won with **30. Qxh6**, and **30. Qg6** was just as good. **Black resigned** after the text move, as **30. ... gxh6 31. Rxh6** threatens the unstoppable **32. Rh8** mate. Yet again, the d5-bishop's pin preventing Black's ... f7-f6 "escape hatch" is crucial.