

SUPERNATIONALS VIII PREVIEW

WEDNESDAY WORKOUT ■ MAY 07, 2025

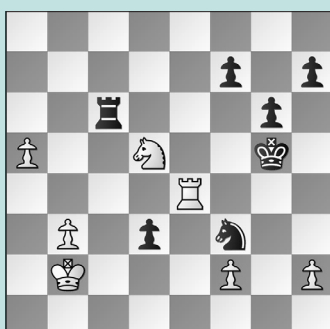
BY JJ LANG

PUZZLE 1.



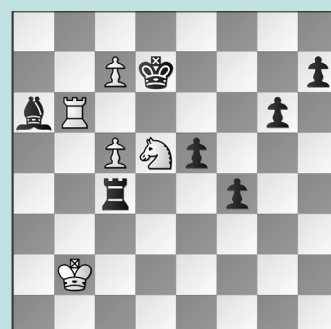
BLACK TO MOVE

PUZZLE 2.



BLACK TO MOVE

PUZZLE 3.



WHITE TO MOVE

PUZZLE 4.



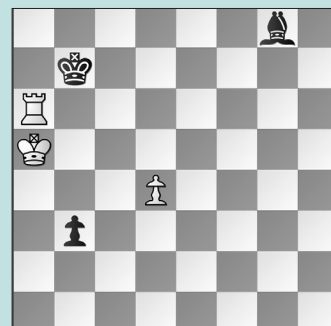
WHITE TO MOVE

PUZZLE 5.



WHITE TO MOVE

PUZZLE 6.



BLACK TO MOVE

SOLUTIONS

PUZZLE 1. 13. ... f5 Dominating the center. 14. Nxe5 fxe4 Not 14. ... dxe4? 15. Bc4 when White has play. 15. Bxe4 White can't even play Bd3-a6 and castle due to ... Qc7-b6/a7+ winning the a6-bishop. 15. ... dxe4 16. Qc4 Nd5 With mate staved off, Black is piece-up. (Lin – Levine, New York, 2025) **PUZZLE 2.** 47. ... Rc2+! An important *intermezzo*. The immediate 47. ... d2 allows 48. Ne3 Rc1 49. a6 and White has counterplay. 48. Ka3 d2 49. Ne3 Rc3! 50. Nd1 Rc1 51. Nb2 Or 51. Ne3 Re1! wins, but note that 51. ... d1=Q?? 52. Nxd1 Rxd1 53. Ra4 holds on. 51. ... Rb1 52. a6 Rxb2 53. Kxb2 d1=Q and White resigned shortly. (Chen – Wang, Lisle, 2024)

PUZZLE 3. 45. Rd6+ Not 45. Rxa6?! Rxc5! 46. Ra8 Kd6 when Black has chances. 45. ... Ke8 46. Rxa6 Rxc5 47. Ra8+ Kd7 48. c8=Q+ and Black resigned soon. (Atwell – Z. Tang, St. Louis, 2024) **PUZZLE 4.** 37. Rxf8+ Kxf8 38. Qd6+! Keeping control of the e5-square. 38. ... Kg8 If 38. ... Ke8 then 39. Qb8+ Ke7 40. Bb4+ Kd7 41. Ne5+ wins. 39. Qb8+ Ne8 Or 39. ... Kf7 40. Ne5+ Ke7 41. Bb4+ Rc5 42. Bxc5 mate. 40. Nd4 Note 40. Qxe8+ Qf8 41. Qxe6+ also wins. 40. ... Qxh3+ 41. Kg1 Unable to save both pieces, Black resigned three moves later. (Atwell – D. Tang, Bellevue, 2025) **PUZZLE 5.** 18. Qh6+ Kg8 19. Nc3! Nd6 20. Nb5! The point is 20. Qh7+ Kf8 21. Qh8+ Qxh8 22. Rxh8+ allows 22. ... Kg7! as the rook is defended. 20. ... Nxb5

21. Qh7+ Kf8 22. Qh8+ Ke7 Now, 22. ... Qxh8 23. Rxh8+ Kg7 hangs the rook on e8, but 23. ... Ke7 still loses: 24. Re1+ Be6 25. Rxe8+ Rxe8 26. Bxb5 when White wins the bishop. 23. Re1+ Be6 24. Qxf6+ Kxf6 25. Bxb5 Having regained material, White collects interest next. (Wang – Johnson, Charlotte, 2025) **PUZZLE 6.** 114. ... Kc7! The only drawing move! Black lost after 114. ... Bc4?? and, after 115. Rg6 Kc7 116. Rb6 Kd7 By keeping control of the b5-square, Black loses pressure on the rook. But keeping pressure on the rook would either concede the b5-square or hang the b-pawn, so White wins. 115. Rb6 Bc4 White's rook cannot stay on the b-file without getting in the king's way of b4, so Black holds. (Ngo – Mikaelyan, Rockville, 2024, analysis)