

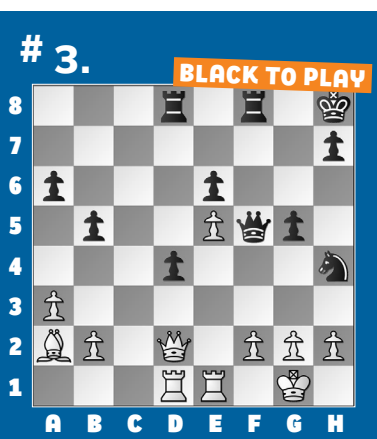
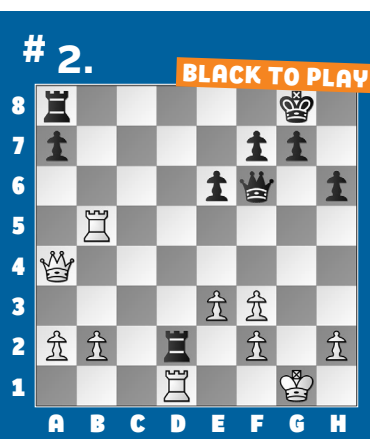
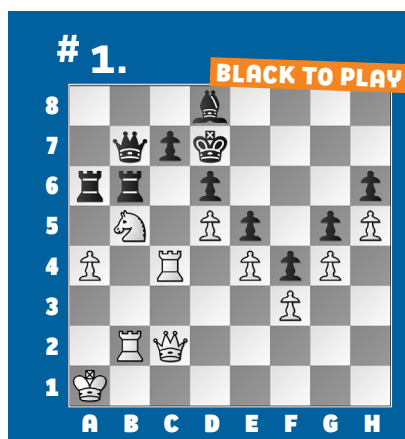
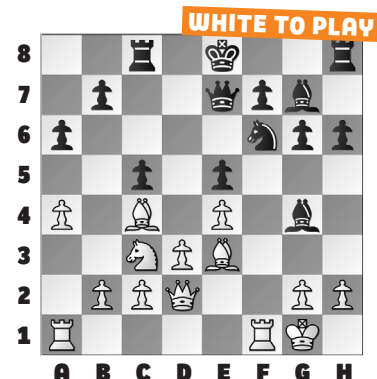
SUPERNATIONALS VIII PREVIEW

Over 4,600 chess players will descend on Orlando this weekend for **SuperNationals VIII**. This week's puzzles highlight recent games of

some of the top players you'll see on WGM Sabina Foisor's live stream.

Our **example** comes from FM Linxi Zhu, who enters the K-12 Championship is the 10th-seeded player, despite being only a 5th grader! Going after the d5-square, he found the correct **16. Rxf6!** to dominate the center after **16. ... Bxf6** **17. Nd5 Qd6** **18. Nxf6+ Qxf6** **19. Rf1** when the f7-pawn drops. Note that 16. ... Bxf6 17. Rf1 was similar. After **19. ... Qd6** **20. Bxf7+**

Kd7 **21. h3** **Be6** **22. Rf6**, White won material in Zhu – Cherukuri.



SOLUTIONS

1) 85. ... Rxb5 The a-pawn is pinned! **White resigned**, as **86. Rxb5 Qxb5** leaves Black piece-up. (Vertetics – Lin, New York, 2025) **2) 21. ... Qg6+** Black breaks through! **22. Kh1** Abandoning the f-pawn is necessary. White probably overlooked that **22. Kf1 Qd3+** won the d1-rook. **22. ... Rxf2** **23. Rg1** Or **23. Qg4 Qc2** wins. **23. ... Qf6** **24. Qe4 Rd8** Use all your pieces! (Georgiev – Atwell, Bellevue, 2025) **3) 28. ...**

Qg4 Black threatens mate and ... **Nh4-f3+**. It's too much to stop. **29. f3 Nxf3+** There was no avoiding this, so **White resigned**. (Zurawski – Kaplan, Evanston, 2025) **4) 38. Nxf5!** White wins the calculation game. **38. ... Nxf4** **39. Nxe7 Nxd3** Note 39. ... **Kxe7** **40. Rxe7** was the key point. **40. Nc6** White has a material advantage. (Lin – Rajesh, New York, 2025) **5) 35. Bc4+** White embarks on a rescue mission for the trapped dark-squared bishop.

35. ... Kc6 **36. Be5** Black's knights are stuck defending each other, and White enjoys an extra pawn and the bishop pair for good measure. (Goodrich – Li, New York, 2025) **6) 40. Qe1** Combinations beginning with an equal trade of material are easy to overlook. **40. ... Qxe1+ 41. Nxe1 Nxc3** **42. Nc6** The key point: Black's bishop is trapped, and there's no ... **Nc3-b5** to defend it thanks to Black's unfortunate b-pawn. (Cherukuri – Lund, New York, 2025)