

WORLD CADETS & YOUTH R&B

WEDNESDAY WORKOUT ■ APRIL 23, 2025

BY JJ LANG

PUZZLE 1.



BLACK TO MOVE

PUZZLE 2.



BLACK TO MOVE

PUZZLE 3.



BLACK TO MOVE

PUZZLE 4.



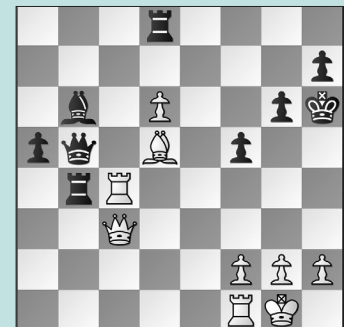
WHITE TO MOVE

PUZZLE 5.



WHITE TO MOVE

PUZZLE 6.



WHITE TO MOVE

SOLUTIONS

PUZZLE 1. 24. ... **Bxf3** Discovered attack! 25. **Qa6** Or 25. **Qxf3** **Rxa7** wins an Exchange. 25. ... **Qxa6** 26. **Rxa6** **Be4** Black is piece-up, although White came back to win! (Guo – Zabelin, Greece, 2025) **PUZZLE 2.** 15. ... **dxe5** An important trade. 16. **fxe5** **Bg5** White's queen is out of squares that defend the loose c3-knight! 17. **Qf2** **Qxc3** and Black resigned 22 moves later. (Braaten – Guo, Greece, 2025) **PUZZLE 3.** 42. ... **Nd2??** allowing White to break the fork with 43. **Bc2+** **Ne4** 44. **Bxe4+** Or 44. **Qd7** was even stronger, but not 44. **f3??** **Qxe3+** when Black is let off the hook. 44. ... **dxe4** 45. **Qd7** gave White a winning edge. 43. **Qxb3** **Qxf1+**

The right move order. Again, not 43. ... **Nd2??** 44. **Qc2+** winning. 44. **Kxf1** **Nd2+** Only now, with tempo, before White can use the b1-h7 diagonal. Black emerges piece-up. (Nguyen – Guntaka, Greece, 2025, analysis) **PUZZLE 4.** 31. **Be4** The extra tempo makes a difference. White forces simplifications into a won pawn endgame. Instead, 31. **Qxe7?** **Rxe7** 32. **Be4** **Rc7** was enough to hold on for a draw, with 33. **Rd8** being met by 33. ... **Kf8**. 31. ... **Rc7** Or 31. ... **Qxd8** 32. **Rxd8** **Kf8** 33. **Bxc6** **Re7** allows 34. **Rxe8+** **Rxe8** 35. **Bxe8** **Kxe8** 36. **Kf1** with a won pawn endgame. 32. **Bxc6** Black's pieces are overloaded. (Guo – Belyaletdinov, Greece, 2025, analysis) **PUZZLE 5.** 26. **cxb5** A surprising resource, even though the c-pawn is ostensibly pinned to

the loose c3-knight. White still won after 26. **c5** but 26. ... **e4!** instead of Black's 26. ... **b4** would have been tough. 26. ... **Rxc3** 27. **b6** The point! 27. ... **Qc8** Note that 27. ... **Qc6** allows 28. **Qxc6** **Rxc6** 29. **Rxc6** with a winning X-ray. 28. **b7** **Qc7** 29. **Rxc3** **Qxc3** 30. **Bc5!** White's runner cannot be stopped! (Sivakumar – Assyllov, Greece, 2025, analysis) **PUZZLE 6.** 36. **Qd2+** Instead, the players agreed to a draw here. But White had a win! 36. ... **Kg7** Or 36. ... **g5** 37. **h4** is fatal. 37. **Rc7+!** **Bxc7** If 37. ... **Kh8** 38. **Rfc1** wins. 38. **dx7** **Rc8** Or 38. ... **Rf8** 39. **Qc3+** is the same. 39. **Qc3+** **Kh6** 40. **Qc1+!** Not 40. **Be6?** **Rb1** when White must settle for 41. **Qe3+** with a draw. 40. ... **Kg7** 41. **Be6** Only now, with ... **Rb4-b1** prevented. (Guo – Bulgak, Greece, 2025, analysis)