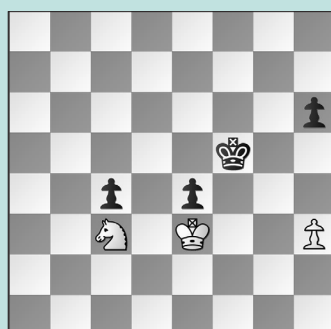


20TH KCF ALL-GIRLS CHAMPIONSHIP

WEDNESDAY WORKOUT ■ APRIL 16, 2025

BY JJ LANG

PUZZLE 1.



BLACK TO MOVE

PUZZLE 2.



BLACK TO MOVE

PUZZLE 3.



WHITE TO MOVE

PUZZLE 4.



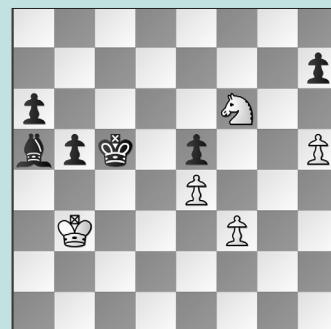
BLACK TO MOVE

PUZZLE 5.



WHITE TO MOVE

PUZZLE 6.



BLACK TO MOVE

SOLUTIONS

PUZZLE 1. 49. ... Kg5! My bet would be that White had assumed Black would play 49. ... Ke5, trying to help run the outside passer down the board. While that would lose, now Black hunts down the h-pawn. **50. Nxe4+ Kh4 51. Kf4** Or 51. Nf2 c3 52. Kd3 Kg3 nabs the last pawn, as well. **51. ... Kxh3 Draw.** (Loh – Zhou, Chicago, 2025) **PUZZLE 2. 22. ... Rf7** After **22. ... Kh8? 23. Qxb7** the d7-bishop was hanging, so Black had no time for ... Ra8-b8. **23. Re4!** The greedy 23. Qxb7?! is met by 23. ... Rb8 24. Qc7 Rxb2 when Black is better. But even after 23. Re4, Black is fine. (Zhou – Liu, Chicago, 2025, analysis) **PUZZLE 3. 20. Rxa5!** A strong resource, as the connected outside passers

were the pride of Black's position. White blundered with **20. Qb3??**. See the next puzzle for Black's rejoinder. **20. ... Bxc4?!** If 20. ... exd4 then 21. Bxd4 keeps the c-pawn protected without loosening defense of the f4-square. **21. Rxa8 Nxe3** Or 21. ... Rxa8 hangs a piece to 22. Bxc4 as 22. ... Nxe3 is rebuked by 23. Qe4 with pressure on the loose a8-rook. **22. Qa4!** White ties it all together! **22. ... Bxe2 23. Re1!** Loose pieces drop off. (Xin – Paragua, Chicago, 2025, analysis) **PUZZLE 4. 20. ... exd4 21. exd4 Nf4** Now, with the e2-bishop playing a crucial defensive role on the now-pinned c4-knight, Black's ... Nd5-f4 is very strong. **22. Qc2 Nxc5! 23. dxc5 Qxc5+** Exploiting the weakening f2-f3 move. **24. Kh1 Nxe2 25. Qxe2 Bxc4** Black won shortly.

(Xin – Paragua, Chicago, 2025) **PUZZLE 5. 18. g4!** Black's bishop is short on squares. Instead, **18. Re1** was played, and the game continued **18. ... Nc6 19. Qc4+ Kh8 20. g4 Bd7 21. Qc3+ Kg8 22. Qb3+** when Black could have equalized. **18. ... Bc8** What else? Not 18. ... Be6 19. Qe4!; But 18. ... Bxc2 19. Qc4+ nabs the bishop! **19. Qc4+** Or 19. Re1 is also good. **19. ... Kg7 20. Re1 Nc6 21. b4** Strong, with the point that **21. ... Bd7? 22. b5** wins with Re1-e7+ coming. (Zhou – Liu, Chicago, 2025, analysis) **PUZZLE 6. 55. ... Bd8!** This variation is too neat to not share. The natural 55. ... h6? allowed 56. Ng4 Bd2 57. Nxe5 a5 58. f4! when White had chances. **56. Nxb7 Be7!** White's knight is dominated. (Soumili – Zhou, Chicago, 2025, analysis)