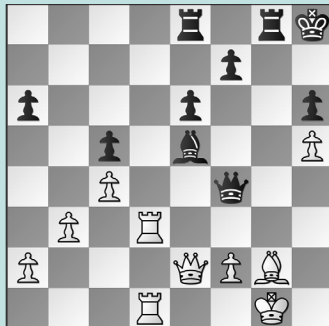


FIDE WORLD RAPID & BLITZ, PT. 12

WEDNESDAY WORKOUT ■ APRIL 09, 2025

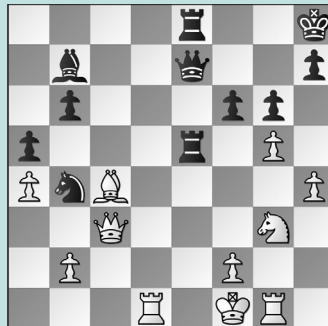
BY JJ LANG

PUZZLE 1.



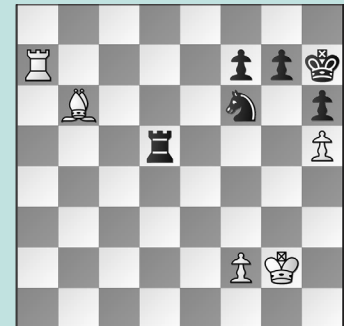
BLACK TO MOVE

PUZZLE 2.



BLACK TO MOVE

PUZZLE 3.



BLACK TO MOVE

PUZZLE 4.



WHITE TO MOVE

PUZZLE 5.



BLACK TO MOVE

PUZZLE 6.



WHITE TO MOVE

SOLUTIONS

PUZZLE 1. It's mate-in-five after: **31. ... Rxg2+** The more practical **31. ... Qh2+** was still enough to force resignation after **32. Kf1 Qxg2+ 32. Kxg2 Qh2+ 33. Kf3 Qh3+ 34. Ke4 Qf5+ 35. Ke3 Qf4** mate. (Adewumi – Liang, New York, 2024) **PUZZLE 2. 31. ... Nc2!** A fantastic overload. **White resigned** after **32. Be2** Or **32. Qxc2 Re1+ 33. Rxe1 Qxe1** mate, but now **32. ... Rxe2 33. Nxe2 Qxe2** mate. (Donchenko – Liang, New York, 2024) **PUZZLE 3. 55. ... Rg5+** A bit of finesse from Liang to take down Dubov in blitz. Either **55. ... Rxh5** or **55. ... Nxh5** allowed **56. Rxf7** when White should hold. **56. Kf1** Or **56. Kf3 Rf5+** followed by **... Nf6–d5** is similar, while other king moves allowed Black to nab

the h5–pawn with check. **56. ... Nd5!** Black gains tempo on the hanging bishop. **57. Bd4 Rf5** The point: Black has managed to cover the f7–pawn, while White has no way to prevent **... Nd5–f4–xh5**. The game ended after **58. Kg2 Nf4+ 59. Kg3 Ne2+** when **White resigned**. (Dubov – Liang, New York, 2024) **PUZZLE 4.** Black's last move, **28. ... Be7–d8**, allowed Ivanchuk to fire off a brilliancy. Instead, **28. ... Rf8** was more stubborn. **29. Be6!** With **Ng5xe6+** forking Black's king and queen, the bishop is untouchable. **29. ... Nh7** It's too late for **29. ... Rf8** as **30. Bxf7 Rxf7 31. Ne6+** picks up the queen. **30. Nxf7 Rf8** Guarding the d7–square with **30. ... Nf8 31. Nxh8** loses material. **31. Rd7 Qa5 32. Nxd8+** and **Black resigned** shortly. (Ivanchuk – Liang, New York,

2024) **PUZZLE 5. 35. ... Ne4!** There's no need to defend the rook! **36. Rxe4** Not **36. Qxh6 Qf2+** **37. Kh1 Nxg3** mate. **36. ... Rxc6** White still has two hanging knights! **37. Ne5 Qxb3 38. Rg4 Qd1+** Again, why defend if you can attack the king? **39. Kf2 Rf8+** Mate in five, and **White resigned** shortly. **PUZZLE 6. 43. Kf4!** The only way to hold. Liang erred with **43. g5??** allowing **43. ... Rb4** when White's pawn can't make progress: **44. g6 Rb6!** **45. g7 Rg6+** winning; White cannot play **43. Kh4??** as now **43. ... Kc2 44. Rxb2+ Rxb2!** wins for Black: **45. g5 Kd3 46. g6 Rg2 47. Kh5 Ke4 48. Kh6 Kf5** when **49. g7 Rh2** is mate. Sample line: **43. ... Kc2 44. Rxb2+ Rxb2 45. g5 Kd3 46. g6 Rg2 47. Kf5** White draws. (Liang – Mamedyarov, New York, 2024, analysis)