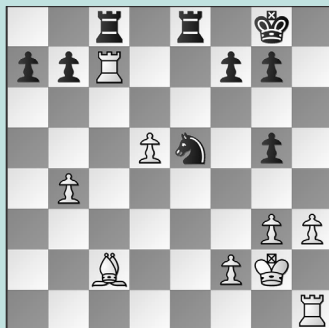


# FIDE WORLD RAPID & BLITZ, PT. 10

## WEDNESDAY WORKOUT ■ MARCH 26, 2025

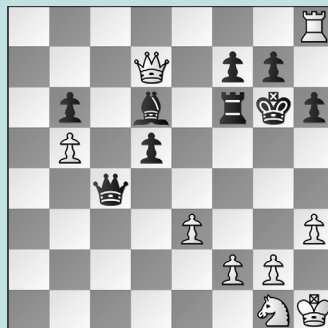
BY JJ LANG

### PUZZLE 1.



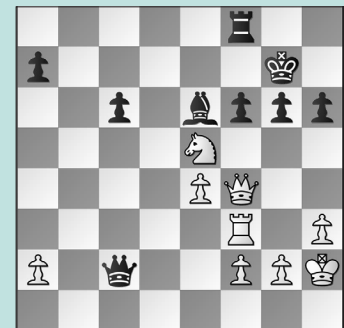
WHITE TO MOVE

### PUZZLE 2.



WHITE TO MOVE

### PUZZLE 3.



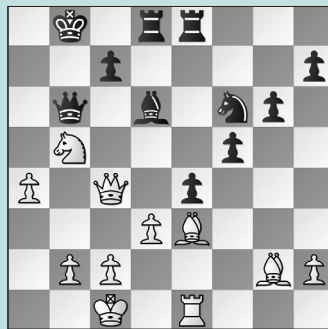
WHITE TO MOVE

### PUZZLE 4.



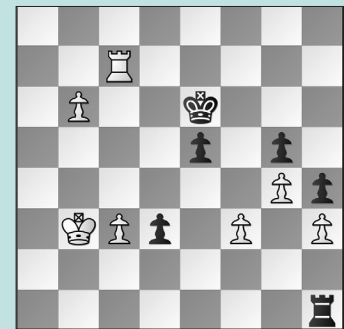
BLACK TO MOVE

### PUZZLE 5.



BLACK TO MOVE

### PUZZLE 6.



WHITE TO MOVE

## SOLUTIONS

**PUZZLE 1.** 31. **d6!** **Rxc7** Or 31. ... **Rcd8** 32. **Rd1** **Rd7** 33. **Ba4!** is similar. **32. dxc7 Rc8** 33. **Rd1 Nc6** 34. **b5!** And **Rd1-d8+** next. (Caruana – Lazavik, New York, 2024) **PUZZLE 2.** 50. **f4!** Suddenly, **Qd7-g4** mate is threatened. **50. ... h5** Blocking with **50. ... Re6?** allows **51. f5+ Kxf5** **52. Qxf7+ Rf6** **53. Qxg7** when Black's king is toast. **51. Nf3** The engine prefers **51. f5+! Rxf5** (if **51. ... Kg5** **52. Nf3** mate) **52. Qxd6+ f6** **53. Qd7** with an initiative, but Caruana's move is enough to win. **51. ... Bxf4** **52. exf4 Qc1+** **53. Ng1 Qxf4** **54. Qxd5** Black has only one pawn for the piece. (Caruana – Pranav, New York, 2024) **PUZZLE 3.** 31. **Nxg6!** White breaks through. **31. ... Kxg6** **32. Rg3+ Kf7** If **32. ... Kh7**

then **33. Qd6** wins. **33. Qc7+ Ke8** **34. Qb8+** Note: **34. Qd6**, with **Rg3-d3** to follow, also wins. **34. ... Ke7** **35. Qxa7+** The key idea! **35. ... Ke8** **36. Qb8+ Ke7** **37. Qc7+ Ke8** **38. Ra3** This is why White had to remove the a-pawn. **38. ... Bd7** **39. Qd6 Bc8** **40. Ra8** and **Black resigned** shortly. (Nakamura – Andriasian, New York, 2024) **PUZZLE 4.** 32. ... **Bh6!** **33. Be3** The critical line. White played **33. Bxe5** and resigned after **33. ... dxe5** **34. Nd5 Bxc1** **35. Rxc1 Qa7+** with the knights jumping into f2 next. **33. ... R5e7** **34. Nd5** White must save the knight before ... **Ng4xe3**. **34. ... Bxe3+** **35. Rxe3 Nxe3** **36. Nxe7+ Rxe7!** **37. Qxe3 Ng3!** With ... **Ng3-e2+** next. (Smirnov – Nakamura, New York, 2024, analysis) **PUZZLE 5.** 30. ... **exd3!** A

tactic so fearless that even Nakamura underestimated it in this blitz game. After **30. ... Qb7** **31. Nd4** White was fine and went on to win. **31. Bxb6** If **31. Qxd3**, then either **31. ... Bc5** or **31. ... Bf4** win on the spot. **31. ... d2+** **32. Kb1** The point is **32. Kxd2 Bb4+** **33. Kc1 Rxe1** mate. **32. ... dxe1=Q+** **33. Ka2 Qe6** Black is winning. (Nakamura – Bluebaum, New York, 2024, analysis) **PUZZLE 6.** 59. **Rc6+** The only move to draw. Caruana was in control after **59. b7?? d2** **60. b8=Q Rb1+** when **Kb3-c2** allows Black to promote with check, but **61. Kc4 Rxb8** **62. Rc6+ Kd7** saw White resign! **59. ... Kd5** **60. Rc7! Kd6** If **60. ... d2** **61. Rd7!** wins the d-pawn. **61. Rc8 Kd7** **62. Rc7+ Kd8** **63. Rc6** and Black is stuck! (Niemann – Caruana, New York, 2024, analysis)