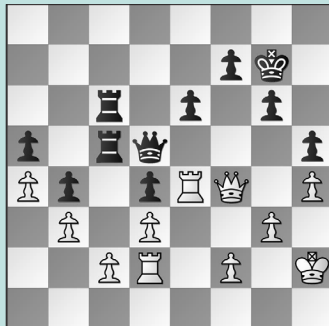


# FIDE WORLD RAPID & BLITZ, PT. 9

## WEDNESDAY WORKOUT ■ MARCH 19, 2025

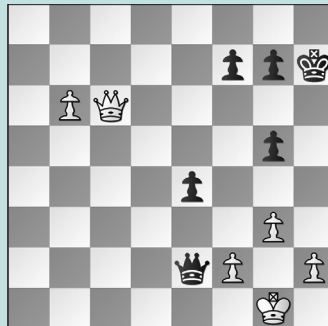
BY JJ LANG

### PUZZLE 1.



BLACK TO MOVE

### PUZZLE 2.



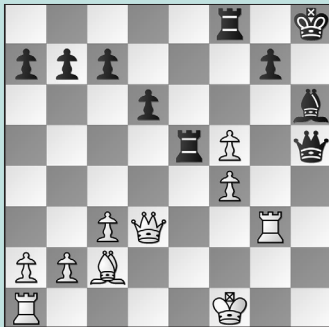
WHITE TO MOVE

### PUZZLE 3.



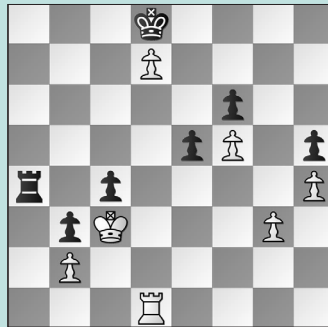
BLACK TO MOVE

### PUZZLE 4.



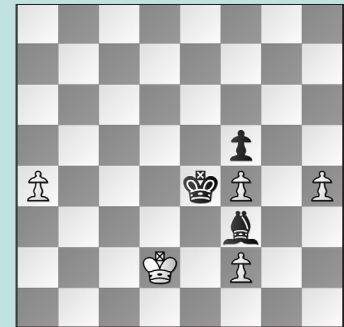
BLACK TO MOVE

### PUZZLE 5.



WHITE TO MOVE

### PUZZLE 6.



WHITE TO MOVE

## SOLUTIONS

**PUZZLE 1.** 48. ... e5! Not 48. ... Rxc2 49. Rxd4 with mutual chances. 49. Qf3 Rxc2 Black now infiltrates. 50. Rxc2 Rxc2 51. Kg2 Rc3 and White resigned. (Safarli – Dominguez, New York, 2024) **PUZZLE 2.** 40. Qd5 The immediate 40. b7? allows 40. ... Qd1+ 41. Kg2 Qf3+ when a perpetual is inevitable.; On the other hand, passive defense with 40. Qc1 Qb5 41. Qc7 Qd3 makes no headway. 40. ... g4 41. b7 Now, White's pawn gets through! 41. ... Qb2 42. Qf5+ Kg8 43. Qc8+ Kh7 44. b8=Q With no perpetual, Black resigned. (Dominguez – Amar, New York, 2024) **PUZZLE 3.** 33. ... Rb8 Activity over everything! The more direct 33. ... Rd2 with the idea of 34. Kf1 Nxf3 is also

better for Black. 34. Rc1 Not 34. Rxd4?? Rb1+ with mate. 34. ... e5 Black is in control, with a second rook invading the seventh next. (Macovei – Shankland, New York, 2024) **PUZZLE 4.** 29. ... Rxf5! The right rook, anticipating Kf1-g2. Not 29. ... Rexf5 30. Kg2! with the threat of Rh1-h1: 30. ... Bxf4 31. Rh1 when Black can resign. 30. Kg1 Not 30. Kg2 Re2+ when White's king is pushed back.; The immediate 30. Rh3 fails to 30. ... Qg4 when the f-pawn drops. 30. ... Bxf4 31. Rh3 Be3+! The key *intermezzo*. 32. Qxe3 Rxe3 33. Rxh5+ Rxh5 and White resigned. (Christiansen – So, New York, 2024) **PUZZLE 5.** 52. g4 Stunningly effective. White played the more prosaic 52. Rd6 e4 53. Rxf6 Kxd7 54. Re6 and went on to win.

52. ... hxg4 Not even 52. ... Ra6 covering the sixth rank holds, as 53. gxh5! or even 53. g5 would work, too; No different is 52. ... e4 53. g5 e3 54. g6 e2 55. Re1 and the g-pawn still breaks through. 53. h5 Black's rook cannot get to the h8-square in time. (So – Sarana, New York, 2024, analysis) **PUZZLE 6.** 60. Kc3! A stunning resource. Instead 60. a5 Kxf4 61. a6 Kg4 cleans up White's pawns while holding onto the f-pawn. After 62. Ke3 f4+ 63. Kd4 Kxh4 64. Ke5 Kg4, White resigned. 60. ... Kxf4 61. Kd4! Eyeing the f-pawn. 61. ... Be4 62. a5! Kg4 Note: 62. ... Kf3?? 63. h5 wins for White! 63. Ke5! Kxh4 64. Kf4 Or 64. f3 works too. 64. ... Kh5 65. f3 Bd3 66. a6 White draws, as the f-pawn falls. (Hakobyan – So, New York, 2024, analysis)