

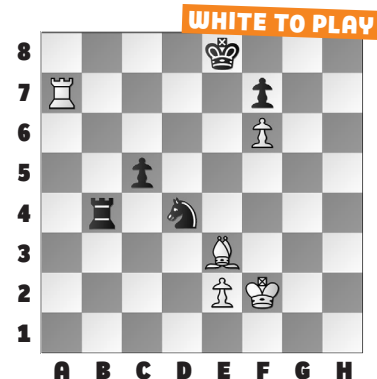
### FIDE WORLD RAPID & BLITZ, PT. 9

This week's puzzles feature **FIDE World Rapid & Blitz** games from Saint Louis Chess Club fixtures GMs Leinier Dominguez, Wesley

So, and Sam Shankland. These U.S. Championship regulars all had nice moments in New York, particularly So, who made it to the Blitz semifinals.

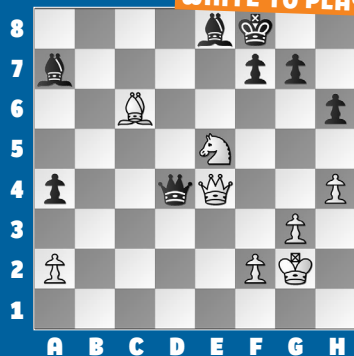
In our **example**, So was headed towards a draw against GM Ian Nepomniachtchi when disaster struck with **40. ... Ne6??** allowing White to win with **41. Re7+ Kd8** Or **41. ... Kf8** **42. Rxe6 fxe6** **43. Bxc5+** is even more efficient. But now, White still has **42. Rxe6** when **Black**

**resigned** due to **42. ... fxe6** **43. f7 Ke7** **44. Bxc5+** winning.



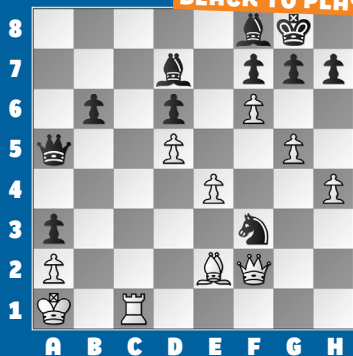
# 1.

WHITE TO PLAY



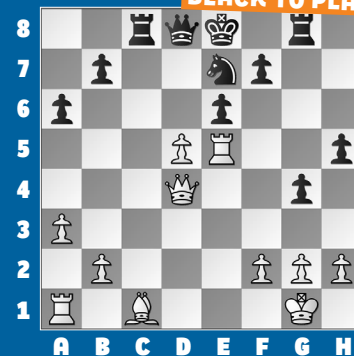
# 2.

BLACK TO PLAY



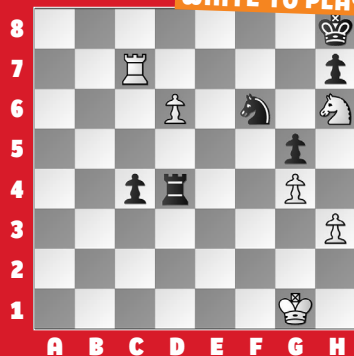
# 3.

BLACK TO PLAY



# 4.

WHITE TO PLAY



# 5.

BLACK TO PLAY



# 6.

WHITE TO PLAY



### SOLUTIONS

**1) 57. Ng6+** The best defense is sometimes offense. **57. ... Kg8** Or **57. ... fxc6** **58. Qxe8** mate. **58. Qxe8+ Kh7** **59. Nf8+** When **Black resigned**. (So – Vokhidov, New York, 2024)  
**2) 41. ... Qd2!** White combines an attack on the hanging c1-rook with a threat of mate on the b2-square. **White resigned**, as **42. Rb1 Qc3+** still mates. (Ibarra Jerez – Dominguez, New York, 2024) **3) 24. ... Nc6** Attacking with loose pieces

is always a risk. This clever fork exploits the pin of the d5-pawn. **25. Qa4 b5** Black breaks the pin with tempo! **26. Qe4 Nxe5** **27. Qxe5 Qxd5** Black won an Exchange and a pawn. (Madaminov – Dominguez, New York, 2024) **4) 39. Rc8+** It's easy to fixate on the d6-pawn, but now **39. ... Kg7** **40. Nf5+** wins a full rook, so **Black resigned**. (Shankland – Venkataraman, 2024) **5) 47. ... Rxc4** Black removes the defender of the b2-square and deflects the defender

of the d2-square. **48. Rxc4 b2** Black's pawns are faster. (Giri – So, New York, 2024) **6) 22. Bb6** White goes after the d6-bishop. **22. ... Rd7** **23. Bf5 Bf4** Black's most active try. Or **23. ... Re7** **24. Nxd6** wins a piece. **24. Bxd7!** More accurate. White was still better after **24. Be3 Rxd5?** (while not equalizing, **24. ... Bxe3** was better) **25. Nb6** and went on to win. **24. ... Bxc1** **25. Bf5 Bf4** **26. d6** The d-pawn has a clear path! (Shankland – Gagunashvili, New York, 2024)