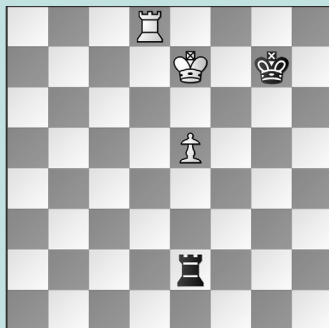


FIDE WORLD RAPID & BLITZ, PT. 8

WEDNESDAY WORKOUT ■ MARCH 12, 2025

BY JJ LANG

PUZZLE 1.



WHITE TO MOVE

PUZZLE 2.



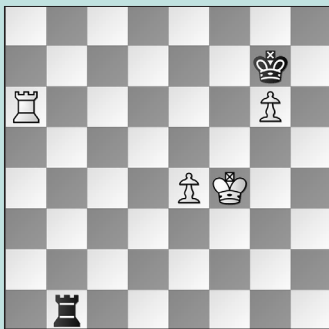
BLACK TO MOVE

PUZZLE 3.



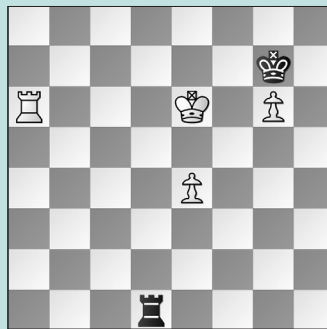
WHITE TO MOVE

PUZZLE 4.



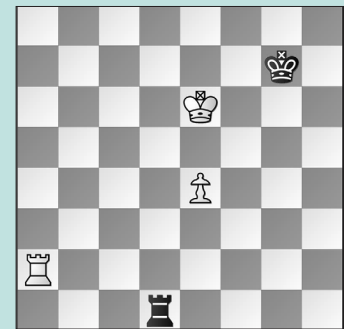
WHITE TO MOVE

PUZZLE 5.



BLACK TO MOVE

PUZZLE 6.



WHITE TO MOVE

SOLUTIONS

PUZZLE 1. 91. e6 Ra2 92. Ke8! White played 92. Rd7? allowing 92. ... Ra8 93. Rc7 Rb8? 94. Kd6+? reaching the next puzzle. 92. ... Ra7 Or 92. ... Kf6 93. e7 Re2 94. Rd6+ Ke5 95. Kd7 also wins. 93. e7! Kf6 94. Rd6+ Ke5 95. Rb6 Keeping the rook on the sixth is practical. 95. ... Ra1 Black looks to keep checking from the rear! 96. Kf8 Rf1+ 97. Kg7 Rg1+ 98. Rg6 White's bridge stops the checks. (All positions from M. Muzychuk – Cervantes, New York, 2024 and analysis) **PUZZLE 2.** 94. ... Kf8! With her rook on the long side, passive defense is the only way to hold. Black erred with 94. ... Kf6 95. Rf7+ Kg6 when White's winning move is addressed in the next puzzle.

95. Kd7 Black activates after 95. Rh7 Rb6+ (or 95. ... Rd8+ 96. Ke5 Rd1 is similar) 96. Ke5 Rb1 when Black's rook is no longer passive. 95. ... Ra8! Not 95. ... Re8?? 96. Rc1 Re7+ 97. Kd6 Ra7 98. Rc8+ Kg7 99. e7 winning. 96. e7+ If 96. Rb7 Kg7 (or 96. ... Kg8 is equivalent) 96. ... Kf7 97. Rb7 Re8 98. Kd6 Ra8 and Black holds. **PUZZLE 3.** 96. Ra7! Necessary prophylaxis, keeping Black's rook from reaching the a-file. After 96. Rf2? Rb6+ Black managed to keep the draw. 96. ... Rb6+ 97. Kd7 Rb8 If 97. ... Rb1 98. e7 Rd1+ 99. Ke8 White reaches a Lucena. 98. Ra2 This is different than 96. Rf2 because 98. ... Rb7+ 99. Kc6 leaves Black's rook without checking distance. **PUZZLE 4.** 75. e5 Passed pawns must be pushed! White played 75. Kf5? Rf1+

76. Ke5 Re1 77. Kd5 Rd1+ 78. Ke6 when we reach the next puzzle. 75. ... Re1 76. Kf5 Rf1+ 77. Ke6 Kxg6 78. Kd7+ Kg7 79. e6 A Lucena is coming, and White wins. **PUZZLE 5.** 78. ... Rg1! White rushed with 78. ... Kxg6?? 79. Ra2 Kg7 reaching the next puzzle. 79. Ra7+ Kxg6 Note that, with e4-e5 played, Ke6-d6 would have won here. 80. e5 Re1! 81. Ra2 Kg7 82. Kd6 Kf7 With good king position, Black draws. **PUZZLE 6.** 80. Ke7! We move towards puzzles 1-3 after 80. e5?? was played. 80. ... Re1 81. Rg2+ Kh7 82. Kf7 White uses mate threats to cut off Black's king. Note: 82. Rg4 also wins. 82. ... Kh6 83. Kf6 Rf1+ If 83. ... Kh7 then 84. e5 wins. 84. Ke6 Re1 85. e5 Black's king is cut off, and White's path to the Lucena is now clear.