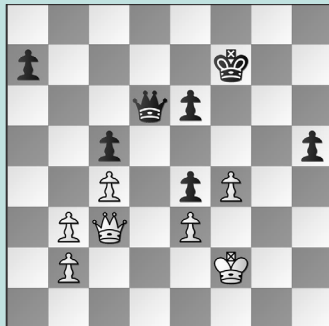


FIDE WORLD RAPID & BLITZ, PT. 7

WEDNESDAY WORKOUT ■ MARCH 05, 2025

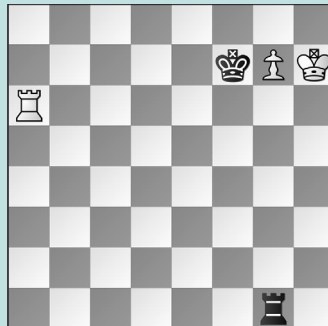
BY JJ LANG

PUZZLE 1.



BLACK TO MOVE

PUZZLE 2.



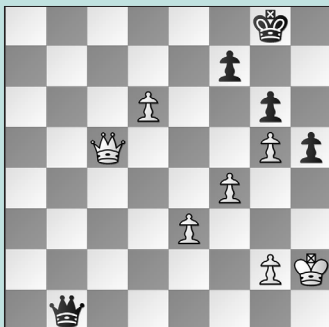
WHITE TO MOVE

PUZZLE 3.



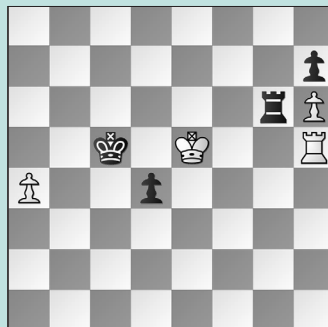
BLACK TO MOVE

PUZZLE 4.



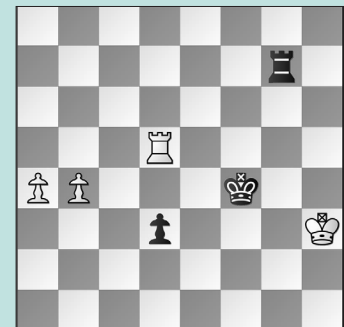
BLACK TO MOVE

PUZZLE 5.



WHITE TO MOVE

PUZZLE 6.



BLACK TO MOVE

SOLUTIONS

PUZZLE 1. 36. ... Qd1 Black breaks through! 37. Kg2 h4 Not the only move, but clearest. 38. Kh3 Qh1+ 39. Kg4 h3 40. Qh8 White does not have a perpetual. 40. ... Qg2+ 41. Kh4 h2 42. Qh5+ Qg6 The checks ran out, so White resigned. (Lesbekova – Foisor, New York, 2024) **PUZZLE 2.** In the game, white's king was on the g8-square and Black's king was on the e7-square. White played 68. Ra2, but this variation is after 68. Kh7 Kf7. 69. g8=Q+! The winning move! Not 69. Ra7+ Kf6 70. g8=Q?? Rh1 mate. 69. ... Rxc8 70. Ra7+ The right move order. 70. ... Kf8 71. Ra8+ Winning. (Foisor – Castillo, New York, 2024, variation) **PUZZLE 3.** 29. ... Bxc5 Demolishing White's

center. Instead, Black played 29. ... Nd5 and won later. 30. dxc5 Rxc5 There's no answer to the pin on the c4-knight, so Black regains her piece with two pawns of interest. (Javakhishvili – Pourkashiyani, New York, 2024, analysis) **PUZZLE 4.** 48. ... Qe1 The only move that holds. 49. Qc8+ The point is 49. d7 Qh4+ 50. Kg1 Qe1+ draws. 49. ... Kg7! White was unable to make progress after 50. Qh3 Qd2 here. Note that 49. ... Kh7?? is not equivalent: 50. Qh3! Qd2 51. Qd7! Kg7 52. Qa7 with the threat of Qa7-d4+ transposing into a won pawn endgame after 52. ... Qxd6. But 52. ... Kg8 53. d7 Kh7 54. Qd4 still wins! 50. Qh3 Qd2 51. Qd7 Qe1 Black can just repeat here. (Belenkaya – Pourkashiyani, New York, 2024)

PUZZLE 5. 53. Rh1 White erred with 53. a5? allowing 53. ... d3 54. Ke4+ Kc4 55. Ke3 when Black would have won after 55. ... Rg2!. Instead, Black played 55. ... Re6+ when White was able to draw. 53. ... d3 If 53. ... Kc4 54. Rc1+! Kd3 55. Rd1+ wins the d-pawn. 54. Ke4 Rd6 Or 54. ... Kc4 55. Rc1+ Kb4 56. Kxd3 holds. 55. Ke3! White holds. (Khotenashvili – Cervantes, New York, 2024, analysis) **PUZZLE 6.** 57. ... Ke4! Black played the natural 57. ... Ke3 but 58. a5 d2 59. a6 Rg1 60. b5 Ra1 61. Kg4 Ra5 62. Rd8 held, but she flagged! 58. Rd6 Rg5! 59. b5 Or 59. a5 is similar. 59. ... Rd5 It's a Lucena! 60. Re6+ Kd4 61. Re1 d2 62. Rd1 Kc3 White's pawns are slow, and ... Rd5-d3-b3 is next. (Melekhina – Foisor, New York, 2024, analysis)