

FIDE WORLD RAPID & BLITZ, PT. 6

WEDNESDAY WORKOUT ■ FEBRUARY 26, 2025

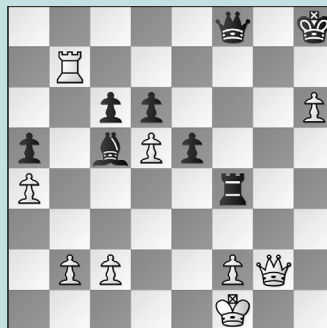
BY JJ LANG

PUZZLE 1.



BLACK TO MOVE

PUZZLE 2.



WHITE TO MOVE

PUZZLE 3.



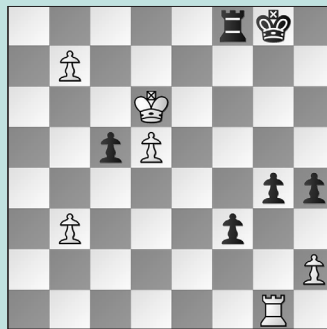
WHITE TO MOVE

PUZZLE 4.



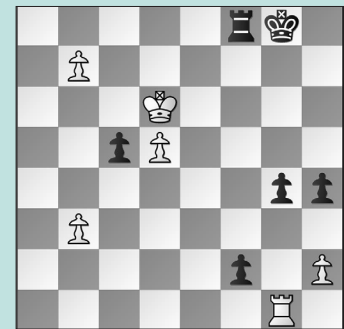
WHITE TO MOVE

PUZZLE 5.



BLACK TO MOVE

PUZZLE 6.



WHITE TO MOVE

SOLUTIONS

PUZZLE 1. 31. ... Rf5! The immediate 31. ... Qc2 allows 32. Nce2 hanging together. **32. Qc4** Not 32. Qxf5 Bxc3+ 33. Kd1 Qd2 mate. **32. ... Qc2** Only now that the queen has been deflected off the protected c5-square! **33. Rf2** Or 33. Nfe2 Rxh5 still wins a piece. **33. ... Qxc3+** Piece-down, **White resigned.** (Woodward – Naroditsky, New York, 2024) **PUZZLE 2. 46. Rb8!** There is no way to save the queen and the mate on g7. Instead, **46. Qg7+ Qxg7 47. hgx7+ Kh7 48. dxc6** was equal if Black found 48. ... Rxf2+ 49. Ke1 Rxc2 50. c7 Bb4+ covering the c8-square with tempo. Instead, after **48. ... Rc4?? 49. c7 Bd4 50. g8=Q+! Kxg8 51. Rb8+ Kf7 52. c8=Q Rxc8 53. Rxc8**, White had a won endgame. **46.**

... Rxf2+ This is easy to over-estimate in a blitz game, but **47. Qxf2** wins. (Jacobson – Tari, New York, 2024, analysis) **PUZZLE 3. 33. Bxa7!** Positional sacrifice! **33. ... Rxa7** If 33. ... Qxa7 34. Qxa7 Rxa7 35. b6 wins (as does 34. b6 right away) as Black must return material while White keeps a queenside passer. **34. b6 Ra8 35. b7** Black is materially ahead in name only. (Jacobson – Nakamura, New York, 2024) **PUZZLE 4. 30. Bxe6! Nxd4** If 30. ... Rxe6 then White forces a way to sac the queen: 31. Qd8+ Re8 32. Qxe8+ Rxe8 33. c8=Q winning. **31. Bxc8 Ne2+ 32. Kf1** Either king move was fine. White won after **32. ... Nxc1 33. Bg4 Rc6 34. Rb8** mate. (Jacobson – Meylan, New York, 2024) **PUZZLE 5. 38. ... g3** The only winning move! After **38. ...**

f2 we reach the next puzzle. **39. hgx3** Or 39. Kc7 f2 again wins without White's rook able to enter the game. **39. ... f2** Only now, with White's g-pawn in the way. **40. Rf1 hgx3 41. Kc7 g2** Winning. (Ivanchuk – Naroditsky, New York, 2024, analysis) **PUZZLE 6. 39. Rgx4+ Kh7** If 39. ... Kf7 40. Rf4+ Kg7 41. Rxf8 wins. **40. b8=Q!** Ivanchuk played **40. Rxh4??** when **40. ... Kg6 41. Rg4+** (or 41. Rf4 Rxf4 42. b8=Q f1=Q wins for Black) **41. ... Kf5!** saw Ivanchuk flag. **40. ... f1=Q** Or 40. ... Rxb8 41. Rxh4+ Kg6 42. Rf4 wins: 42. ... Rxb3 43. Rxf2 c4 44. Kc7 and Black's cut-off king spells doom. **41. Qc7+** Or 41. Qb7+ is equivalent. **41. ... Rf7 42. Rxh4+ Kg7 43. Rg4+ Kh7 44. Qc8 Rf6+ 45. Kc7** wins. (Ivanchuk – Naroditsky, New York, 2024, analysis)