

FIDE WORLD RAPID & BLITZ, PT. 5

WEDNESDAY WORKOUT ■ FEBRUARY 19, 2025

BY JJ LANG

PUZZLE 1.



WHITE TO MOVE

PUZZLE 2.



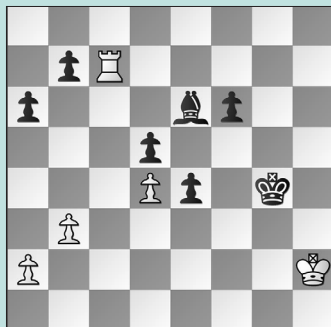
WHITE TO MOVE

PUZZLE 3.



WHITE TO MOVE

PUZZLE 4.



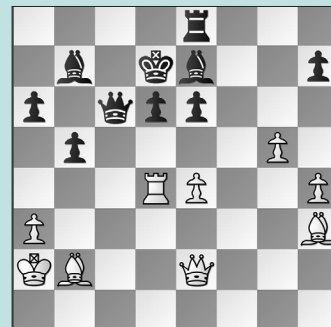
BLACK TO MOVE

PUZZLE 5.



WHITE TO MOVE

PUZZLE 6.



WHITE TO MOVE

SOLUTIONS

PUZZLE 1. 52. Rg7+ Black's king is short on squares!
52. ... Kh5 53. Kf6! There's no answer! White won slower after 53. d4, but the forced mate is gorgeous. 53. ... g3
54. Rg5 mate. (Yu – Sukandar, New York, 2024) **PUZZLE 2.** 35. Qa2! The queen must keep guarding the rook and stay on the a2-g8 diagonal. But, as long as she can do this, White wins. 35. ... Rd2 36. Rxe7+ Rxa2 37. Bd5+ You only get full credit if, like Alice, you saw this far. (Lee – Yu, New York, 2024) **PUZZLE 3.** 27. Nb7 Both queens are *en prise*, and yet the discovery on the d8-bishop is key. 27. ... Rxf3 White wins an Exchange with 27. ... Bxb7 28. Qxc3!, but even worse is 27. ... Qe5?? 28. Rxd8+ Ne8 29. Rxe8 mate.

28. Nxa5 Rd3 Or 28. ... Bxa5 29. Bxf3 again nets an Exchange. 29. Nxb3 White is up an Exchange and a pawn, and she went on to win. (Yu – Mamedjarova, New York, 2024) **PUZZLE 4.** 46. ... Kf3! White's king is cut off. The immediate 46. ... e3 allowed 47. Kg2 (the double-attack with 47. Re7 was even better) 47. ... Bf5 48. Rxb7 Be4+ 49. Kf1 when White's king gets in position, although Black later won. 47. Rxb7 The king is still too slow after 47. Kg1 Ke2 48. Rc2+ Kd1 49. Rh2 e3 50. Kf1 Bh3+! when the pawn breaks through. 47. ... Bg4! Black prepares ... f6-f5, and avoids 47. ... e3? 48. Rb6 when the rook activates. 48. Rf7 f5 49. Kg1 Ke2 White's king is shut out, and the pawns march on. (Beydullayeva – Yu, New York, 2024, analysis)

PUZZLE 5. 38. e7! Instead, 38. Rf7 Rb1+ 39. Kg2 Rxf2+ would have drawn, except that Gunina flagged before she could hit the clock here! 38. ... Re8 The *desperado* with 38. ... Rg3+ runs into 39. fxg3 Rb1+ 40. Kh2! (not 40. Kg2?? Qf1+ 41. Kh2 Qh1 mate) 40. ... Rh1+ 41. Kxh1 Qf1+ 42. Kh2 with safety. 39. Rd8 Qf7 40. Qd7! Black can resign. (Lee – Gunina, New York, 2024, analysis) **PUZZLE 6.** 28. Bxe6+! In the game, the practical 28. Qh5 Kc7 29. Bxe6 Bd8 30. Qxh7+ Re7 31. Qf5 won. 28. ... Kxe6 Or 28. ... Kc7 29. Qh5 transposes to the game. 29. Qg4+ Kf7 30. Qf5+ Kg8 Counterintuitive, as Black's king appears safer. But ... 31. g6! With the dark squares covered, mate is inevitable. (Abrahamyan – Heinemann, New York, 2024, analysis)