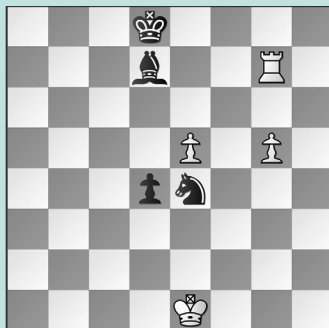


# FIDE WORLD RAPID & BLITZ, PT. 4

## WEDNESDAY WORKOUT ■ FEBRUARY 12, 2025

BY JJ LANG

### PUZZLE 1.



BLACK TO MOVE

### PUZZLE 2.



WHITE TO MOVE

### PUZZLE 3.



BLACK TO MOVE

### PUZZLE 4.



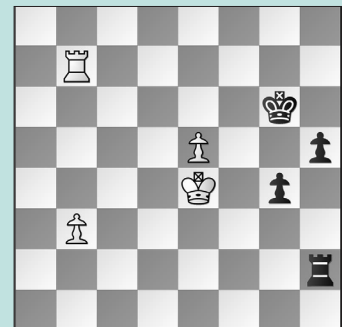
BLACK TO MOVE

### PUZZLE 5.



BLACK TO MOVE

### PUZZLE 6.



WHITE TO MOVE

## SOLUTIONS

**PUZZLE 1.** 56. ... d3 Passed pawns must be pushed! 57. Rxd7+ White's passer is too slow: 57. g6 Bg4 leaves White powerless against ... d3-d2+ next. 57. ... Kxd7 58. g6 Ke6 59. g7 Waiting with 59. Kd1 allows Black's knight to chase down the g-pawn: 59. ... Kxe5! 60. g7 Nf6 61. Kd2 Kd4 and Black wins. 59. ... Kf7 With both pawns stopped, **White resigned** shortly. (Serikbay – Wu, New York, 2024) **PUZZLE 2.** 17. dxc5 Starting with 17. Bxe7? allows 17. ... exf3 as an *intermezzo*! 17. ... Bxf3 If 17. ... exf3 18. Qxe7 is the point. 18. gxf3 Down a piece, **Black resigned** shortly. (Mou – Munkhzul, New York, 2024) **PUZZLE 3.** 16. ... Qg7! A surprising counterattacking resource. Instead,

16. ... Rg7 17. g3 left Black without the ... Bh6xf4 resource, but after 17. ... Qb5 18. Qxb5 Bxb5 19. Rfc1 Rxc1+ 20. Rxc1 e5 Black was still for choice. 17. g3 Bxf4 White can't recapture. (Derlich – Wu, New York, 2024, analysis) **PUZZLE 4.** 33. ... Qe4 34. Qf3 More testing was 34. Kf1 when Black must find: 34. ... c3! (not 34. ... Qxg2+? 35. Ke1! when the queen cannot get to the queenside) 35. Ke1 (not 35. Rxc3? Qb1+ 36. Ke2 Qa2+ 37. Kd3 Rxc3+! 38. Qxc3 Be4+! 39. Kxe4 Qd5+ 40. Kf4 Qf5 mate) 35. ... Qd3 and Black is better. 34. ... Qxf3 35. gxf3 Bxf3 White is not out of danger yet! 36. Be5 Rc5! 37. Bd4? More resistant was 37. Bd6 but Black is still winning. 37. ... Rh5 Mate comes next move! (Krush – Wu, New York, 2024) **PUZZLE 5.**

46. ... Nf8! A key resource. 47. Re8 Or 47. dxc6 Rxc6 48. Qh4 Qxb2! aims at the f6-pawn. Now, 49. Re8 (not 49. Qh6 Rxf6 removing the mate threat) 49. ... Qa3! guards the f8-knight. 47. ... Qxd5! 48. Qf4 Most testing. 48. ... Qc5+! 49. Kg2 Rd5 The key configuration! 50. Qh6 Rg5+ Covering the g7-square. (Vantika – Mou, New York, 2024) **PUZZLE 6.** 44. Rb8 The only drawing move. 44. ... Re2+ The testing 44. ... Kg5 45. Rg8+! (or 45. b4 also holds) 45. ... Kh4 46. e6 Re2+ 47. Kf5 g3 is riskier for both sides. 45. ... Kf4! The key is staying close to Black's kingside pawns. 45. ... Rf2+ 46. Ke4 Re2+ 47. Kf4 Rf2+ 48. Ke4 Kf7 49. Rb7+ The simplest way to repeat. 49. ... Kg6 The players agreed to a draw after 50. Rb8. (Mou – Tsolakidou, New York, 2024)