

# FIDE WORLD RAPID & BLITZ, PT. 3

## WEDNESDAY WORKOUT ■ FEBRUARY 05, 2025

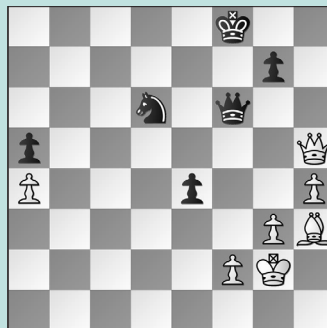
BY JJ LANG

PUZZLE 1.



WHITE TO MOVE

PUZZLE 2.



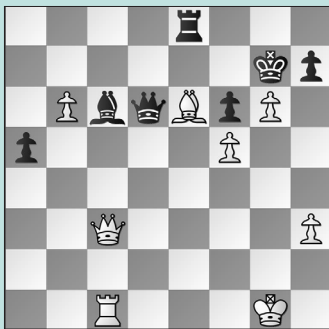
BLACK TO MOVE

PUZZLE 3.



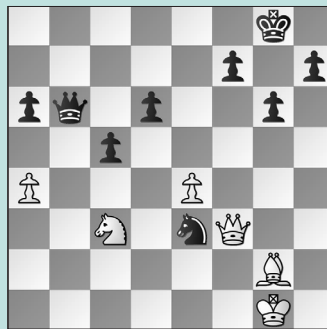
WHITE TO MOVE

PUZZLE 4.



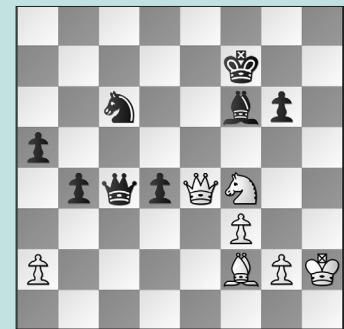
BLACK TO MOVE

PUZZLE 5.



BLACK TO MOVE

PUZZLE 6.



BLACK TO MOVE

### SOLUTIONS

**PUZZLE 1.** 30. Nf6+ A discovery, deflection, and fork all in one! 30. ... Bxf6 31. Qxg6+ Bg7 Otherwise, both bishops fall along the sixth rank. 32. Nxe6 White's crushing initiative was too much. (Adewumi – Woodward, New York, 2024) **PUZZLE 2.** 75. ... e3! A last-ditch necessity. Instead, 75. ... g6 76. Qd5 Kg7 77. Bg4 e3 was too slow, as 78. fxe3 let the king reach safety with Kg2-h3. 76. Qf3 While 76. fxe3 Qb2+ does not force a perpetual, the a-pawn will drop! 76. ... exf2! 77. Qxf6+ Or 77. Kxf2 Ne4+ transposes. 77. ... gxf6 78. Kxf2 Ne4+ 79. Kf3 Nc5! The a-pawn drops again. (Rakhmanov – Hardaway, New York, 2024, analysis) **PUZZLE 3.** 20. Nf5 Textbook attack. Each

improving move also clears a square for another piece to join the attack. 20. ... Qg6 Note: 20. ... g6 21. Nxh6 crushes. 21. Qh4 f6 22. Rf3! Rg8 White continues bringing in the pieces: 23. Rg3 Qf7 24. Rff3!! Rdf8 25. Rxc7+ Only now! 25. ... Rxc7 26. Qxh6+ Kg8 27. Nxc7 Qxc7 28. Rg3 With a material plus. (Hardaway – Andersen, New York, 2024) **PUZZLE 4.** 45. ... Rd8! When offense is the best defense! Not 45. ... Bd7 46. Bxd7! Qxd7 47. Qc7 when the pawn runs in. 46. Qxc6 Qg3+ 47. Kf1 Not 47. Qg2?? Qe3+ when the c-rook drops! 47. ... Qf4+ 48. Kg1 Qg3+ 49. Kf1 Qf4+ 50. Kg1 Qg3+ Draw. (Naroditsky – Adewumi, New York, 2024) **PUZZLE 5.** 37. ... c4 Black is down a piece for some pawns, but goes on a decisive attack. 38. Qf2 Qd4 Loose

pieces drop off! 39. Ne2 Qd2 The c-pawn has picked up speed! 40. Nf4 c3! Most forcing, but Black still won after 40. ... Qc1+ 41. Bf1 c3 however. (Soo – Woodward, New York, 2024) **PUZZLE 6.** 33. ... Ne7! Defense before offense! There is no good way to save the a2-pawn now. Not 33. ... Ne5?! 34. Qb7+ Kg8 35. Qb8+ Kh7 36. Qa7+ picking up the a5-pawn while defending the a2-pawn.; It is unwise to play with fire, as 33. ... Qxa2?! 34. Qxc6+ Ke7 35. Bh4!? Bxh4 36. Qxc6 Qf2 37. Qc5+ is tricky, but ends in a draw. 34. Kh3 Passive defense with 34. Qb1 allows 34. ... a4 when 35. Nd3 Nd5 36. f4 Nc3 overloads the queen, as the d3-knight is loose. 34. ... Qxa2 The king is safe and the passers win. (Salem – Woodward, New York, 2024)