

FIDE WORLD RAPID & BLITZ, PT. 2

WEDNESDAY WORKOUT ■ JANUARY 29, 2025

BY JJ LANG

PUZZLE 1.



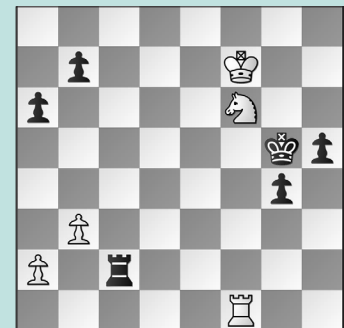
WHITE TO MOVE

PUZZLE 2.



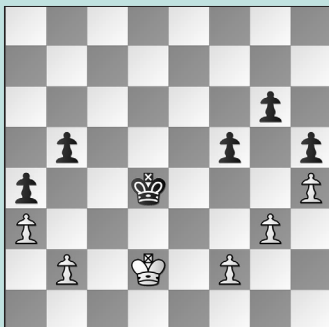
WHITE TO MOVE

PUZZLE 3.



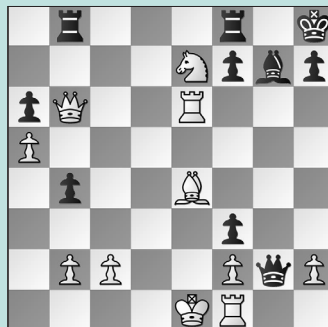
BLACK TO MOVE

PUZZLE 4.



BLACK TO MOVE

PUZZLE 5.



WHITE TO MOVE

PUZZLE 6.



WHITE TO MOVE

SOLUTIONS

PUZZLE 1. 41. Qh3+ White uncorks a simplification tactic! 41. ... Nh4 42. Qxh4+ Rh6 43. Nf7+ Not 43. Qxh6+??, as 43. ... Qxh6+ is check! 43. ... Kh7 Or 43. ... Qxf7 44. Qxh6+ leaves White four-pawns up. 44. Qxh6+ Qxh6+ 45. Nxf6 With a won endgame. (Hardaway – Suleymanli, New York, 2024) **PUZZLE 2.** 27. Rad1 A killer quiet move! 27. ... Rxd1 28. Rxd1 Qxc5 Black's best defense was 28. ... Qf4 but 29. Qd3 favors White. 29. Qg4! White's queen coordinates with the bishop against the e6-pawn, hammering the g7-square for good measure too. 29. ... Ke8 30. Qg6+ Kf8 31. Qxe6 Qe7 32. Rd8+ and Black resigned. (Woodward – Anton, New York, 2024) **PUZZLE 3.** 54. ... g3 Passed

pawns must be pushed! 55. Ne4+ The most testing. After 55. Ke6?! g2 56. Ne4+ Kg4 57. Rf5 Re2, refuting the intended Rf5-g5+ skewer against the g1-square, White resigned. 55. ... Kg4 56. Nf6+ Kh3 57. Nxf5 Rf2+! The knight is too slow. (Chirila – Adewumi, New York, 2024) **PUZZLE 4.** 56. ... Ke4! Unfortunately Andy missed a win with this sequence! The game concluded 56. ... Kc4 57. Kc2?? Kd4 58. Kd2 Ke5? with a handshake. 57. Ke2 f4 58. gxf4 Anything else concedes the f3-square. 58. ... Kxf4 Black threatens ... Kf4-g4, winning, but 59. f3 Kg3 changes nothing. (Gelfand – Woodward, New York, 2024, analysis) **PUZZLE 5.** 31. Rh6!! These are supposed to be highlights of the young Americans' best moments,

but this missed opportunity from Tani's opponent is too disgusting to not include. After 31. Bxf3? Rxb6 32. axb6 Qxf3 33. Re3 Qb7 he indeed went on to win. 31. ... Bxb6 Not 31. ... Rxb6 32. Rxh7 mate; or 31. ... f5 but 32. Ng6+ forces Black to lose the queen due to 32. ... Kg8 33. Bd5+ Rf7 34. Qxb8+ Bf8 35. Qxf8 mate. 32. Qxh6 f5 33. Bxf3! Most convincing. (Kevlishvili – Adewumi, New York, 2024, analysis) **PUZZLE 6.** 31. Qf6! White finds the only non-losing move. 31. ... Bg5 The point is 31. ... Qxe1?? 32. Nf5 mate; Or 31. ... Bg4 32. Be6! 32. ... Bh3 (or 32. ... Bxe6 33. Qxe6 Qxe1 34. Qh3+! Kg7 35. Qd7+ with a perpetual) 33. Bxh3 Qxe1 34. Nf5+ draws. 32. Qf1! Rd8 33. Bd5 Equal, White went on to win! (Hardaway – Kevlishvili, New York, 2024)