

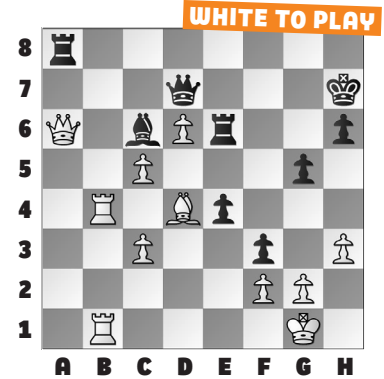
2024 WORLD RAPID & BLITZ, PT. 2

We continue our series on the **2024 FIDE World Rapid & Blitz Championships** by highlighting a trio of youngsters who shined in the

spotlight: GM Andy Woodward (14), GM-Elect Brewington Hardaway (15), and FM Tani Adewumi (14). Hardaway boasted a 2603 performance rating in the Rapid, and Tani was close behind at 2589. In blitz, Woodward clocked in at 2686.

In our **example**, Hardaway found a stunning way to break through Black's blockade with **38. Qb7!** as **38. ... Bxb7 39. Rxb7 Ra7 40. Rxd7+ Rxd7** regained the queen. Now, best was **41. c6!**, but, 41. Rb6!? Re8 42. Be3 Kg6 43. Rb4 preserved enough of an edge to win

in Hardaway – Bezold. Now **41. ... Rxd6 42. c7 Rc6 43. Rb6!** wins.



1. BLACK TO PLAY

A B C D E F G H

2. WHITE TO PLAY

A B C D E F G H

3. WHITE TO PLAY

A B C D E F G H

4. BLACK TO PLAY

A B C D E F G H

5. WHITE TO PLAY

A B C D E F G H

6. WHITE TO PLAY

A B C D E F G H

SOLUTIONS

1) 50. ... Qd2+ Black removes the second defender from the knight. **51. Kf1 Qxd1+ 52. Qxd1 Rxd1+** Black managed to win the piece-up endgame, despite only one pawn remaining. (Durarbayli – Woodward, New York, 2024) **2) 33. Qg6** Here, Black resigned, as **33. ... Bf8 34. Rf7!** is lights out. (Adewumi – Indjic, New York, 2024) **3) 28. Rh4** There is no good way to defend the h7-pawn. **28.**

... Ne3 29. Rf2 Do not hurry! The game continued: **29. ... Ra1 30. Qxh7+ Kf8 31. Rf4 Nf5 32. Bh4 Ke8 33. Qg8+** when **Black resigned**. (Woodward – Sharshenbekov, New York, 2024) **4) 44. ... Rd1+** Black proves that White's king was more vulnerable: **45. Kh2 Qe4** Without any checks, **White resigned**. Note: **46. f3 Qe2+ 47. Kh3 Rh1** is mate. (Volokitin – Hardaway, New York, 2024) **5) 50. ... Ne5** Interference! **51. a5 e1=Q** and Black won soonafter.

(Zhalmakhanov – Adewumi, New York, 2024) **6) 29. Qa3!** Instead, White played 29. Kg2 and after 29. ... Bd7 the position was equal and the game was eventually drawn **29. ... Bxf4** The key response. **30. gxf4** Black still cannot defend all three hanging pieces. Note: 30. Qxa4? Bxd2 was a problem. **30. ... Qxf4 31. Qxc5 Qxd2 32. Qxf8 Qxe1+ 33. Kg2** The checks ran out, and mate will come soonafter. (Hardaway – Theodorou, New York, 2024, analysis)