

FIDE WORLD RAPID & BLITZ, PT. 1

WEDNESDAY WORKOUT ■ JANUARY 22, 2025

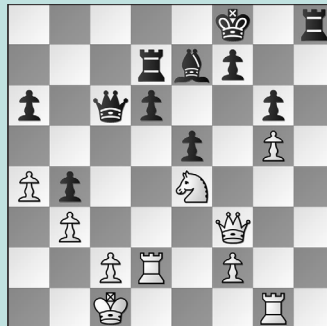
BY JJ LANG

PUZZLE 1.



WHITE TO MOVE

PUZZLE 2.



WHITE TO MOVE

PUZZLE 3.



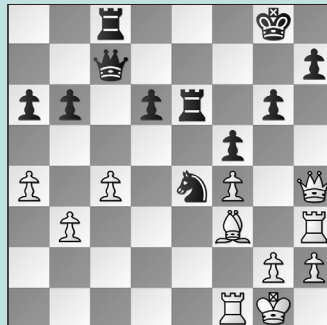
WHITE TO MOVE

PUZZLE 4.



BLACK TO MOVE

PUZZLE 5.



BLACK TO MOVE

PUZZLE 6.



BLACK TO MOVE

SOLUTIONS

PUZZLE 1. 18. **Nxe7+** Also good, but less direct, was 18. **Nxc7!**? **Qxc7** 19. **exd6** winning material. 18. ... **Qxe7** 19. **exd6** Revealing the bishop against the g7-square. 19. ... **cxd6** 20. **Ng5** If the rook moves, the queen will be overloaded defending the e6-bishop and g7-square. 20. ... **Ne5** 21. **Nxf7 Bxf7** 22. **c5** Blasting through. (Yip – Lee, New York, 2024) **PUZZLE 2.** 28. **Rh1** Does it count as a “quiet move” when it sets up a mate threat? 28. ... **Rxh1+** If 28. ... **Rg8** then 29. **Rh7 Rg7** 30. **Rh8+ Rg8** 31. **Rxg8+ Kxg8** 32. **Nf6+ Bxf6** 33. **Qxc6** wins Black’s queen. 29. **Qxh1 Kg7** 30. **Qh6+ Kg8** 31. **Nf6+** and **Black resigned.** (Yip – Garifullina, New York, 2024) **PUZZLE 3.** 28. **Rg1** The same move, with a

similar point, as the previous puzzle! 28. ... **Rxg1** The ugly 28. ... **Rh8** loses to 29. **f7** trapping the rook. 29. **Rxg1** With **Rg1-g8** coming, **Black resigned** shortly. (Yip – Kiolbasa, New York, 2024) **PUZZLE 4.** 55. ... **Ba8!** Compare to 55. ... **Bd5** when 56. **Kc5!** breaks the pin, allowing 56. ... **Ba8** 57. **Rd1 h4** 58. **Rd8 Bg2** 59. **Bc4!** h3 60. **Rd5!** holding; In the game, Yip played 55. ... **Be4** but still went on to beat the reigning world champ: 56. **Re1 Bg2??** 57. **Rg1??** Both players overlooked 57. **Re2!!** in the time scramble: 57. ... **Rxe2** 58. **Bxe2 h4** 59. **Bg4!** **Kg5** 60. **Bc8** when White wins. After 57. ... **Ba8!**, Black won. 56. **Rd1 h4** 57. **Rd8 Bg2** 58. **a8=Q Bxa8** 59. **Rxa8 h3** 60. **Rh8 h2** The pawns beat the bishop. (Ju – Yip, New York, 2024, analysis) **PUZZLE 5.** 32.

... **Qc5+** Black played the safer 32. ... **Nf6** and went on to win later. 33. **Rf2** Not 33. **Kh1 Nf2+** 34. **Qxf2 Qxf2** 35. **Rxf2 Re1+** 36. **Rf1 Rxf1** mate. 33. ... **h5!** The key move. Black would have loved to play 33. ... **Nxf2** if not for 34. **Qxh7+** winning, while 33. ... **Qxf2+** 34. **Qxf2 Nxf2** 35. **Kxf2 Re7** 36. **Bd5+** looked hard to crack. 34. **Bxe4 Rxe4** 35. **Kf1** Or 35. **g3 Re1+** 36. **Kg2 Qc6+** mates. 35. ... **Rce8** The king is toast! (Mou – Yip, New York, 2024, analysis) **PUZZLE 6.** 30. ... **Rc3!** Threats of ... **Rc3xd3** and ... **Ng5xe4** are fatal. After 30. ... **Rc5** White consolidated shortly. 31. **Nxc3 Qxf4.** 32. **Nxb5 Rc8!** A tough move to spot from afar, and better than the immediate 32. ... **Nxe4!** 33. **Bxe4 Qxe4** 34. **Nxd6** when White has chances. (Tan – Yip, New York, 2024, analysis)