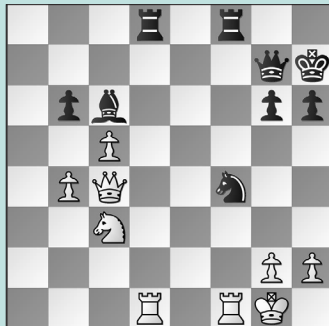


FIDE WORLD CADET CHAMPS, PT. 1

WEDNESDAY WORKOUT ■ DECEMBER 11, 2024

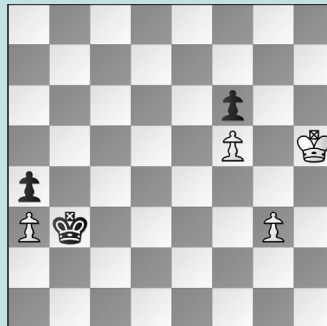
BY JJ LANG

PUZZLE 1.



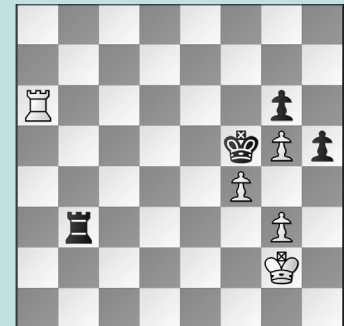
WHITE TO MOVE

PUZZLE 2.



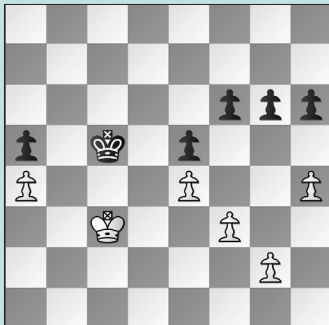
WHITE TO MOVE

PUZZLE 3.



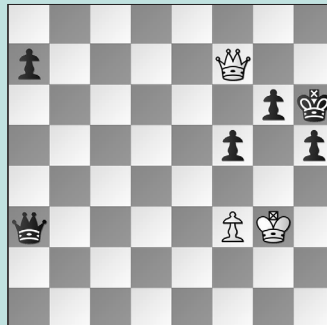
WHITE TO MOVE

PUZZLE 4.



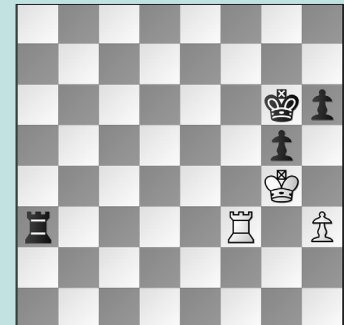
BLACK TO MOVE

PUZZLE 5.



WHITE TO MOVE

PUZZLE 6.



BLACK TO MOVE

SOLUTIONS

PUZZLE 1. 31. Rxf4! White had to remove the f4-knight. Instead, 31. Rxd8 allowed the spectacular 31. ... Qxc3! 32. Qa2 Nh3+! 33. gxh3 Qe3+ winning. 31. ... Rxf4 32. Qxf4 Rxd1+ 33. Nxd1 White is a bit better. (Li – Guo, Italy, 2024, analysis) **PUZZLE 2.** 48. g4 The only win! 48. ... Kxa3 49. g5 fxg5 50. f6 No time to recapture! 50. ... Kb2 51. f7 a3 52. f8=Q a2 Black's extra pawn turns a draw into a win for White! 53. Qb4+ Ka1 54. Qb3! No stalemate! 54. ... g4 55. Qc2 g3 56. Qc1 mate. (Li – Mani, Italy, 2024) **PUZZLE 3.** 68. Kh3! Re3 This allows a trade, but Black was lost regardless. 69. Rf6+ Ke4 70. Re6+ Since 70. f5 was also winning, it didn't matter whether Black's

rook was on the e-file. 70. ... Kf3 71. Rxe3+ Kxe3 72. f5 gxf5 73. g6 White went on to win. (Badescu – Nguyen, Italy, 2024) **PUZZLE 4.** 40. g3! With kings in opposition, each side looks for "waiting moves." 40. ... f5?? Simplest was 40. ... h5 when 41. g4 lets Black hold after 41. ... Kd6 (or 41. ... Kb6) 42. Kc4 Kc6 and White can't progress. 41. h5! After 41. exf5? gxf5 42. g4 fxg4 43. fxe4 Kd5 44. Kd3 the position was drawn. 41. ... fxe4 Or 41. ... g5 42. exf5 Kd6 43. Kc4 Kc6 44. f6 wins. 42. hxg6 exf3 43. Kd2 Or 43. Kd3 wins. (Nguyen – Nguyen, Italy, 2024, analysis) **PUZZLE 5.** 42. Qf6! Singh pushed White to the brink, but Black's passive pieces gave White a chance! Instead, after 42. Qd7 h4+ 43. Kf2 Qc5+ 44. Kg2 Qc2+ 45. Kf1

h3, Black won shortly. 42. ... a5 What else? 43. Qh8+ Kg5 If the f3-pawn weren't pinned, f3-f4 would be mate! Instead, 44. Qd8+ Kh6 45. Qh8+ allows White to escape with a perpetual. (Tuguldur – Singh, Italy, 2024, analysis) **PUZZLE 6.** 66. ... h5+! Black erred with 66. ... Rxf3 67. Kxf3 Kf5 68. Ke3 If 68. Kg3 Ke4 White draws with either 69. Kg4 or 69. h4, with neither resource possible had Black's h-pawn already advanced with ... h6-h5. 68. ... h5 69. Kf3 White draws. 67. Kg3 Rxf3+ 68. Kxf3 Kf5 69. Kg3 Or 69. Ke3 Ke5 70. Kf3 Kd4! wins. 69. ... Ke4 White can keep diagonal opposition, but after 70. Kg2 Kf4 71. Kf2 h4 Black's tempo-gaining move secures the win. (Xia – Karaman, Italy, 2024, analysis)