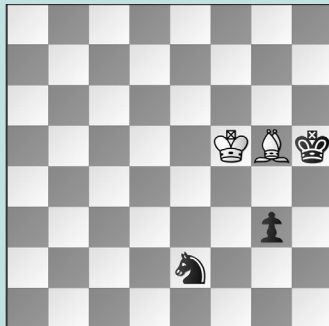


FIDE WORLD YOUTH CHAMPS, PT. 2

WEDNESDAY WORKOUT ■ DECEMBER 04, 2024

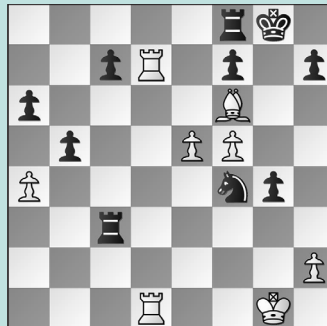
BY JJ LANG

PUZZLE 1.



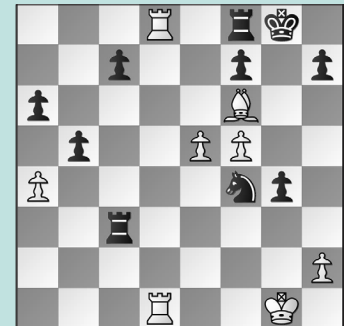
BLACK TO MOVE

PUZZLE 2.



WHITE TO MOVE

PUZZLE 3.



BLACK TO MOVE

PUZZLE 4.



BLACK TO MOVE

PUZZLE 5.



BLACK TO MOVE

PUZZLE 6.



WHITE TO MOVE

SOLUTIONS

PUZZLE 1. 69. ... Nd4+ An important *intermezzo*, as 69. ... g2?? 70. Be3 holds. **70. Kf6 Kg4** Not the only win, but Black showed good technique: **71. Be3 Nc2 72. Bg1 Ne1 73. Ba7 Nd3 74. Kg6 Nf2** Black wins. (Chasin – Droin, Brazil, 2024) **PUZZLE 2. 32. Rd8?**, which you can refute in the next puzzle. But with **32. e6!**, the threats of Bf6xc3 and e6-e7 are too much. **32. ... Nh3+ 33. Kg2 Rc2+ 34. Kg3** The e6-pawn cannot be captured due to Rd7-g7+ with a windmill. (Tabermakova – Nurgaliyeva, Brazil, 2024, analysis) **PUZZLE 3. 32. ... Rc1!** Black avoids the threat of e5-e6 with threats of a fork on the e2-square before White can play Rd8xf8+ and Rd1-d8 mate. (Taber-

makova – Nurgaliyeva, Brazil, 2024) **PUZZLE 4. 40. ... Rf6+** After **40. ... Qf5+ 41. Qf3 Qxf3+ 42. Kxf3 Rd6**, Black won the d7-pawn but White's active king and second passed d-pawn secured an equal game. **41. Kg3** Even worse, 41. Ke2 Qf1+ 42. Kd2 Rf2+ forces White to part with the queen. **41. ... Qg6+!** A decisive backwards move! **42. Kh4 Qh7+ 43. Kg4** Worse is 43. Kg3 Qg7+ as there is no Qe3-g5 interposition: 44. Kh3 Rh6+ wins. **43. ... Qf5+** With queens still on, Black can grab the d7-pawn and maintain a winning advantage. (Negre – Imomkuzieva, Brazil, 2024, analysis) **PUZZLE 5. 29. ... Nd3!** Instead, Black lost with **29. ... Bb7** when White had time for **30. Bc3 Ba8 31. Qb2** pinning the knight to the b8-square.

30. Rb6 Forking the a6-bishop and c6-pawn is White's best try, as 30. Qe4 Nxc5 31. Qxc6+ Qc7 32. Qxc7+ Kxc7 33. dxc5 Rd3+ gives Black even more compensation. **30. ... Nxc5 31. Rxc6+ Kb7 32. Rxc5 Rc8!** Black has compensation for the pawn. (Nurgaliyev – Mamedov, Brazil, 2024, analysis) **PUZZLE 6. 39. Bg5!!** White lost after **39. Bh8 b3 40. e6 f6** when the bishop is shut out. **39. ... b3** If Black slow-plays it with 39. ... Rb5 then 40. Bc1 Rxe5 41. Bh6+! (not 41. Rxb4?? Re1+ winning the bishop) 41. ... Ke7 42. Rxb4 is still equal. **40. Bh6+** Note: 40. Bc1?? b2 41. Bxb2 Rxb2 42. Rh4 Ng7 loses. **40. ... Ke7 41. Bc1 b2 42. Bxb2 Rxb2 43. Rh4** Black's knight is trapped, as ... Nh5-g7 fails to f5-f6+! (Tabermakova – Nurgaliyeva, Brazil, 2024, analysis)