

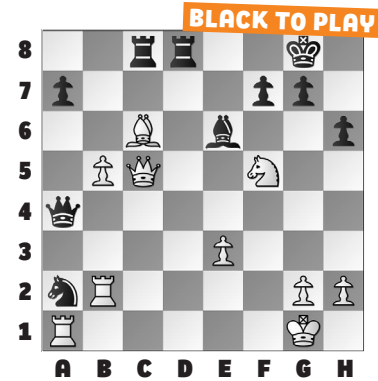
### WORLD YOUTH CHAMPS, PT. 2

This week's exercises again come from the **2024 FIDE World Youth Championships**, played last month in Brazil. This week's theme is,

sometimes, offense is the best defense. When our opponent is making a threat, look for more forcing threats of your own.

In our **example**, White threatens Nf5-e7+, but Black ignored it with **32. ... Rd1+** **33. Rxd1 Qxd1+** **34. Kf2** by playing **34. ... Nc1!** as Black threatens a stronger fork! After **35. Ne7+ Kh8** **36. Kg3**, White does not have time for 36. Nxc8 due to 36. ... Nd3+ winning the queen. But now after **36. ... Qg4+**, White resigned

in Khubukshanov – Sahakyan, as ... Nc1-d3+ wins the queen next turn.



**# 1. WHITE TO PLAY**

**# 2. BLACK TO PLAY**

**# 3. BLACK TO PLAY**

**# 4. WHITE TO PLAY**

**# 5. BLACK TO PLAY**

**# 6. WHITE TO PLAY**

### SOLUTIONS

**1) 38. Bd6+** White removes the guard of the f8-rook. **38. ... Kxd6** **39. Rxf8** Up an Exchange, White went on to win. (Singh – Kiet, Brazil, 2024) **2) 32. ... Qxd2+** Other moves also won, but Black forces mate after **33. Kb1 Rxe1** when mate is inevitable, as the f2-rook still covers the f8-square. (Imomkuzieva – Khafizova, Brazil, 2024) **3) 38. ... Ne3+** Black forces mate from here. Time is of the essence, as Rf8-h8+ is

a mating threat from White. **39. Kf3** Alternatives: 39. Kg1 Rd1 mate; Or 39. Kh3 Qh5 mate. **39. ... Qh5+** when **White resigned** due to **40. Kxe3 Qe2** mate. (Sahakyan – Razafindratsima, Brazil, 2024) **4) 28. Be5** Decisive! **Black resigned**, as the e4-knight is pinned. **28. ... Nd2** Too slow is 28. ... f6 as 29. Bxe4 hits Black's queen. **29. Qh7+ Kf8** **30. Bf6!** The fastest way to force mate. (Smietanska – Hipparagi, Brazil, 2024) **5) 23. ... Nb4** White's queen is short on

squares. **24. Qa3** Or 24. Qd6 loses to 24. ... Bf5+ 25. Kc1 (or 25. Ka1 Nc2+ 26. Kb1 Nxe1+ wins) 25. ... Nxa2+ forces 26. Kd2 hanging the queen. **24. ... Ra8** **25. Na5 Bf5+** **26. Kc1 Qc5** Black's queen next comes to the f2-square with mate threats, winning shortly (Qi – Preobrazhenskaya, Brazil, 2024) **6) 24. Rh3!** Ignoring the threat on the c4-bishop! **24. ... g5** **25. Qh8+** and **Black resigned**, as Rh3xh8 mates next. (Preobrazhenskaya – Feng, Brazil, 2024)