

FIDE WORLD YOUTH: SUBTLE NUANCES

WEDNESDAY WORKOUT ■ NOVEMBER 27, 2024

BY JJ LANG

PUZZLE 1.



WHITE TO MOVE

PUZZLE 2.



BLACK TO MOVE

PUZZLE 3.



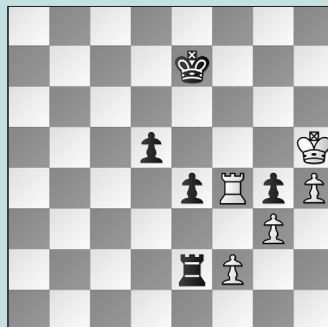
WHITE TO MOVE

PUZZLE 4.



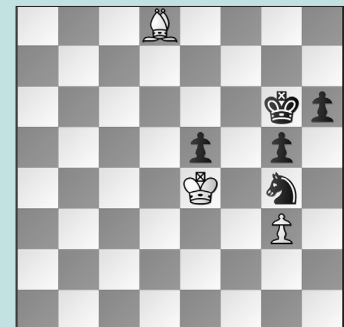
BLACK TO MOVE

PUZZLE 5.



WHITE TO MOVE

PUZZLE 6.



BLACK TO MOVE

SOLUTIONS

PUZZLE 1. 16. Nd5 17. exd5 White wins material. (Chasin – Suresh, Florianopolis, 2024) **PUZZLE 2.** 25. ... exf2+ Black resigned shortly after 25. ... Nc3? 26. Bxf7+ Kf8 27. fxe3 Be7, as 27. ... Nxd1 28. Bb4+! Be7 29. Bxe7+ Kxf7 30. Bxd8+ won. 26. Kxf2 Rxe8 Black has two pawns for the Exchange. (Sowinski – Vemparala, Florianopolis, 2024, analysis) **PUZZLE 3.** 34. Rdc2! After 34. Rc7? Rbb8! White lost material. 34. ... Nxc1 35. Rxc1 Rxb2 36. Nb6 But wait! The a8-rook is stuck on the back rank, so Black has nothing better than 36. ... Rxb6 37. Bxb6 when White is fine. (Gaw – Zhapova, Florianopolis, 2024, analysis) **PUZZLE 4.** 33. ... c4! After 33. ... Rf5

34. Qg7+ Kd8 35. Re3 White had a winning attack. 34. fxe5 White is a tempo too slow. The direct 34. Qd4?? Loses to 34. ... cxd3 35. fxe5 Qb6! trading queens. 34. ... cxd3 35. exd6+ Qxd6 36. Qxc8 Qd4+ Black forces a draw. (Preobrazhenskaya – Klinecicz, Florianopolis, 2024, analysis) **PUZZLE 5.** 60. Kg5!! White wins by force. White blundered with 60. Rxc4?? allowing Black to create faster connected passers after 60. ... Rxf2 61. Rg7+ Ke6 62. Rg8 d4 when Black went on to win. 60. ... d4 Although Black promotes first, the d1-queen will lack checks. If 60. ... e3 61. fxe3 Rxe3 62. Kxg4 wins by keeping Black's rook off the h-file. 61. h5 d3 62. h6 d2 63. h7 d1=Q 64. h8=Q Black has no defense. (Jiang – Vemparala, Florianopolis, 2024, analysis)

65. ... Kg7!! A remarkable *zwischenzug*. The point is to wait on ... h6-h5 as to open up ideas of ... Kg7-f6-e6 to keep the e5-pawn protected. The immediate 59. ... h5 would have allowed a draw after 60. Bc7! when Black cannot play ... Ng4-f2+h1 to win the g3-pawn due to Bc7xe5, but 60. ... Kf6 fails to 61. Bd8+ when Black must return to the g6-square. Instead White lost with 60. Be7 Nf2+ 61. Kf3 Nd1 62. Ke4 Nc3+ 63. Kxe5 Ne2 when the g-pawn drops. 60. Bc7 Alternatively, 60. Kf5 Ne3+ 61. Kxe5 Nf1 62. g4 Kg6! erects a barrier and the g-pawn drops next. 60. ... Kf6 61. Bd8+ Ke6 White is in *zugzwang*, since White allows ... h6-h5 after bishop moves or ... Ke6-f5 after king moves. (Chasin – Droin, Florianopolis, 2024, analysis)