

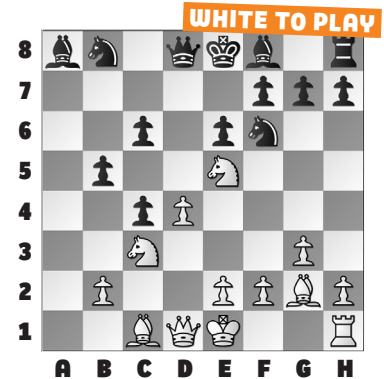
### FIDE WORLD YOUTH CHAMPS

This week's puzzles come from the **2024 FIDE World Youth Championships**, held earlier this month in Florianopolis, Brazil.

Studying youth tournaments is valuable because players try to apply principles but do not always succeed in doing so.

In our **example**, both players knew that loose pieces drop off (LPDO). Only Black, however, factored in king safety, looking one move deeper than her opponent. White only saw the hanging a8-bishop and played **11. Nxb5??** using the pin on the c6-pawn to meet **11. ... cxb5** with **12. Bxa8**. But, after **12. ... Qa5+**, it was *her* hanging bishop

on the a8-square that dropped off in Koghuashvili – Goriachkina.



**# 1. BLACK TO PLAY**

**# 2. BLACK TO PLAY**

**# 3. WHITE TO PLAY**

**# 4. BLACK TO PLAY**

**# 5. WHITE TO PLAY**

**# 6. WHITE TO PLAY**

### SOLUTIONS

**1) 34. ... Rxe1+** Black uses the weakness on the dark squares to force mate in three. After **35. Bxe1 Bd4+**, **White resigned**. (Mgeladze – Khafizova, Florianopolis, 2024)  
**2) 44. ... Qb2+** The only winning move! **White resigned**, as **45. Ka4 Qa2+** wins the queen. (Durana – Tabuenca, Florianopolis, 2024) **3) 39. Re8+** It's not mate, but forcing the king onto the b1-h7 diagonal helps our bishop create threats.

**39. ... Kh7 40. Rxe4** Here, **Black resigned**, as **40. ... Rxe4 41. Bd3** wins. (Raczek – Bolat, Florianopolis, 2024) **4) 28. ... Rh1+** Consider all forcing moves, starting with checks! **White resigned**, as **29. Kxh1** is forced, but **29. ... Nxb3+** exploits the “coordinated” king and queen. (Da Costa – Smietanska, Florianopolis, 2024) **5) 32. Qxe7** Black's queen and king are now a forkable distance apart! **32. ... exf4** If **32. ... Qxe7** 33. Ng6+ wins a full piece. **33. Qxf6!**

The endgame is better than 33. Qe8+ Kh7 when White has no mate but Black has more play. (Starosta – Kamarova, Florianopolis, 2024) **6) 42. Qg4+** Down material, White needs to find the forced mate here. Not **42. Rg3+** when **42. ... Kh6!** leaves White out of checks! **42. ... Kh7 43. Qh5+ Kg7 44. Rg3+** Forcing Black's king to the center puts the c- and d-pawns to use. **44. ... Kf6 45. Qg5+ Kf7 46. Qg7+ Ke8 47. Qd7** mate. (Ansar – Chyzy, Florianopolis, 2024)