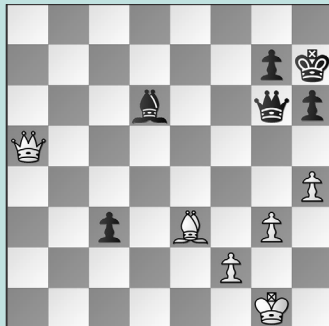


2023 CHAMPIONSHIP LOOKBACK

WEDNESDAY WORKOUT ■ NOVEMBER 20, 2024

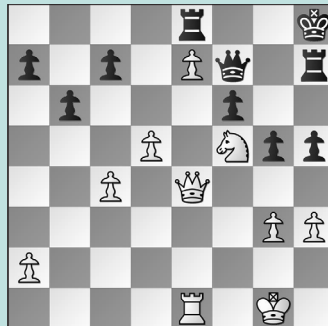
BY JJ LANG

PUZZLE 1.



BLACK TO MOVE

PUZZLE 2.



WHITE TO MOVE

PUZZLE 3.



BLACK TO MOVE

PUZZLE 4.



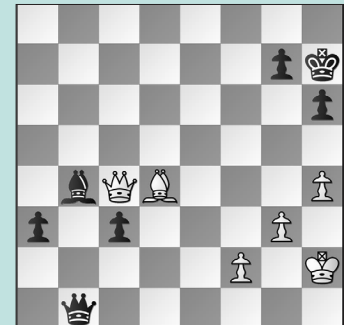
WHITE TO MOVE

PUZZLE 5.



WHITE TO MOVE

PUZZLE 6.



WHITE TO MOVE

SOLUTIONS

PUZZLE 1. 55. ... **Bxg3!** With seconds on the clock in the final tiebreaker, Ding missed a quicker end. 56. **h5 Qd3!** Defending the c-pawn and keeping the attack on White's bishop! (Nepomniachtchi – Ding, Astana, 2023, analysis) **PUZZLE 2.** 37. **d6! cxd6 38. Nxd6 Qg8** Black returns the Exchange and remains pawn-up, but the pressure is too strong. Too slow is 38. ... **Rxe7 39. Nxf7+** with check! 39. **Nxe8 Qxe8 40. Qe6!** There is no good way to save the f6-pawn as Black's queen must blockade. 40. ... **Kg7 41. Rf1 Rh6 42. Rd1** White went on to win. (Ding – Nepomniachtchi, Astana, 2023) **PUZZLE 3.** 48. ... **Qd3!** The c-pawn advances! 49. **Qf3** If 49. **Qh3 c3** Black's pawn

comes through with ... **Bb4-a3** next. 49. ... **Bd2!** Cleanest. Instead, Black played 49. ... **Rf6?!** and still won. 50. **Rd1 c3** The c-pawn is frozen, but the a-pawn can be the hero. (Nepomniachtchi – Ding, Astana, 2023, analysis) **PUZZLE 4.** 42. **Qc7!** Forced mate incoming! The d5-pawn takes away the escape square on e6 for Black's king. 42. ... **Kh7 43. Ng6 Rg8 44. Qf7!** Now, **Qf7xg8+** is coming with what WGM Jennifer Yu described as a "beautiful" forced mate. (Nepomniachtchi – Ding, Astana, 2023) **PUZZLE 5.** 29. **Rxd4!** A positional decision. GM Elshan Moradiabadi described what followed as "an immaculate technical display by Ding." 29. ... **cxd4 30. Nb3 g5?! 31. Nxd4 Qg6 32. g4!** An astute find, securing the f5-square for the knight and

fully justifying the sac. (Nepomniachtchi – Ding, Astana, 2023) **PUZZLE 6.** White's final chance to force "Double OT," and he had two options. 59. **h5** Moradiabadi admits 59. **Bxg7** may have been too complex to calculate over the board, but suggested this alternative was "very simple and intuitive." Moradiabadi described 59. **Qc7???** as "functionally resigning."; The other line is 59. **Bxg7 Kxg7 60. Qc7+** when White indeed has a perpetual. 59. ... **Bf8** The point is 59. ... **a2?? 60. Qf7** and suddenly White is giving mate! 60. **Qf7!** Black can't hang on to both passers, so White equalizes! 60. ... **Qe4 61. Bxc3** Black can defend with ... **Qe4-e7**, but the a-pawn has been frozen and so White holds. (Nepomniachtchi – Ding, Astana, 2023, analysis)