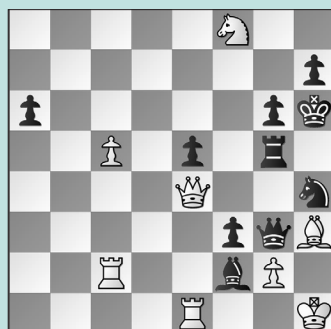


2024 U.S. CHAMPIONSHIPS, PT. 1

WEDNESDAY WORKOUT ■ NOVEMBER 06, 2024

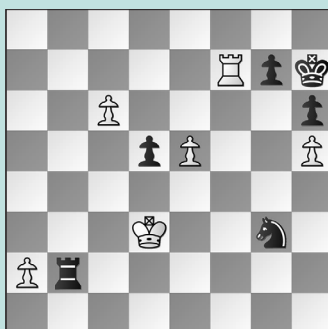
BY JJ LANG

PUZZLE 1.



WHITE TO MOVE

PUZZLE 2.



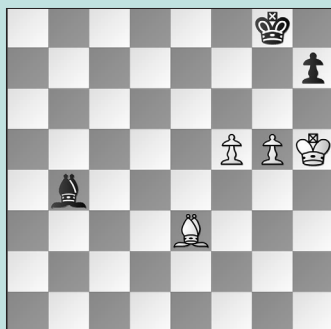
BLACK TO MOVE

PUZZLE 3.



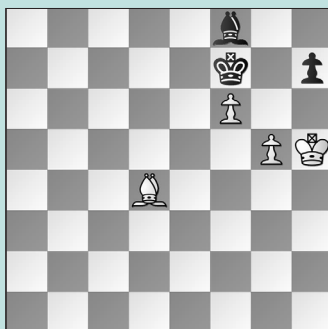
WHITE TO MOVE

PUZZLE 4.



BLACK TO MOVE

PUZZLE 5.



WHITE TO MOVE

PUZZLE 6.



WHITE TO MOVE

SOLUTIONS

PUZZLE 1. 1. Qb7! fxc2+ There is no other defense, as 63. ... Rh5 64. Qxh7+ Kg5 65. Ne6+ Kf6 allows 66. Qg7 mate. **64. Bxg2 Rh5!** If 64. ... Qxg2+ 65. Qxg2 Rxc2 66. c6 wins. **65. Qxh7+ Kg5 66. Ne6+** Instead, with **66. Qe7+ Kh6 67. Qh7+**, White repeated moves. **66. ... Kf6 67. Rxf2+ Nf5+ 68. Qxh5 gxh5** Or 68. ... Qxf2 69. Qh8+! wins. **69. Ref1 Kxe6 70. Rxf5** (Cervantes – Atwell, St. Louis, 2024, analysis) **PUZZLE 2. 45. ... Ne4** Black needs her rook on the c2-square to catch the c6-pawn. In the game, **45. ... Rb8? 46. c7 Rc8 47. Kd4 Nxh5 48. Kxd5** won for White. **46. c7 Rd2+ 47. Ke3 Rc2** White's king is off the c2-square, and Black now freezes White's rook on the seventh rank while

her knight chases down the a-pawn. **48. a4 Rc4! 49. a5 Nc3! 50. a6 Nb5** (Abrahamyan – Paikidze, St. Louis, 2024, analysis) **PUZZLE 3. 32. b5** Instead, White won back her Exchange with **32. c5** and went on to win. **32. ... Bd7 33. Nc5 Qc1+ 34. Rd1** (Tokhirjonova – Zatonskih, St. Louis, 2024, analysis) **PUZZLE 4. 73. f6** The game continued **73. Bd4? Bf8? 74. Bb6? Kf7? 75. Bd4! Kg8 76. f6 Kf7** when we reach the **next puzzle. 73. ... Bf8** Guarding the h6-square loses by force. Or 73. ... Kf8 74. Kh6 Kg8 75. f7+ is the same idea; Passing with 73. ... Bc3 allows 74. Kh6 Be5 75. f7+ again. **74. g6! hxg6+ 75. Kxg6** Threatening mate, and any move on the a3-f8 diagonal allows f6-f7+ and Be3-f8+. (Lee – Cervantes, St. Louis, 2024, analysis)

PUZZLE 5. 77. Be3! Instead **77. Bc3** allowed **77. ... Bc5 78. Kh6 Be3** drawing. **77. ... h6** If 77. ... Ke6, then 78. g6 Kxf6 (or 78. ... hxg6+ 79. Kxg6 Bd6 80. f7 wins) 79. Bd4+! dislodges Black's king. **78. g6+ Kxf6 79. Bc1!** Not 79. Bxh6?? Bg7 holding. **79. ... Ke6 80. Bxh6** (Lee – Cervantes, St. Louis, 2024, analysis) **PUZZLE 6. 31. Rg1!** After **31. Qxb7? Rh2+! 32. Kf1** Not 32. Kf3?? Ne5+ 33. Kf4 Nd3+ 34. Kf3 Rf2 mate. **32. ... Ne5!** After **33. Qb8+ Kh7 34. Qxe5 Rh1+ 35. Ke2 Rxa1** Black won. **31. ... Rh2+ 32. Kf1 Rf6+ 33. Ke1 Rff2 34. Qxb7** Or 34. Rh1 also works: 34. ... Rhg2 35. Rg1 and White repeats. **34. ... Re2+ 35. Kd1** Now Black must be precise to hold the draw, as the checks run out. (Oparin – Aronian, St. Louis, 2024, analysis)