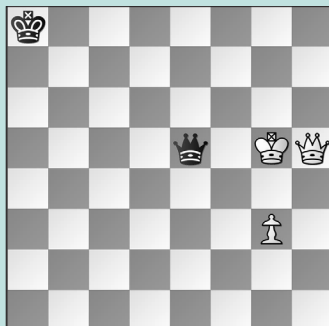


# 45TH FIDE OLYMPIAD, PT. 5

## WEDNESDAY WORKOUT ■ OCTOBER 30, 2024

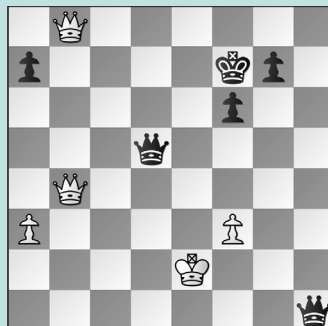
BY JJ LANG

### PUZZLE 1.



WHITE TO MOVE

### PUZZLE 2.



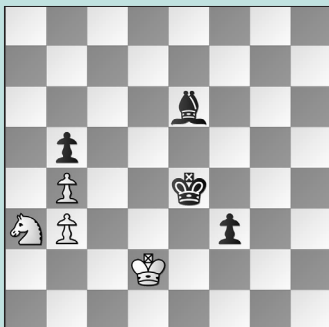
WHITE TO MOVE

### PUZZLE 3.



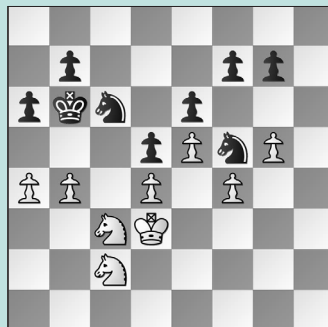
BLACK TO MOVE

### PUZZLE 4.



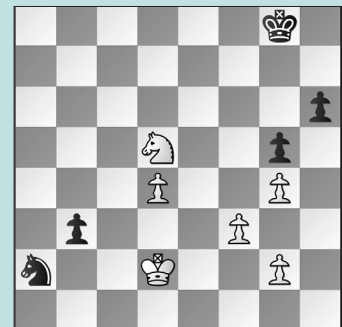
BLACK TO MOVE

### PUZZLE 5.



BLACK TO MOVE

### PUZZLE 6.



WHITE TO MOVE

## SOLUTIONS

**PUZZLE 1. 64. Kh4!** The only way to fight on, as 64. Kg4 Qe2+ 65. Kg5 Qd2+ 66. Kf5 Qc2+ goes nowhere. **64. ... Qe4+** **65. g4** We must advance the pawn! More detail is in the study. (Rodrigue-Lemieux – Christiansen, Budapest, 2024) **PUZZLE 2. 52. Q8f8+ Kg6** Or 52. ... Ke6 53. Qfe7+ Kf5 54. Qg4 mate **53. Qg4+ Qg5 54. Qe4+! Qf5** Alternatives get mated quicker: see the study online. **55. Qee8+! Kh6 56. Qh8+ Qh7 57. Qe3+ Kg6** Or 57. ... g5 58. Qxf6+ Qg6 59. Qexg5+ Kh7 60. Qxg6 mate. **58. Qhe8+! Kf5 59. Q8e4** Mate. (Zhu – Atalik, Budapest, 2024) **PUZZLE 3. 85. ... Kc3** Black had to settle for a draw after **85. ... Rh1+? 86. Kc2 Rh2+ 87. Kd1** having lost

the mating net. **86. Rg8** The first point is clearest after 86. Ka2 Rh2+ 87. Kb1 Kb3 when Black forces mate. **86. ... Rh1+ 87. Ka2 Rh2+ 88. Ka1 Rh7!** The wrinkle Black missed. **89. Rg3+** Or 89. Rg2 Ra7+ 90. Kb1 Nd2+ wins. **89. ... Kc2! 90. Rg2+ Nd2** Mate is inevitable. (Abdyzhapar – Zilka, Budapest, 2024, analysis) **PUZZLE 4. 58. ... Kf4!** Not only can Black sac the b-pawn; he must! After **58. ... Bd7? 59. Ke1! Ke3 60. Nc2+ Kd3** If 60. ... Kf4 61. Kf2, White can “plant” on the dark squares. But now **61. Na3 Kc3 62. Kf2! Kxb4 63. Nxb5 Bxb5 64. Kxf3! Kxb3** is drawn. **59. Nxb5 f2 60. Ke2 Kg3 61. Nd4** Or 61. Kf1 Bh3+ settles it. **61. ... Bh3** The pawn breaks through. (Livaic – Zhalmakhanov, Budapest, 2024,

analysis) **PUZZLE 5. 40. ... a5!** White has too many weaknesses. **41. bxa5+** If 41. b5 Nb4+ wins: 42. Nxb4 (or 42. Kd2 Nxc2 43. Kxc2 Nxd4+ and White crumbles) 42. ... axb4 43. Nd1 Other moves fail to defend the a4-pawn, but after 43. ... Ka5 44. Nb2 g6 White is in *zugzwang*. **41. ... Kxa5** Both knights are frozen. (Steil-Antoni – Guichard, Budapest, 2024) **PUZZLE 6. 52. Ne3!** White erred with **52. g3? Kf7 53. f4 gxf4 54. gxf4 b2 55. Kc2 Nc1! 56. Nc3 b1=Q+ 57. Nxb1 Ne2** although they later won. **52. ... Kf7 53. d5 Kf6 54. d6!** Not 54. Nf5?? b2! 55. Kc2 Nb4+ when Black holds. **54. ... Ke6 55. Nf5 Nb4** Or 55. ... Kd7 56. Nxb6 Kxd6 57. Nf7+ wins trivially. **56. Kc3 Nc6 57. Kxb3** White wins. (Alinasab – Tsolakidou, Budapest, 2024, analysis)