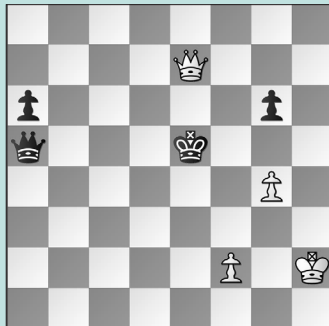


# FIDE OLYMPIAD: MORE ENDGAMES

WEDNESDAY WORKOUT ■ OCTOBER 23, 2024

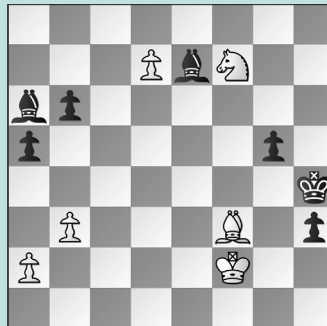
BY JJ LANG

PUZZLE 1.



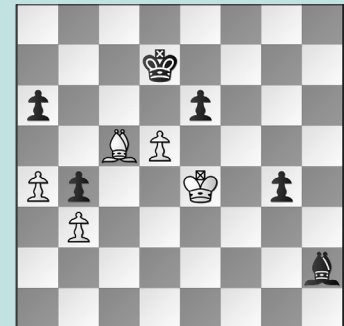
BLACK TO MOVE

PUZZLE 2.



WHITE TO MOVE

PUZZLE 3.



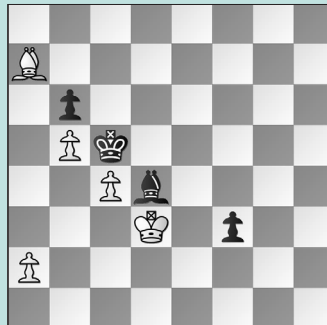
BLACK TO MOVE

PUZZLE 4.



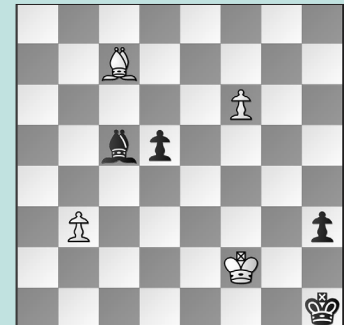
BLACK TO MOVE

PUZZLE 5.



WHITE TO MOVE

PUZZLE 6.



WHITE TO MOVE

## SOLUTIONS

**PUZZLE 1. 53. ... Kf4!** Black bravely walks towards the enemy camp, and it's the safest spot! If 53. ... Kd4? 54. Qe3+ Kc4 55. Qe4+ Kb3 (or 55. ... Kb5 56. Qe5+ Kb4 57. Qxa5+ Kxa5 58. f4+- loses) 56. Qe6+ Kb2 57. Qxg6 keeps winning chances for White. **54. Qe3+ Kxg4 55. Qh3+** With a draw. (Omar – Toczek, Budapest, 2024) **PUZZLE 2. 67. Ne5** White threatens Ne5-g6+, and it's unstoppable. **67. ... Bc5+ 68. Ke1 Bb4+ 69. Kd1** and **Black resigned** shortly. (Kazakouski – Donchenko, Budapest, 2024) **PUZZLE 3. 49. ... Bd6!** Move order matters! Black missed the win after **49. ... exd5+?? 50. Kxd5** because now **50. ... g3 51. Bd6** stops the pawn! **50. Bg1 exd5+ 51. Kxd5 g3** Black wins.

(Antonova – Cvitan, Budapest, 2024, analysis) **PUZZLE 4. 64. ... Na6!** Black identifies the key squares as c6 and d7. Instead **64. ... Ne6+?? 65. Ke5 Nc5 66. Ne4** won for White. after **66. ... Nb7** Or 66. ... Nd7+ 67. Ke6 Nb6 68. Nf6+ Kg6 69. Nd7 Na4 70. Ne5+ controls the key squares, so 70. ... Kg5 71. Kd5 Kf5 72. Kc6! wins. **67. d7 Kg6 68. Ke6 Nd8+ 69. Ke7 Nc6+ 70. Ke8 Kf5 71. Nd6+ Ke6 72. Nc4 Kd5 73. Na5** when White won. **65. Kf5 Nb8!** White cannot make progress. For instance: **66. Kf6 Kg4 67. Ke7 Kf5 68. Kd8 Ke6 69. Nb5 Nd7** and Black holds. (Alinasab – Tsolakidou, Budapest, 2024, analysis) **PUZZLE 5. 50. Bb8!** lost after **50. a4 f2 51. Ke2 Kb4!** Not 51. ... Kxc4 52. Bxb6 Bxb6 53. a5 with a draw. Now, **52. Bb8 Bc5 53. Bg3 Kxa4 54. Bxf2**

**Bxf2 55. Kxf2 Kb4 56. Ke3 Kxc4 57. Kd2 Kxb5 58. Kc3 Ka4** won. **50. ... f2 51. Ke2 Kxc4 52. Bg3 Kxb5 53. Bxf2 Bxf2** White is in time to "get back." **54. Kxf2 Ka4 55. Ke3 Ka3 56. Kd4 Kxa2 57. Kc4** White draws. (Milovic – Khotenashvili, Budapest, 2024, analysis) **PUZZLE 6. 72. Kg3** White missed the win with **72. Kf1? d4!** **73. Bd8 d3** and after **74. Be7? d2 75. Ke2 Kg2 76. Bxc5 h2**, Black even won! **72. ... h2 73. Kh3 d4 74. Bxh2 d3** White's bishop gets back just in time: **75. Bf4 Bb4 76. f7 Kg1 77. Kg3 Kf1 78. Bd2!** The key detail! White covers e1 and controls b4! Note that 78. Kf3? Ke1 79. Ke3 d2 80. Bg3+ Kf1 81. f8=Q+ Bxf8 82. Kxd2 is a draw. **78. ... Bf8 79. Kf3** The d-pawn drops, and White wins. (Milovic – Hanh, Budapest, 2024, analysis)