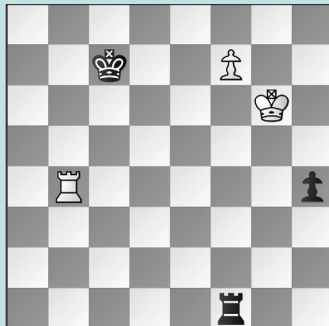


FIDE OLYMPIAD: ROOK ENDGAMES

WEDNESDAY WORKOUT ■ OCTOBER 16, 2024

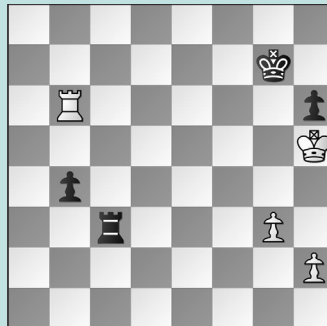
BY JJ LANG

PUZZLE 1.



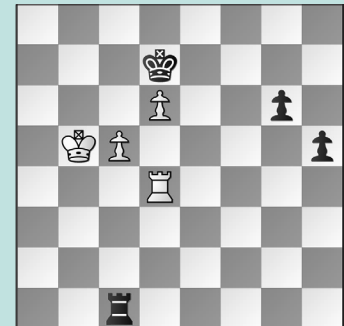
BLACK TO MOVE

PUZZLE 2.



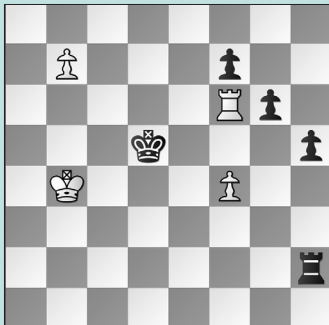
WHITE TO MOVE

PUZZLE 3.



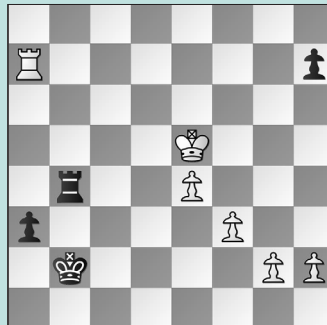
WHITE TO MOVE

PUZZLE 4.



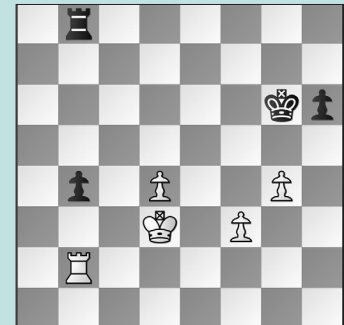
WHITE TO MOVE

PUZZLE 5.



BLACK TO MOVE

PUZZLE 6.



BLACK TO MOVE

SOLUTIONS

PUZZLE 1. 57. ... h3! White has no “Lucena” win. 58. Rh4 Rg1+ 59. Kh7 Rf1 60. Kg8 Rg1+ 61. Kf8 Rg3 Not the only move: 61. ... Rh1 works as well. 62. Ke7 Re3+ 63. Kf6 Rf3+ 64. Ke6 Re3+ 65. Kf5 Rf3+ 66. Kg6 Rg3+ 67. Kf5 Rf3+ 68. Rf4 Rxf4+ 69. Kxf4 h2 The point! 70. f8=Q h1=Q When a draw was agreed. (Maurizzi – Jobava, Budapest, 2024) **PUZZLE 2.** 55. Rb7+! Not 55. Rxh6?? Rc5+ grabbing the rook. 55. ... Kf8 56. Kxh6 Not 56. Kg6 Rc6+ 57. Kh5 Rc2 58. h4 Rc4 59. Kxh6 Rg4 with a draw. 56. ... Rc2 57. Rxb4 Rxh2+ 58. Kg6 Ra2 59. Rb8+! A key move. Not 59. g4 Ra8! 60. g5 Kg8 when Black uses “passive defense” to hold. 59. ... Ke7 60. g4 Ra6+ 61. Kg7 Not 61. Kf5 Kf7! cov-

ering the g6-square. 61. ... Ra5 62. Rb4 Re5 63. Rb7+ Ke8 Or 63. ... Ke6 64. Kg6 when g4-g5 is guaranteed. 64. Kf6 Winning. (Ushenina – Klinova, 2024) **PUZZLE 3.** 64. Ra4! White’s only winning strategy. After 64. Re4? Rb1+ 65. Kc4 Kc6! 66. Re8 Rc1+ 67. Kd4 Rd1+ 68. Kc4 Rc1+ the draw was in hand. 64. ... Rb1+ 65. Kc4 Rc1+ Now, if 65. ... Kc6 66. Ra6+ Kb7 (or 66. ... Kd7 67. Ra7+ Ke6 68. Re7+ Kf6 69. c6 wins) 67. d7 wins. 66. Kd5 Rd1+ 67. Ke5 Kc6 Or 67. ... Re1+ 68. Kf6 Rg1 69. Ra7+ wins. 68. Ke6! White has too many threats. (Donchenko – Amilal, 2024, analysis) **PUZZLE 4.** 60. Rd6+! White played 60. Kc3 but only played Rf6-d6+

Rc2+ 63. Kd6 Rd2+ 64. Ke7 Winning. (Howell – Stremavicius, 2024, analysis) **PUZZLE 5.** 46. ... Kb3 Black lost after 46. ... a2? 47. Kf6 Rb3 48. Rxa2+! Kxa2 49. e5 when Black’s king is too far. 47. f4 Ra4 48. Rb7+ Kc2 49. Rc7+ Kd1 50. Rd7+ Ke2 51. Rc7 a2 52. Rc1 a1=Q+ 53. Rxa1 Rxa1 54. f5 Ra4 when the king is well-placed. 55. f6 Ke3 Black draws. (Vo – Skvortsova, 2024, analysis) **PUZZLE 6.** 67. ... Kf6! The right square. After 67. ... Kg5? 68. Rb3 Kf4 69. Kc4! Rb7 70. Kc5 White won. 68. Kc4 Rc8+! 69. Kxb4 Now 69. Kd5 Rd8+ 70. Ke4 Re8+ 71. Kd3 Rb8 72. Kc4 Rc8+ holds. 69. ... Ke6! 70. Ra2 Kd5 71. Rd2 Rc4+ 72. Kb3 Rc6 White’s passive pieces are stuck. 73. f4 Rg6 Black draws. (Pham – Movsesian, Budapest, 2024, analysis)