

45TH FIDE OLYMPIAD, PT. 2

WEDNESDAY WORKOUT ■ OCTOBER 09, 2024

BY JJ LANG

PUZZLE 1.



BLACK TO MOVE

PUZZLE 2.



WHITE TO MOVE

PUZZLE 3.



BLACK TO MOVE

PUZZLE 4.



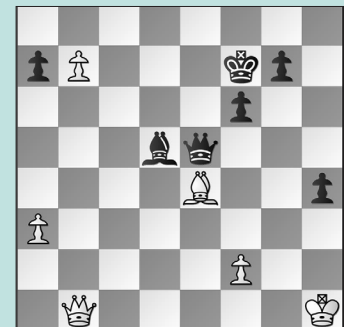
WHITE TO MOVE

PUZZLE 5.



WHITE TO MOVE

PUZZLE 6.



WHITE TO MOVE

SOLUTIONS

PUZZLE 1. Black missed **21. ... Nxd4!** instead opting for **21. ... h4** with a modest edge that he eventually lost. **22. Qxd4 Bf6** Backwards bishop moves are hard to find, even for IMs! (Warmerdam – Risteski, Budapest, 2024) **PUZZLE 2.** White missed a turnaround with **38. Nf6+!** After **38. h4?** White was still worse, but won later. **38. ... gxf6** If **38. ... Qxf6** then **39. Qxc7** won material. **39. Rg4+ Kh7 40. Qxf8** Mate follows. (Pham – Movsesian, Budapest, 2024) **PUZZLE 3.** Black's attack is stalling, putting him in a dangerous position. **25. ... Rxb2+** Instead, the thematic **25. ... f5?** was a misjudgment of Black's prospects, as Black had nothing after **26. Kxb2**

Qxe3! The point! **27. Qxe3 Nxc4+ 28. Kc1 Nxe3** Black has queenside chances. (Rodshtein – Mohammad Fahad, Budapest, 2024) **PUZZLE 4.** The veteran English GM missed a quiet move here. **31. Nc5!** With **31. g4**, White instead had to suffer to hold a draw. **31. ... Bxc5** What else? There is no other way to prevent **Nc5-d**. **32. dxc5 Rxb2 33. Rxc4!!** Simplest, quelling counterplay. White can still win with **33. Qf6!** but had to anticipate **33. ... Nd2** and settle for **34. Bxd2 Qxd2 35. Rf3 Rb7** when only **36. g4!** wins. **33. ... dxc4 34. Qf6** Mate is coming. (Adams – Paichadze, Budapest, 2024) **PUZZLE 5.** **39. Qg6!** An invisible resource! After **39. Qf2? Rxe2 40. Kxe2 Re8+!** Black's attack raged on. **39. ... Qxh4** Or **39. ... Rxe2 40. Qxh6+ Bxh6 41. Kxe2**

held. **40. Rxe7 Qh1+** Black hits the d5-rook, but White's mate threat forces Black to settle. **41. Kf2 Qh4+! 42. Kf1 Qh1+** Draw. (Narva – Lazarne Vajda, Budapest, 2024) **PUZZLE 6.** White has two moves. **40. Bxd5+** Instead, after **40. f3? Bxe4! 41. Qxe4 Qb5! 42. Kg1** Black could have held with **42. ... h3 43. Kh2 f5!**; The other win is: **40. Bg2 Bxg2+ 41. Kxg2 Qd5+** when White must find **42. Kh2** (or **42. f3** when the "proof" takes time) **42. ... h3 43. f3! Qxf3 44. Qa2+** to win. **40. ... Qxd5+ 41. Kh2!** Not **41. Kg1? h3!** when after **42. Qf1 Qxb7**, White has nothing. **41. ... h3** If **41. ... Qe5+ 42. Kg1 Qg5+ 43. Kf1** and the checks run out. **42. f3!! Qd6+** Or **42. ... Qxf3 43. Qa2+** wins. **43. Kxh3** Black's checks run out. (Zhu – Atalik, Budapest, 2024, analysis)