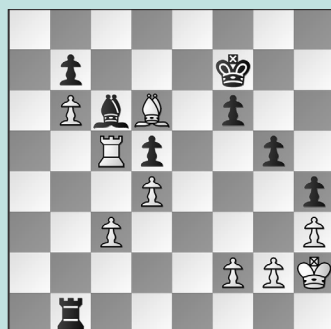


SAINT LOUIS RAPID & BLITZ, PT. 1

WEDNESDAY WORKOUT ■ SEPTEMBER 11, 2024

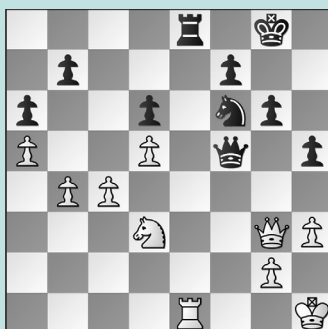
BY JJ LANG

PUZZLE 1.



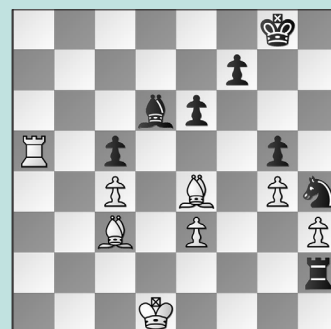
WHITE TO MOVE

PUZZLE 2.



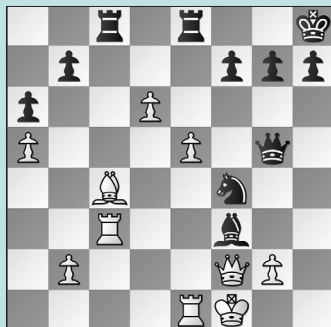
BLACK TO MOVE

PUZZLE 3.



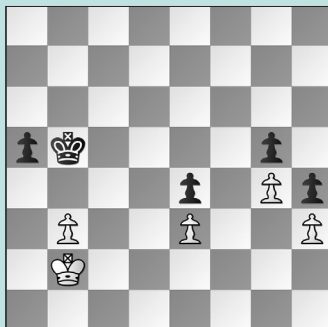
WHITE TO MOVE

PUZZLE 4.



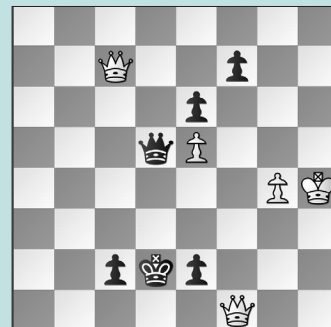
WHITE TO MOVE

PUZZLE 5.



WHITE TO MOVE

PUZZLE 6.



WHITE TO MOVE

SOLUTIONS

PUZZLE 1. 52. **Rxc6** Black's rook is as well-placed as can be to catch the b-pawn, but after 52. ... **bxc6** 53. **Bb4**, it's not enough, and **Black resigned**. (Firouzja – So, St. Louis, 2024) **PUZZLE 2.** 39. ... **Rxe1+** The queenside crumbles now. Instead, after 39. ... **Ne4** 40. **Qe3 h4** 41. **Kg1 Nf6** 42. **Qd4 Rxe1+** 43. **Nxe1 Qb1** 44. **Qxh4 Qxb4** 45. **Nf3**, White was still equal, although he lost later. 40. **Nxe1** Not 40. **Qxe1?? Qxd3** winning. 40. ... **Qf1+** 41. **Kh2 Ne4** Defending the d-pawn before capturing on c4! 42. **Qe3 Qxc4** Black is in prime position now! (Abdusattorov – Firouzja, St. Louis, 2024, analysis) **PUZZLE 3.** 42. **Ra8+ Bf8** 43. **Be5** Gaining a tempo on

Black's rook on the way to attack the f8-bishop. 43. ... **Rxh3** 44. **Bd6** and White went on to win. (Firouzja – Dominguez, St. Louis, 2024) **PUZZLE 4.** 40. **Qxf3!** Instead, after 40. **Rxf3?** **Rxc4** 41. **d7 Rd8**, Black kept the piece, and after 42. **g3 Ne6** 43. **Rxf7 h6**, White had no more attack and thus no compensation to speak of. Even worse would have been 40. **d7?? Bxg2+** 41. **Kg1 Nh3+** 42. **Kh2 Nxf2** 43. **dxe8=Q+ Rxe8**, when Black is up a ton of material. But now, Black has no tricks, and loses after, e.g.: 40. ... **Rxe5** 41. **Rxe5 Qxe5** 42. **d7 Rd8** 43. **Re3** With a safe king, White is winning. (Dominguez – Abdusattorov, St. Louis, 2024, analysis) **PUZZLE 5.** 49. **Ka3!!** Instead, after 49. **Kc2?**, the players immediately agreed to a draw. But now, 49. ... **Kb6**

Or 49. ... **Kc6** 50. **Ka4 Kb6** 51. **b4 axb4** 52. **Kxb4** is no different. In fact, nothing is! 50. **Ka4 Ka6** 51. **b4 axb4** 52. **Kxb4 Kb6** Black keeps opposition, but not the e-pawn, so White wins. (Firouzja – Vachier-Lagrave, St. Louis, 2024, analysis) **PUZZLE 6.** White is up a queen, but Black has two more on the way! The only win was 70. **Qf2** Instead, after 70. **Qxc2+? Kxc2** 71. **Qxe2+**, the players soon agreed to a draw. But, here, the point is that White can allow 70. ... **c1=Q?** Or 70. ... **Kd1** 71. **Qc3** with a nice mating net. But, in this line, after Black promotes, White's queen proves to be well-placed on the f2-square yet again: 71. **Qf4+** White has effectively stopped both of Black's pawns! (Abdusattorov – Caruana, St. Louis, 2024, analysis)