

# TOURNAMENT OF CHAMPIONS, PT. 2

## WEDNESDAY WORKOUT ■ AUGUST 21, 2024

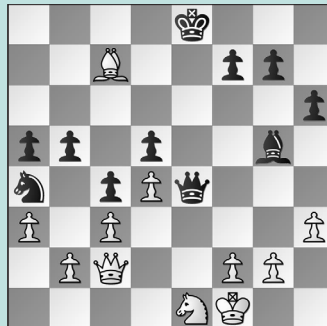
BY JJ LANG

PUZZLE 1.



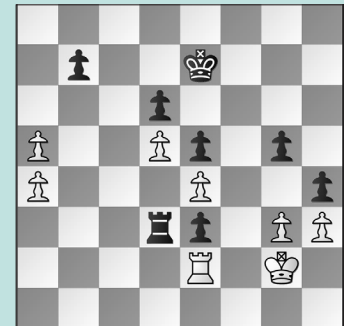
WHITE TO MOVE

PUZZLE 2.



BLACK TO MOVE

PUZZLE 3.



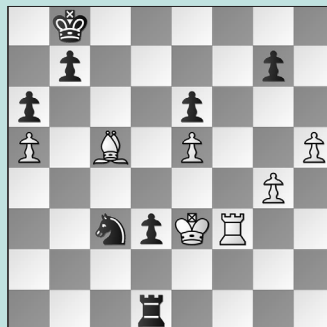
BLACK TO MOVE

PUZZLE 4.



WHITE TO MOVE

PUZZLE 5.



WHITE TO MOVE

PUZZLE 6.



WHITE TO MOVE

### SOLUTIONS

**PUZZLE 1.** 22. Nc4! The threat of Nc4-d6+ is too strong. Black's position collapsed after 22. ... Qe7 23. Qxe7 Nxe7 24. Rb1! White remains up a piece. (Wang – Gu, Norfolk, 2024) **PUZZLE 2.** 30. ... Qxc2! The endgame is winning for Black. Instead, after 30. ... Bd8? 31. Bxd8! Kxd8 32. Qc1, White had equalized, although Black won much later. 31. Nxc2 Black did not want to drop the a5-pawn, but gets two pawns in return. 31. ... Bc1 32. Bxa5 Bxb2 The c3-pawn falls next, as 33. Nb4 hangs the a3-pawn. (Fei – Liu, Norfolk, 2024, analysis) **PUZZLE 3.** 45. ... Rd2! 46. Kf3 g4+ The point, although 46. ... Rxe2 47. Kxe2 g4 also works! 47. Kxe3 Rxe2+

48. Kxe2 gxh3 49. Kf2 h2 50. Kg2 hxg3 White can never capture the g3-pawn, and thus is doomed. 51. a6 bxa6 52. a5 Kf6 and White resigned. (Wang, R. – Wang, T., Norfolk, 2024) **PUZZLE 4.** 30. Rxf6! A bolt out of the blue. 30. ... Rxf6 If 30. ... Kxf6 31. Qh7 is similar. 31. Bc3 d5 32. Bxf6+ Kxf6 33. Qh7 The key point. Black's king is caught in the crossfire. 33. ... Qe2 34. Qxh6+ Kf5 35. g4+ and Black resigned. (Managadze – Burnett, Norfolk, 2024) **PUZZLE 5.** 48. Bd6+ was played in the game, and wins, as does starting with 48. Rf8+ when after 48. ... Kc7 White must play 49. Bd6+! (not 49. Bb6+? Kd7 50. Rd8+ Ke7 51. Rxd3 when 51. ... Nd5+! 52. Kd4 Rg1 keeps the balance) Now, after 49. ... Kd7 50. Rf7+ Kd8 51. Rg7,

we transpose to our main variation. 48. ... Kc8 Now, the way forward was 49. Rf8+ Not 49. Rf2 Nd5+ 50. Kd4 d2 51. Kd3 Rg1 52. Kxd2 Rxd2 with an equal endgame. 49. ... Kd7 50. Rf7+ Kd8 51. Rxd7 winning after 51. ... d2 52. Bb4 catching the pawn. (Liu – Rao, Norfolk, 2024, analysis) **PUZZLE 6.** 27. Qxd5! White lost after 27. Qh3+ Nd7 28. Bf4 Qf6 29. Nxd8 Qxd7 30. Qxd5 g5 31. Qh5 Rxh8 32. Qf3 Qf6 33. Qxd5 Qxf4+ with mate to follow. 27. ... Qf6+ Or: 27. ... Rxf7+ 28. Rxf7 Nxf7 29. Qxf7 is just equal; 27. ... Qa6+ 28. Kg1! Nxf7 29. Rxf7 is no different. 28. Kg2 Nxf7 This allows a draw, but 28. ... Qxg7? 29. Qa8+ Kd7 30. Qa7+ loses, as the queen hangs. 29. Qa8+ Kc7 30. Qa7+ White is equal. (Willy – Rao, Norfolk, 2024, analysis)