

TOURNAMENT OF CHAMPIONS

WEDNESDAY WORKOUT ■ AUGUST 14, 2024

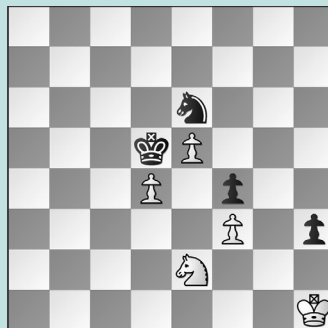
BY JJ LANG

PUZZLE 1.



WHITE TO MOVE

PUZZLE 2.



WHITE TO MOVE

PUZZLE 3.



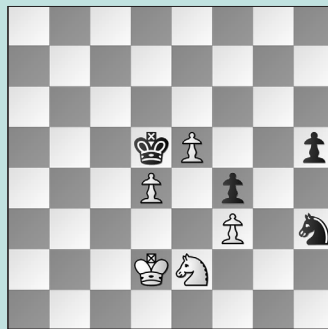
WHITE TO MOVE

PUZZLE 4.



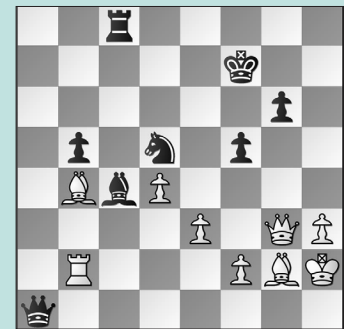
WHITE TO MOVE

PUZZLE 5.



WHITE TO MOVE

PUZZLE 6.



WHITE TO MOVE

SOLUTIONS

PUZZLE 1. 15. g5! Black has too many weaknesses. **15. ... hxg5** In the game, Black lost after **15. ... Ke7 16. Ne4 hxg5 17. fxg5** winning the piece. But taking on g5 lost after **16. Qxe6+!** But not 16. fxg5?? as 16. ... Bxg5+ comes with check! **16. ... Kf8** and now **17. Bc4** wins. (Huston – Rutten, Norfolk, 2024) **PUZZLE 2. 72. Kh2 Zugzwang!** **72. ... Ng5 73. Nxf4+ Kxd4 74. e6 Nxe6 75. Nxe6+ Ke3 76. Nd4** A cute finish. White won after 17 more moves. 76. f4 was also winning, but, importantly, 76. Ng5?? Kf4 was not. (Tang – Liu, Norfolk, 2024) **PUZZLE 3. 28. Qg2** An important nuance. In the game, **28. Qd5?** allowed **28. ... Rxc4+ 29. Kh1 Rd8 30. Rxa6** with a small edge

only. **28. ... Rae8** If 28. ... Qc6 29. Bd3 was the point; or 28. ... Rxc4 wins the bishop but 29. Qxa8+ wins more. **29. d7! R8e5 30. Rxa6 Qd8 31. Nd6** winning. (Dana – Zapata, Norfolk, 2024, analysis) **PUZZLE 4. 32. Rxc5!** The winning attack, with a hard-to-find point at the end. Instead, after **32. Qc5**, the players shook hands. **32. ... hxg5 33. f6** Or 33. Qxc5 f6 34. Qg6+ Kh8 35. Qh6+ Kg8 also wins, if White finds 36. Be2! repositioning the bishop! **33. ... Rg8 34. Nd5** Running interference to prepare Bf3-e4+, while also hammering the loose a7-rook. Black can resign. (Nguyen – Mokeeva, Norfolk, 2024, analysis) **PUZZLE 5. 56. Nc3+** An incredibly counterintuitive move! After the “normal” **56. Ke1 Ng5 57. Kf2 Ne6**, Black had

reclaimed a draw, although White won later (see Puzzle 2). **56. ... Kxd4 57. e6!** The point. Black’s knight can’t catch the e-pawn! (Tang – Liu, Norfolk, 2024, analysis) **PUZZLE 6. 47. Qd6!!** The only win. Instead, **47. Qe5 Qxb2 48. Bxd5+ Bxd5 49. Qxd5+ Kg7 50. Qd7+ Kh6** and the players shook hands. **47. ... Qxb2 48. Bxd5+ Bxd5 49. Qd7+!** The important difference with the queen on the d6-square instead of the e5-square. **49. ... Kg8** Black must surrender the rook with check. **50. Qxc8+ Kg7 51. Qf8+ Kh7 52. Qe7+ Kh6** Or 52. ... Kg8 53. Qd8+ wins the bishop, as there is no ... Bd5-f7 or ... Bd5-g8 to interpose, so 53. ... Kh7 54. Qxd5 Qxb4 55. Qf7+ wins. **53. Qh4+ Kg7 54. Bd6** winning. (Liu – Paragua, Norfolk, 2024, analysis)