

# PAN-AMERICAN YOUTH, PT. 2

## WEDNESDAY WORKOUT ■ AUGUST 07, 2024

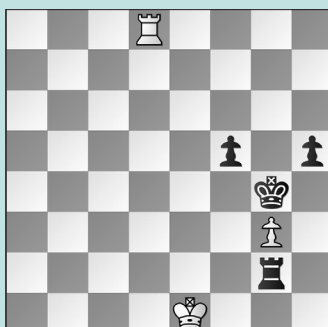
BY JJ LANG

### PUZZLE 1.



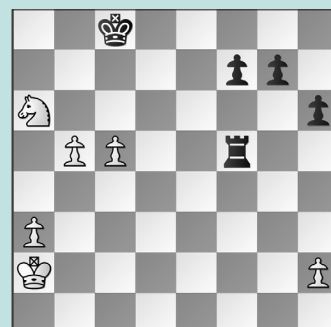
BLACK TO MOVE

### PUZZLE 2.



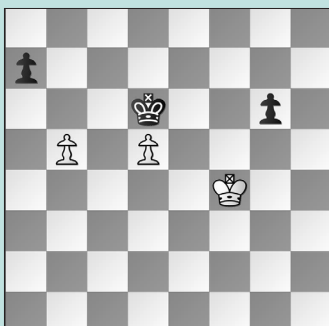
BLACK TO MOVE

### PUZZLE 3.



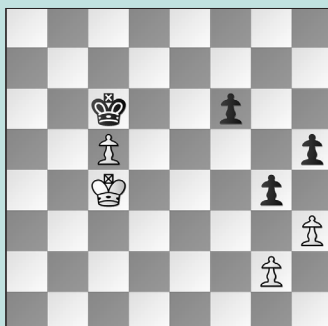
WHITE TO MOVE

### PUZZLE 4.



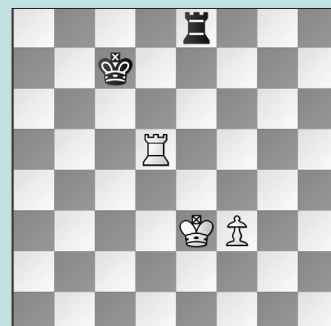
WHITE TO MOVE

### PUZZLE 5.



WHITE TO MOVE

### PUZZLE 6.



WHITE TO MOVE

## SOLUTIONS

**PUZZLE 1.** 85. ... Kd6! Black's king is just close enough!  
86. Rc8 Rg1 Simplest, although the g2- and g3-squares also work. But Black ignored the principle of "checking distance" with 86. ... Rg5?? 87. Kb7 and resigned in light of 87. ... Rb5+ 88. Ka6 with tempo on the loose rook.  
87. Kb7 Rb1+ 88. Ka6 Ra1+ 89. Kb6 Rb1+ is the point. (Zhu – Lou, Orlando, 2024, analysis) **PUZZLE 2.** 68. ... Kxg3! The proper capture. In the game, Black erred with 68. ... Rxg3?? 69. Kf2! It will be much harder to advance the f-pawn now: 69. ... Ra3 70. Rg8+ Kf4 when White can still draw, but only with 71. Kg2!, not 71. Rh8?? Ra2+ when Black won. Now 71. ... Ra2+ 72. Kh3 and

White draws by staying active. 69. Rg8+ Kf3! 70. Rh8 f4 The most illustrative win. 71. Rxh5 Rg1+ 72. Kd2 Kf2 with a Lucena position to follow. (Tang – Reyes, Orlando, 2024, analysis) **PUZZLE 3.** 35. a4! An unusual imbalance! 35. ... Re5 Cutting off the king with 35. ... Rf3 allows 36. c6 Rc3 37. Nb4 Rc4 38. Kb3 while; Or, 35. ... Rf4 lets the king through: 36. Kb3 with b5-b6 and c5-c6 to follow. 36. c6 Re6 37. Nb4 f5 38. b6 and White is winning. (Zhou – Deshpande, Orlando, 2024) **PUZZLE 4.** 59. Ke4! g5 60. Kd4 Or 60. Kf5 also draws: 60. ... Kxd5 61. Kxg5 Kc5 62. Kf4! since 62. ... Kxb5 63. Ke3 and there's no box-out! 60. ... g4 61. Ke4 Kc5 62. Kf4 Kxb5 63. Kxg4 a5 64. Kf5 a4 65. d6 with a draw. (De Fassio – Jasinski, Orlando,

2024) **PUZZLE 5.** 57. hxg4! White erred with 57. h4?? f5 58. Kd4 f4 59. Ke4 when Black missed a miracle save with 59. ... f3!, instead playing 59. ... Kxc5?? 60. Kxf4 and White won. 57. ... hxg4 58. Kd4 g3 59. Kc4! Zugzwang! 59. ... Kc7 60. Kd5 Kd7 61. c6+ Kc7 62. Kc5! (Li – Zhang, Orlando, 2024, analysis) **PUZZLE 6.** 58. Kf2!! White played 58. Kd3? when, e.g., 58. ... Kc6 holds since 59. Kd4 Rf8 60. Ke4 Rxf3 draws. Instead, after 58. ... Rf8?? 59. Ke4 Re8+, White wins with 60. Re5, but played 60. Kf4? yet won later. 58. ... Kc6 59. Rd3! Kc5 Covering with 59. ... Rf8 allows 60. Kg3 Rg8+ 61. Kh4 Rh8+ 62. Kg5 Rg8+ 63. Kf5 Rf8+ 64. Ke6 as 64. ... Rf4 65. Ke5 wins. 60. f4! Finally, a theoretical win. (Karthi – Khanbutaev, Orlando, 2024, analysis)