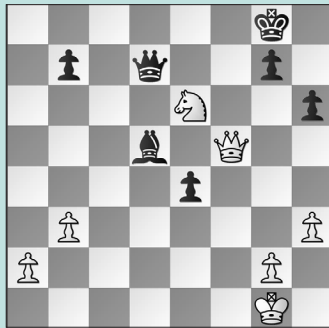


# FIDE WORLD CUP JUNIOR PLAYOFFS

## WEDNESDAY WORKOUT ■ JULY 17, 2024

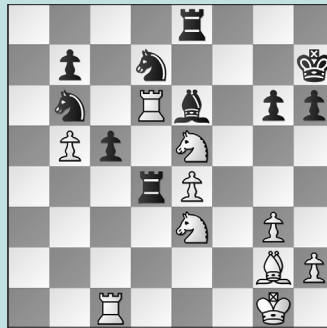
BY JJ LANG

PUZZLE 1.



WHITE TO MOVE

PUZZLE 2.



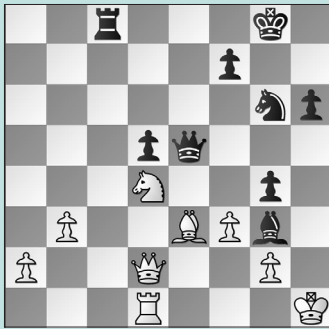
WHITE TO MOVE

PUZZLE 3.



WHITE TO MOVE

PUZZLE 4.



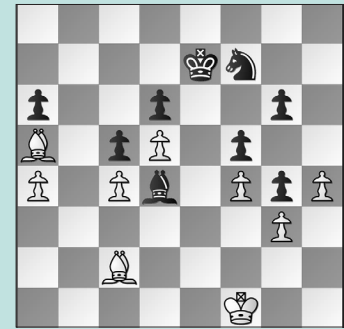
WHITE TO MOVE

PUZZLE 5.



WHITE TO MOVE

PUZZLE 6.



WHITE TO MOVE

### SOLUTIONS

**PUZZLE 1. 35. Nxe7!** White nets a key pawn and should win the endgame if the queens trade. Instead, **35. Qf8+ Kh7 36. Qf5+** led to a draw by repetition. (Xin – Kinzyabulatova, Batumi, 2024, analysis) **PUZZLE 2. 31. Nd5!** A lovely overload. **31. ... Nxe5** The alternatives still lose: **31. ... Kg8 32. Rxb6** allows Nd5-f6+, as in the game; **While 31. ... Nxd5 32. Nxd7** saves the knight, after **32. ... Bxd7 33. Rxd7+ Ne7 34. Rxc5**, White is winning. **32. Nf6+ Kh8 33. Nxe8 Rxd6 34. Nxd6** and White went on to win. (Wang – Lenin, Batumi, 2024) **PUZZLE 3. 21. Nh6+!** In the game, White still won after **21. Nxe7+ Rxe7??** Note that **21. ... Bxe7!** was much better. Here, White won with

**22. e5. 21. ... gxf6 22. Qxf6** Black is hopeless against Be3xh6. (Xia – Macosay Lopez, Batumi, 2024, analysis) **PUZZLE 4. 40. fxg4!** Necessary, and winning, defense. In the game, White lost after **40. Bf2?? Qh5+ 41. Kg1 Qh2+ 42. Kf1 Qh1+ 43. Bg1 Bh2 44. Qe3 Nf4!** is likely what White overlooked. **40. ... h5** Attempting to regain access to the h-file. **41. Nf5! hxg4 42. Qxd5** and White is better. (Yu – Shangin, Batumi, 2024, analysis) **PUZZLE 5. 36. Reb1!** Unstoppable, due to Black's uncoordinated pieces. **36. ... Nxb2** While **36. ... Ka8** avoids mate, it hangs the knight **37. Bxd3** as the rook is safe on b1. **37. Qxb2 Re7 38. Qb6+ Ka8 39. Qxa6+ Ra7 40. Qxc8** mate. (Xia – Chen, Batumi, 2024, variation) **PUZZLE 6. 39. h5!** Black's

last move allowed one final pawn lever to bust open the position for White's bishop pair. Instead, **39. Bb6 Nd8 40. a5** petered out to a draw. **39. ... gxh5 40. Bxf5** Black is powerless to stop Bf5-c8. **40. ... Nh6** Black's most resilient try. The idea is to meet Bc8xa6 with ... Nh6-f5. **41. Bc8 Be3 42. Ke2** White should still be better after **42. Bxa6?** but now Black has **42. ... Nf5!** **43. Kg2 Bc1 44. Bb5 Ne3+ 45. Kg1 Bb2** with some counterplay. **42. ... Bc1 43. Kf2 h4 44. gxh4 Bxf4 45. Kg2** White must still guard against tricks with ... Nh6-f5+, as **45. Bxa6?? Nf5 46. Bc8 g3+ 47. Kg1 Nxh4 48. Bh3!** is the only way to hold a draw. **45. ... Ke8 46. Be1** Having guarded the h4-pawn, the a6-pawn falls. (Ling – Bolashakov, Batumi, 2024, analysis)